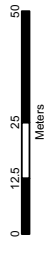




## Sugarloaf Pipeline Project Extent of Planting Sites around Hunt's Lane

- Planting Site
- Construction ROW
- Property Boundary



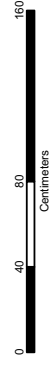
DO NOT SCALE

This document incorporates data which is:  
 © Commonwealth of Australia (Geoscience Australia) 2005  
 © Commonwealth of Australia (Geoscience Australia) 2005  
 have not evaluated the data as incorporated into this document, and therefore give no warranty regarding its accuracy, completeness, currency or suitability for any particular purpose.  
 Department of Sustainability and Environment, 2010.  
 The information in this document is provided as a guide only. It is not intended to be used as a substitute for professional advice. The user of this document is responsible for ensuring that the information is used in a way that is appropriate for the purpose and to whom it is intended to be provided. The user of this document is responsible for ensuring that the information is used in a way that is appropriate for the purpose and to whom it is intended to be provided. The user of this document is responsible for ensuring that the information is used in a way that is appropriate for the purpose and to whom it is intended to be provided.



## Sugarloaf Pipeline Project Hunt's Lane North Site

- Matted Flax-Lily Plant
- Construction ROW
- Property Boundary



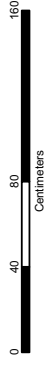
DO NOT SCALE

This document incorporates data which is:  
 © Commonwealth of Australia (Geoscience Australia) 2005  
 has not been evaluated for accuracy or reliability for any particular purpose.  
 The Department of Environment, Land, Water & Planning and Melbourne Water do not warrant the accuracy or reliability of the information contained in this document.  
 The Department of Sustainability and Environment, 2006.  
 The Department of Environment, Land, Water & Planning, The State of Victoria  
 and its employees do not guarantee that the material used in this publication is without error of any kind or is wholly  
 appropriate for the purpose and it is not liable for any error or for any consequences which may arise  
 from its use. (1/11/2010 10:04:24 AM) (1/11/2010)



## Sugarloaf Pipeline Project Hunt's Lane South Site

- Matted Flax-Lily Plant
- Construction ROW
- Property Boundary



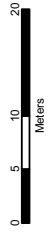
DO NOT SCALE

This document incorporates data which is:  
 © Commonwealth of Australia (Geoscience Australia, 2005)  
 © Commonwealth of Australia (Geoscience Australia, 2005)  
 have not evaluated the data as incorporated into this document, and therefore give no warranty regarding its accuracy, completeness, currency or suitability for any particular purpose.  
 Department of Sustainability and Environment, 2010.  
 and its employees do not guarantee that the material used in this publication is without error of any kind or is wholly accurate for the purpose and in relation to the information contained therein for any year, time or consequences which may arise from its use.



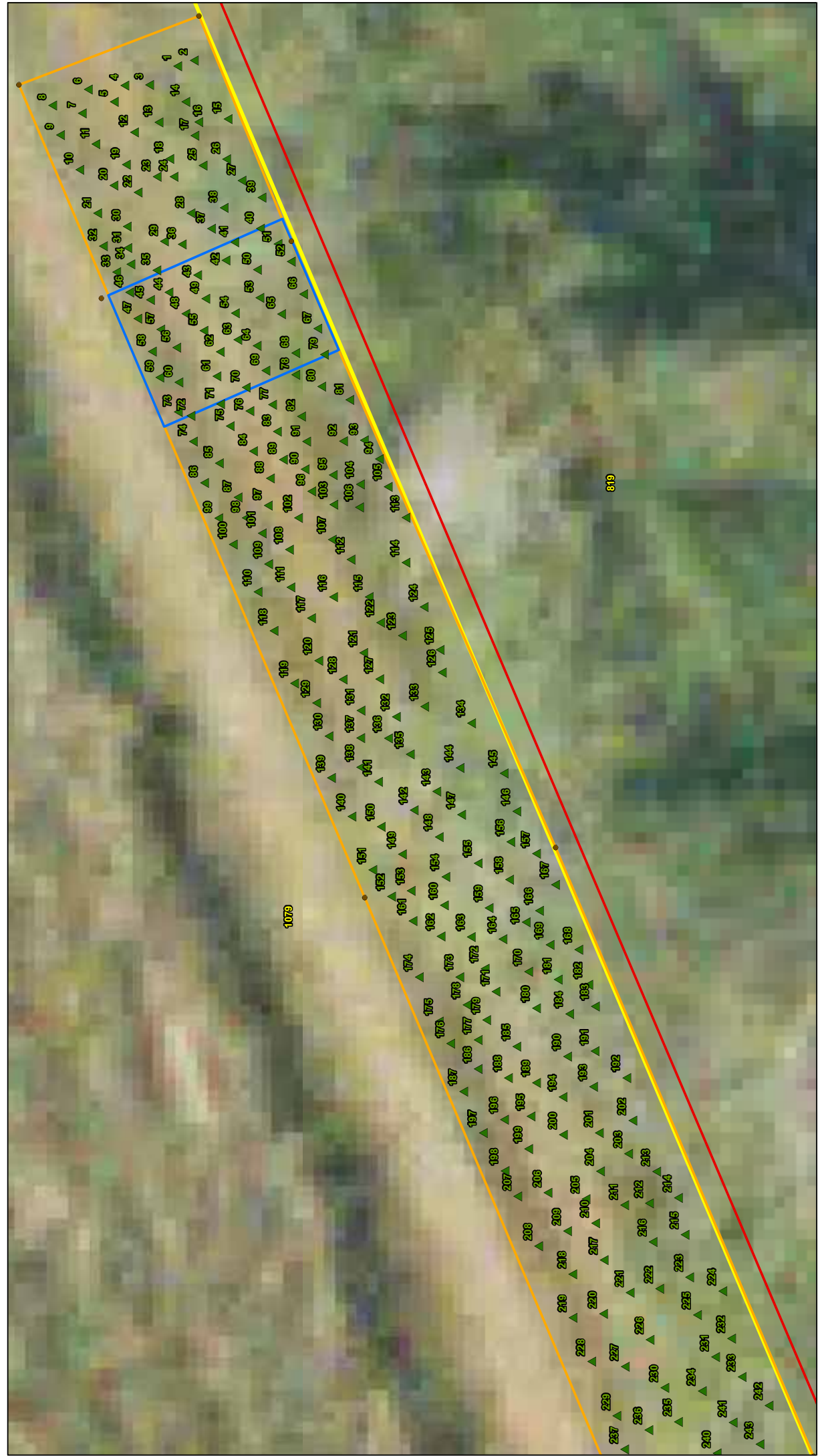
### Sugarloaf Pipeline Project Matted Flax-Lily Translocation Site

- Fence Post
- ▭ Matted Flax-Lily Translocation Site
- ▭ Matted Flax-Lily Quadrat Site
- ▭ Construction ROW
- ▭ Property Boundary



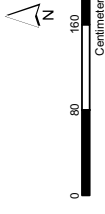
DO NOT SCALE

This document incorporates data which is:  
 © Commonwealth of Australia (Geoscience Australia) 2005  
 has not evaluated the data as incorporated into this document, and therefore gives no warranty regarding its accuracy, completeness, currency or suitability for any particular purpose.  
 Department of Sustainability and Environment, 2010.  
 The Department of Sustainability and Environment, its officers, employees, contractors, consultants, agents and the employees do not warrant or guarantee that the material used in this publication is without error of any kind or is free from errors or omissions and it is not liable for any errors or omissions or for any consequences which may arise from the use of the material.



**Sugarloaf Pipeline Project**  
**Matted Flax-Lily Planting Sites - Map 1**

- Fence Post
- ▲ Matted Flax-Lily Plant
- Matted Flax-Lily Translocation Site
- Matted Flax-Lily Quadrat Site
- Construction ROW
- Property Boundary



**DO NOT SCALE**

This document incorporates data which is:  
 © Commonwealth of Australia (Government of Queensland) 2006  
 has not been checked for accuracy and is provided as a service to the public. It is not intended to be used as a substitute for professional advice.  
 Copyright Material - Review Only - Not for Redistribution  
 Department of Sustainability and Environment, 2006.  
 and the employees into 100 years from the date of publication of this document. The State of Victoria  
 shall not be liable for any loss or damage, including consequential or special damages, arising from  
 any use of the information contained in this material.



**Sugarloaf Pipeline Project**  
**Matted Flax-Lily Planting Sites - Map 2**

- Fence Post
- ▲ Matted Flax-Lily Plant
- Matted Flax-Lily Translocation Site
- Matted Flax-Lily Quadrat Site
- ▭ Construction ROW
- ▭ Property Boundary



0 80 160 320  
 Centimeters

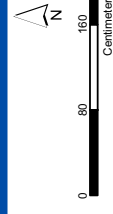
**DO NOT SCALE**

This document incorporates data which is:  
 © Commonwealth of Australia (Government of Australia) 2006  
 © Commonwealth of Australia (Government of Victoria) 2006  
 This document is a reproduction of the data as incorporated within this document, and therefore gives no warranty regarding its  
 accuracy or completeness for any particular purpose.  
 Copyright Material - Review Only - Not for Redistribution  
 Department of Sustainability and Environment, 2006.  
 The State of Victoria and its employees (including its contractors) do not warrant the accuracy or reliability of any information contained in this material, or any errors, false or misleading information which may arise from reliance on any such information contained in this material.



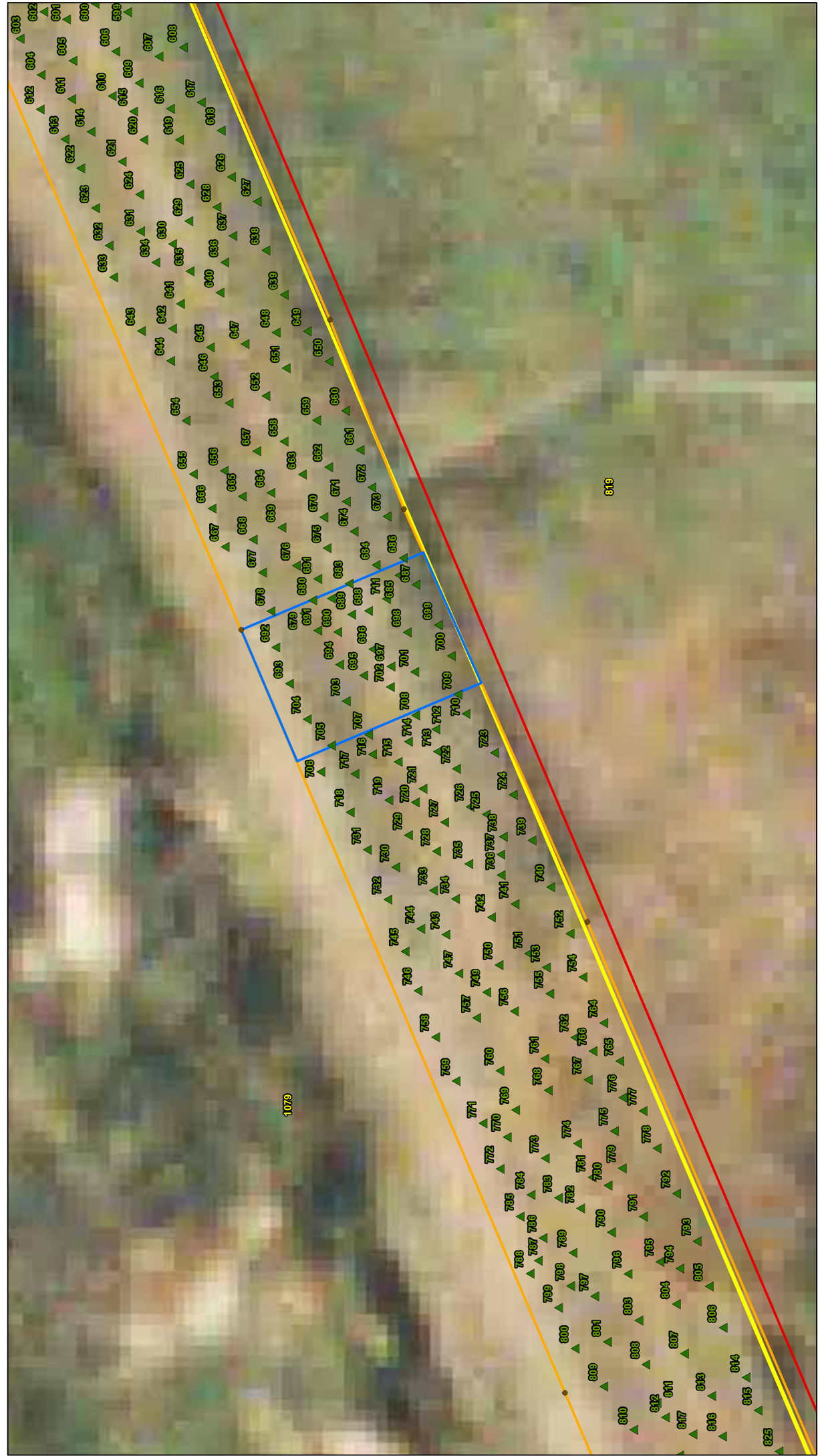
**Sugarloaf Pipeline Project**  
**Matted Flax-Lily Planting Sites - Map 3**

- Fence Post
- ▲ Matted Flax-Lily Plant
- ▭ Matted Flax-Lily Translocation Site
- ▭ Matted Flax-Lily Quadrat Site
- ▭ Construction ROW
- ▭ Property Boundary



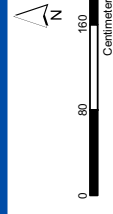
**DO NOT SCALE**

This document incorporates data which is:  
 © Commonwealth of Australia (Government of Queensland) 2006  
 has not been verified by the Department of Sustainability and Environment of Queensland Australia. Government of Queensland  
 has not verified the data as incorporated within this document, and therefore gives no warranty regarding its  
 accuracy or completeness for any particular purpose.  
 Copyright Material - Review Only - Not for Redistribution  
 Copyright Material - Review Only - Not for Redistribution  
 Department of Sustainability and Environment, 2006.  
 and the employees into 60 years from the date of publication of this document. The State of Victoria  
 shall not be liable for any error, loss or consequences which may arise  
 from reliance on any information contained in this material.



### Sugarloaf Pipeline Project Matted Flax-Lily Planting Sites - Map 4

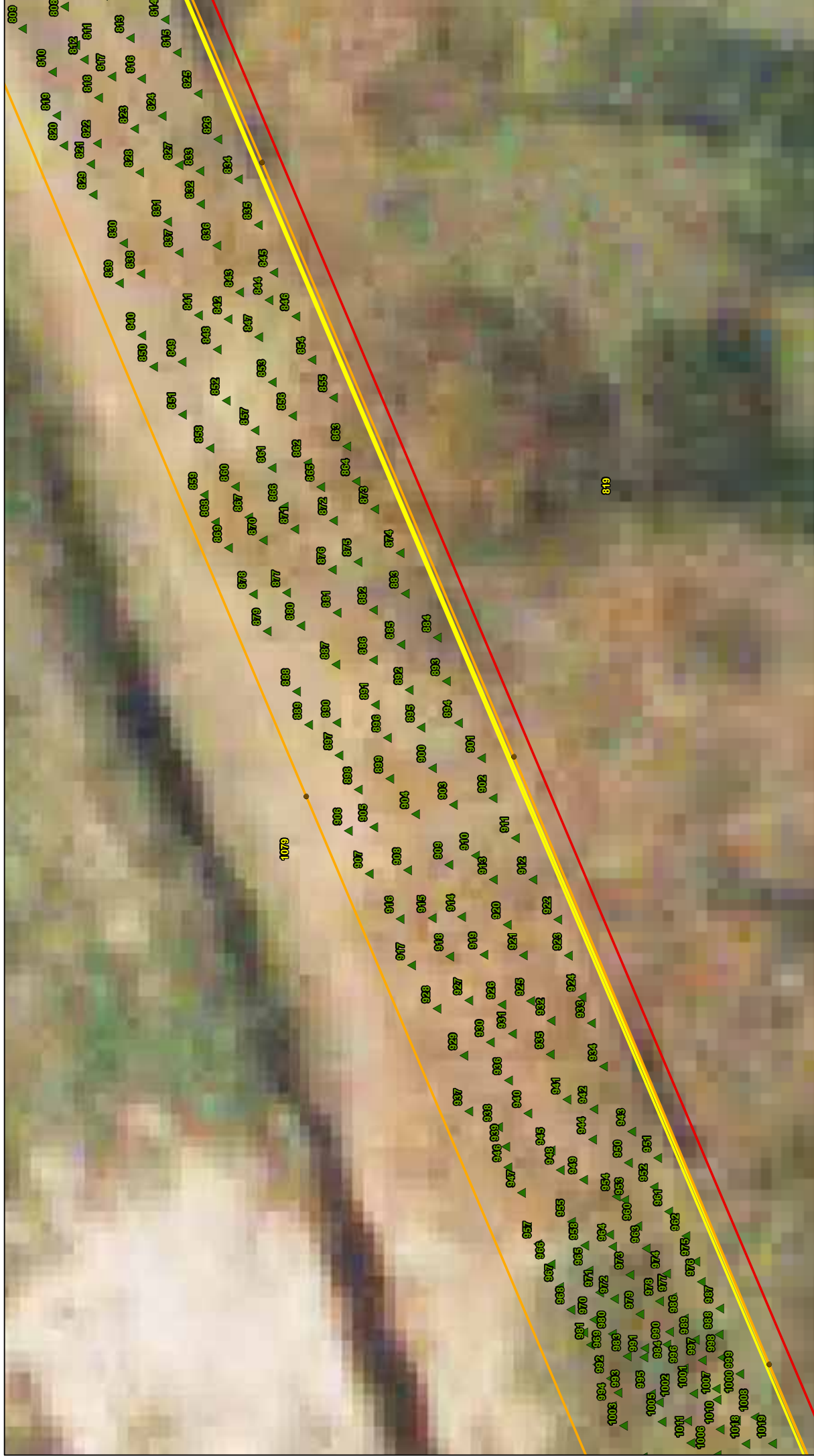
- Fence Post
- ▲ Matted Flax-Lily Plant
- Matted Flax-Lily Translocation Site
- Matted Flax-Lily Quadrat Site
- Construction ROW
- Property Boundary



**DO NOT SCALE**

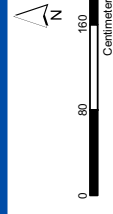
This document incorporates data which is:  
 © Commonwealth of Australia (Government of Queensland) 2006  
 has not been updated since its incorporation into this document, and therefore gives no warranty regarding its  
 accuracy or reliability for any particular purpose.  
 Copyright Material - Review Only - Not for Redistribution  
 Department of Sustainability and Environment, 2006.  
 and the employees into 60 years from the date of publication of this publication without leave of any kind or in writing  
 from the copyright owner. This document is made available for any other use or correspondence which may arise  
 from reference to any information contained in this material.





**Sugarloaf Pipeline Project**  
**Matted Flax-Lily Planting Sites - Map 5**

- Fence Post
- ▲ Matted Flax-Lily Plant
- Matted Flax-Lily Translocation Site
- Matted Flax-Lily Quadrat Site
- Construction ROW
- Property Boundary



**DO NOT SCALE**

This document incorporates data which is:  
 © Commonwealth of Australia Government/Australian 2006  
 has not been revised or updated since its publication. The Commonwealth of Australia does not warrant the data as incorporated within this document, and therefore gives no warranty regarding its accuracy or reliability for any particular purpose.  
 Copyright Material - Review Only - Not for Redistribution  
 Department of Sustainability and Environment, 2006.  
 and the employees into 100 years and that the material used in this publication is without flow of any kind or in whole or in part, in any form or by any means, electronic, mechanical, photocopying, recording, or by any information storage and retrieval system, without the prior written permission of the copyright owner.



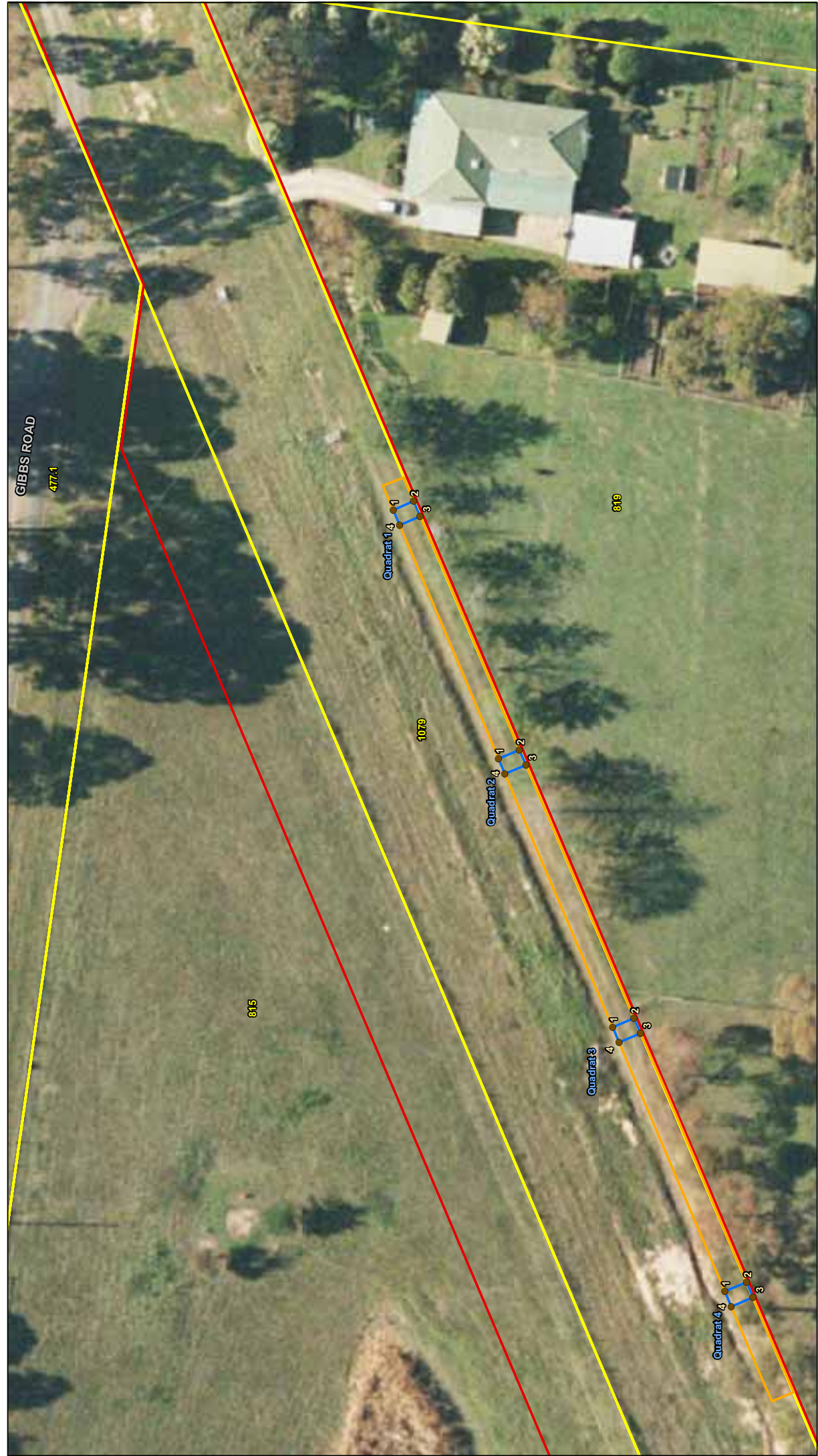
### Sugarloaf Pipeline Project Matted Flax-Lily Planting Sites - Map 6

- Fence Post
- ▲ Matted Flax-Lily Plant
- Matted Flax-Lily Translocation Site
- Matted Flax-Lily Quadrat Site
- ▭ Construction ROW
- ▭ Property Boundary



This document incorporates data which is:  
 © Commonwealth of Australia (Government of Australia) 2006  
 has not been revised or updated since its publication and is provided as a reference only.  
 The data is incorporated within this document, and therefore given no warranty regarding its  
 content or accuracy. It is the user's responsibility to verify the data for any particular purpose.  
 Copyright Melbourne Water 2010  
 Department of Sustainability and Environment, 2006.  
 The State of Victoria  
 and its employees shall not be liable for any error, loss or consequences which may arise  
 from reliance on any information contained in this material.

Date Created: May 17, 2010



GIBBS ROAD  
477.1

815

Quadrat 1

1079

Quadrat 2

Quadrat 3

Quadrat 4

819

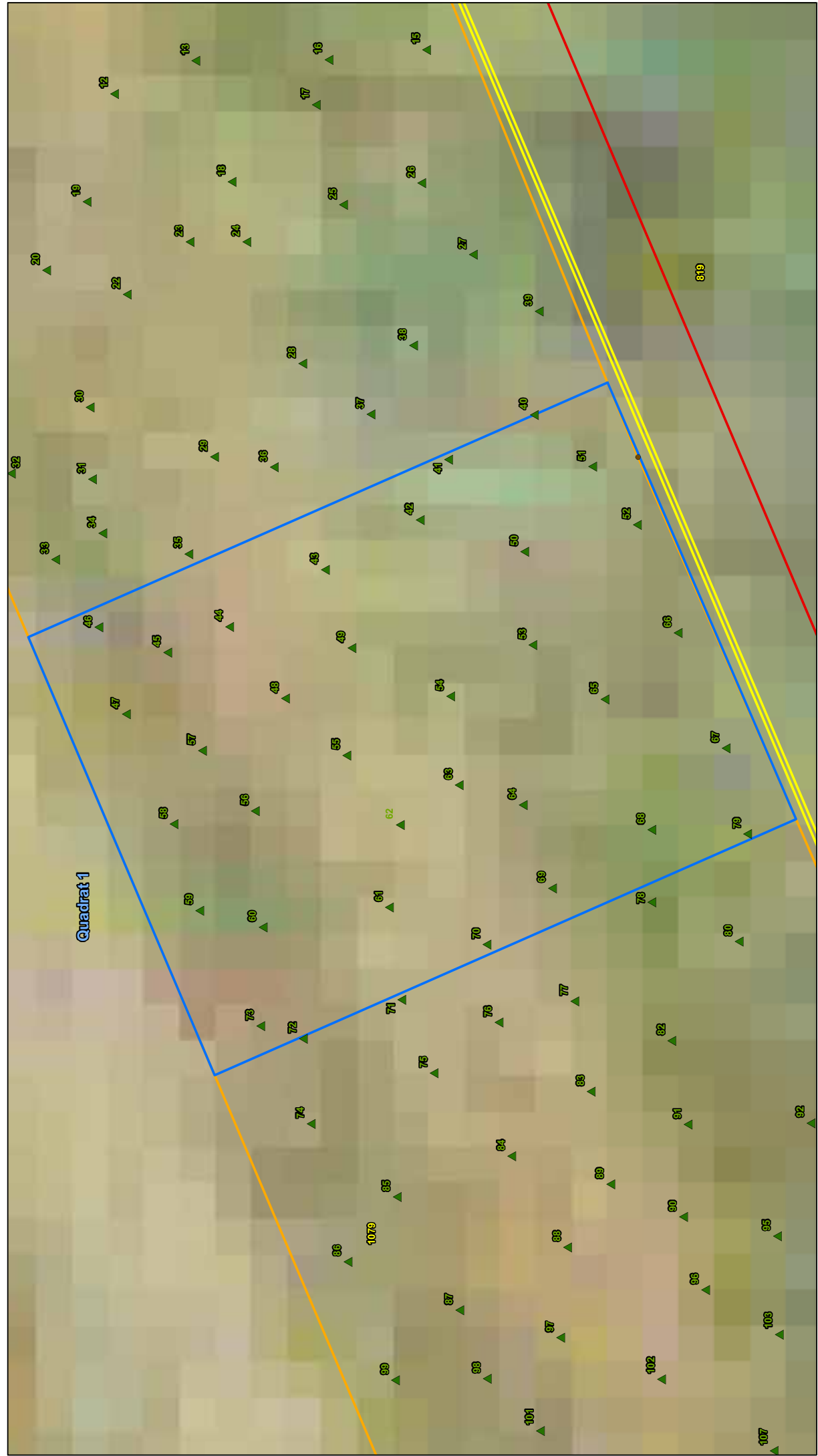
### Sugarloaf Pipeline Project Matted Flax-Lily Quadrat Co-Ordinates

- Quadrat Numbers
- ▭ Matted Flax-Lily Translocation Site
- ▭ Matted Flax-Lily Quadrat Site
- ▭ Construction ROW
- ▭ Property Boundary

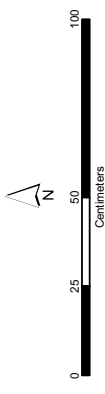


**DO NOT SCALE**

This document incorporates data which is:  
 © Commonwealth of Australia (Government of Queensland) 2005  
 Government of Queensland (Government of Queensland) 2005  
 have not evaluated the data as incorporated into this document, and therefore give no warranty regarding its accuracy, completeness, currency or suitability for any particular purpose.  
 Department of Sustainability and Environment, 2006.  
 and the employees do not warrant the accuracy of the information contained in this document or its suitability for any particular purpose.  
 and the employees do not warrant the accuracy of the information contained in this document or its suitability for any particular purpose.



Quadrat 1



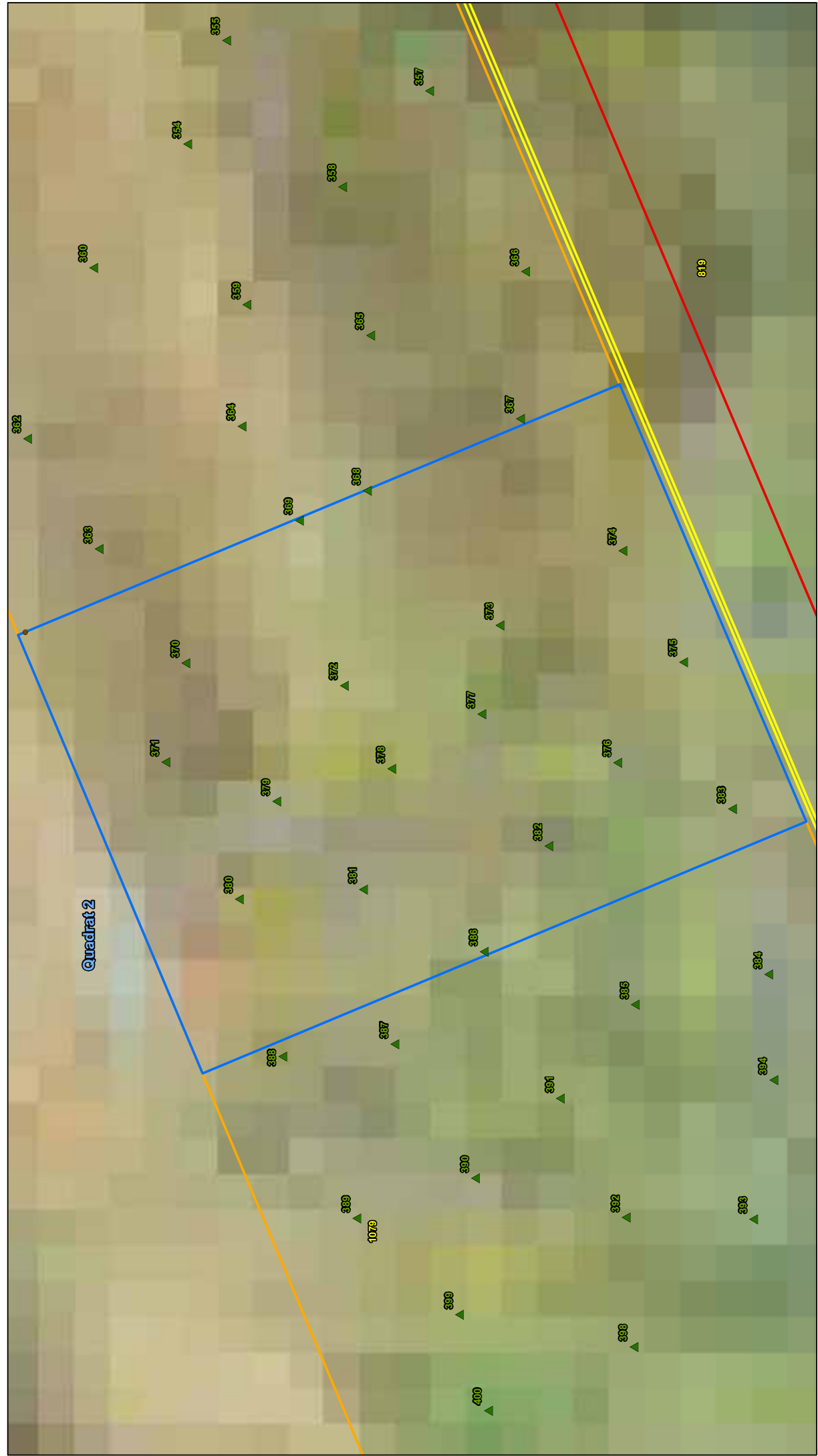
**DO NOT SCALE**



**Sugarloaf Pipeline Project**  
**Matted Flax-Lily Quadrat Sites - Quadrat 1**

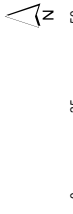
- Fence Post
- ▲ Matted Flax-Lily Plant
- ▭ Matted Flax-Lily Translocation Site
- ▭ Matted Flax-Lily Quadrat Site
- ▭ Construction ROW
- ▭ Property Boundary

This document incorporates data which is:  
 © Commonwealth of Australia (Government of Queensland) 2006  
 This document is a reproduction of the information contained in the original document. Queensland Government has not evaluated the data as incorporated within this document, and therefore gives no warranty regarding its accuracy or completeness.  
 Queensland Government is not liable for any errors or omissions in this document, or for any consequences which may arise from reliance on any information contained in this document.  
 Queensland Government is not liable for any errors or omissions in this document, or for any consequences which may arise from reliance on any information contained in this document.



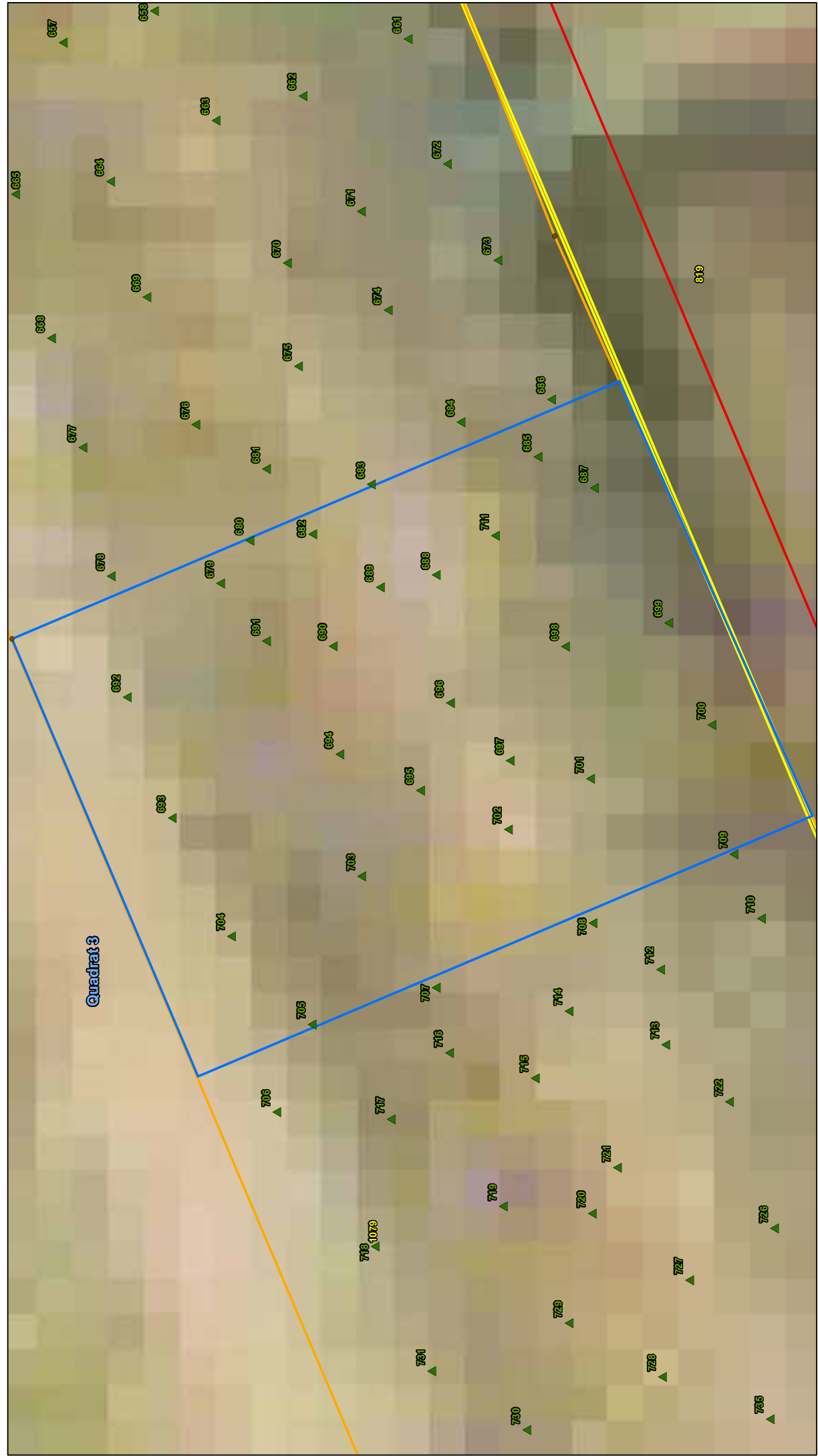
### Sugarloaf Pipeline Project Matted Flax-Lily Quadrat Sites - Quadrat 2

- Fence Post
- ▲ Matted Flax-Lily Plant
- ▭ Matted Flax-Lily Translocation Site
- ▭ Matted Flax-Lily Quadrat Site
- ▭ Construction ROW
- ▭ Property Boundary



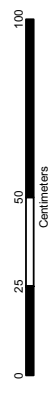
DO NOT SCALE

This document incorporates data which is:  
 © Commonwealth of Australia (Government of Queensland) 2006  
 has not been reviewed for accuracy or completeness by the Commonwealth of Queensland. Queensland Government  
 has not reviewed the data as incorporated within this document, and therefore gives no warranty regarding its  
 accuracy or completeness.  
 Copyright Material - Review Only - Not for Redistribution  
 Queensland Government © The State of Queensland 2016  
 Department of Sustainability and Environment, 2016.  
 This document is the property of the Commonwealth of Queensland. The State of Queensland  
 and its employees into 60 years from the date of publication of this document without the prior written  
 consent of the Commonwealth of Queensland. This document is not to be used for any other use or purposes which may arise  
 from the information contained in this document.



### Sugarloaf Pipeline Project Matted Flax-Lily Quadrat Sites - Quadrat 3

- Fence Post
- ▲ Matted Flax-Lily Plant
- ▭ Matted Flax-Lily Translocation Site
- ▭ Matted Flax-Lily Quadrat Site
- ▭ Construction ROW
- ▭ Property Boundary



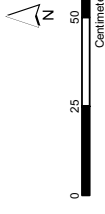
**DO NOT SCALE**

This document incorporates data which is:  
 © Commonwealth of Australia (Government Australia) 2006  
 © Commonwealth of Australia (Government Australia) 2006  
 This document is to be used in accordance with the terms of the License Agreement for the use of the data as incorporated within this document, and therefore gives no warranty regarding its  
 accuracy or completeness. It is the user's responsibility to ensure that the data is used for any particular purpose.  
 Copyright Material - Review Only - Not for Redistribution  
 Department of Sustainability and Environment, 2006.  
 This document is to be used in accordance with the terms of the License Agreement for the use of the data as incorporated within this document, and therefore gives no warranty regarding its  
 accuracy or completeness. It is the user's responsibility to ensure that the data is used for any particular purpose.  
 Copyright Material - Review Only - Not for Redistribution  
 Department of Sustainability and Environment, 2006.  
 This document is to be used in accordance with the terms of the License Agreement for the use of the data as incorporated within this document, and therefore gives no warranty regarding its  
 accuracy or completeness. It is the user's responsibility to ensure that the data is used for any particular purpose.  
 Copyright Material - Review Only - Not for Redistribution  
 Department of Sustainability and Environment, 2006.



### Sugarloaf Pipeline Project Matted Flax-Lily Quadrat Sites - Quadrat 4

- Fence Post
- ▲ Matted Flax-Lily Plant
- Matted Flax-Lily Translocation Site
- Matted Flax-Lily Quadrat Site
- Construction ROW
- Property Boundary



DO NOT SCALE

This document incorporates data which is:  
 © Commonwealth of Australia (Government of Queensland) 2006  
 In the absence of any other information, the data is incorporated into this document, and therefore given no warranty regarding its  
 accuracy or completeness.  
 Copyright Material - Review Only - Not for Redistribution  
 Department of Sustainability and Environment, 2006.  
 The information contained in this document is for reference only and is not intended to be used for any other purpose or for any other site or correspondence which may arise  
 from reference to any information contained in this document.