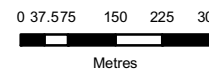


Sugarloaf Pipeline Project
Striped Legless Lizard Capture Locations



- Legend**
- | | |
|---------------|------------------|
| Status | Construction ROW |
| Dead | Easement |
| Live, Injured | Property |
| Live | |
| Tail | |

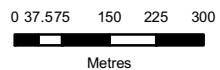
Note: Locations of captured SLL were recorded using a hand-held GPS unit (accuracy +/- 15m) and based on the proposed alignment at time of assessment. Where multiple SLL caught at same location, points have been slightly offset to display all.

The layer named "Property Boundary" contains property boundaries that have been modified firstly to match surveyed fences and then modified to interpreted fence boundaries based on the latest imagery. Property boundaries are based on "occupation", i.e. fences and imagery and are not to be adopted as "TITLE BOUNDARIES". Where appropriate property boundaries contained within this file may be modified as a result of further surveying of fences.

This document incorporates data which is:
 © Commonwealth of Australia (Geoscience Australia) 2006
 Topographic data has been used in this document with the permission of Geoscience Australia. Geoscience Australia has not evaluated the Data as incorporated within this document, and therefore gives no warranty regarding its accuracy, completeness, currency or suitability for any particular purpose.
 Contains Vicmap information © The State of Victoria, Department of Sustainability and Environment, 2006. Reproduced by permission of the Department of Sustainability and Environment. Disclaimer: The State of Victoria and its employees do not guarantee that the material used in this publication is without flaw of any kind or is wholly appropriate for the purpose and therefore disclaim all liability for any error, loss or consequences which may arise from reliance upon any information contained in this material.

Sugarloaf Pipeline Project

Striped Legless Lizard Capture Locations

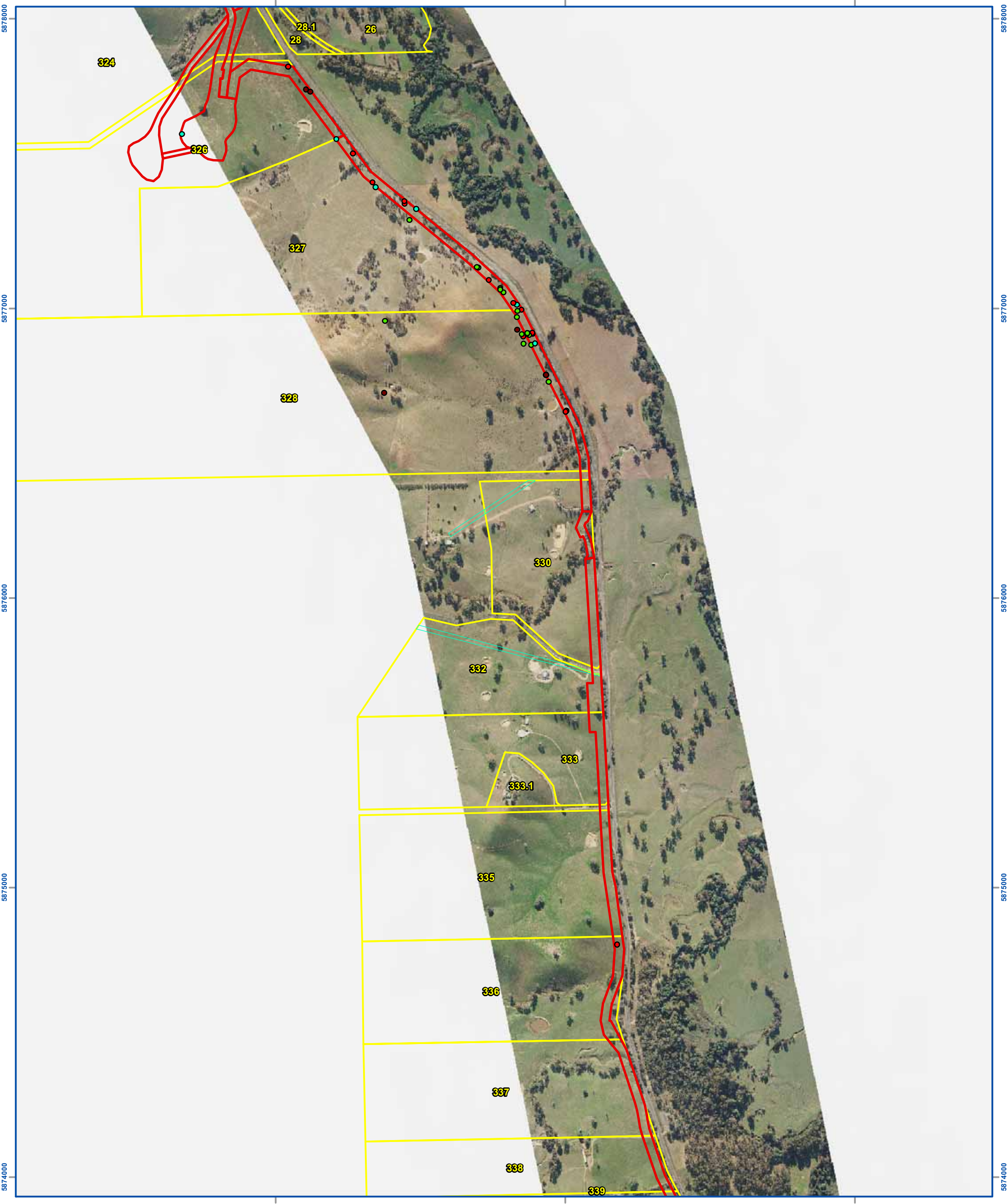


- Legend**
- Status**
- Dead
 - Live, Injured
 - Live
 - Tail
- Construction ROW
 Easement
 Property

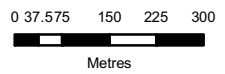
Note: Locations of captured SLL were recorded using a hand-held GPS unit (accuracy +/- 15m) and based on the proposed alignment at time of assessment. Where multiple SLL caught at same location, points have been slightly offset to display all.

The layer named "Property Boundary" contains property boundaries that have been modified firstly to match surveyed fences and then modified to interpreted fence boundaries based on the latest imagery. Property boundaries are based on "occupation", i.e. fences and imagery and are not to be adopted as "TITLE BOUNDARIES". Where appropriate property boundaries contained within this file may be modified as a result of further surveying of fences.

This document incorporates data which is:
© Commonwealth of Australia (Geoscience Australia) 2006
Topographic data has been used in this document with the permission of Geoscience Australia. Geoscience Australia has not evaluated the Data as incorporated within this document, and therefore gives no warranty regarding its accuracy, completeness, currency or suitability for any particular purpose.
Contains Vicmap information © The State of Victoria, Department of Sustainability and Environment, 2006. Reproduced by permission of the Department of Sustainability and Environment. Disclaimer: The State of Victoria and its employees do not guarantee that the material used in this publication is without flaw of any kind or is wholly appropriate for the purpose and therefore disclaim all liability for any error, loss or consequences which may arise from reliance upon any information contained in this material.



Sugarloaf Pipeline Project
Striped Legless Lizard Capture Locations



- Legend**
- | | |
|---------------|------------------|
| Status | Construction ROW |
| Dead | Easement |
| Live, Injured | Property |
| Live | |
| Tail | |

Note: Locations of captured SLL were recorded using a hand-held GPS unit (accuracy +/- 15m) and based on the proposed alignment at time of assessment. Where multiple SLL caught at same location, points have been slightly offset to display all.

The layer named "Property Boundary" contains property boundaries that have been modified firstly to match surveyed fences and then modified to interpreted fence boundaries based on the latest imagery. Property boundaries are based on "occupation", i.e. fences and imagery and are not to be adopted as "TITLE BOUNDARIES". Where appropriate property boundaries contained within this file may be modified as a result of further surveying of fences.

This document incorporates data which is:
 © Commonwealth of Australia (Geoscience Australia) 2006
 Topographic data has been used in this document with the permission of Geoscience Australia. Geoscience Australia has not evaluated the Data as incorporated within this document, and therefore gives no warranty regarding its accuracy, completeness, currency or suitability for any particular purpose.
 Contains Vicmap information © The State of Victoria, Department of Sustainability and Environment, 2006. Reproduced by permission of the Department of Sustainability and Environment. Disclaimer: The State of Victoria and its employees do not guarantee that the material used in this publication is without flaw of any kind or is wholly appropriate for the purpose and therefore disclaim all liability for any error, loss or consequences which may arise from reliance upon any information contained in this material.