



Community Bulletin

Ferny Creek Waterway Improvement works

16 October 2015

Site Closure: Tue 20 October 2015

Melbourne Water will undertake weed removal and revegetation works to improve the amenity of Ferny Creek, Upper Ferntree Gully.

The 1 day closure is to allow for Planting works.

What do the works involve?

Over the next three and a half years, Melbourne Water will be working to improve the health of Ferny Creek and the adjacent vegetation which provides habitat to the local wildlife. The project will remove key weed species, including Boneseed, Sweet Pittosporum, Blackberry and Montpelier Broom and revegetate with locally sourced indigenous plants.

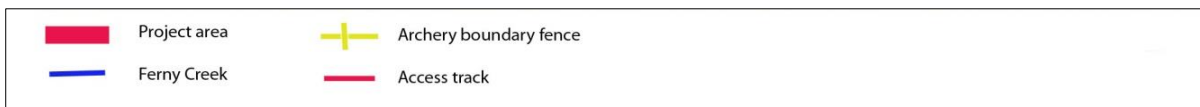
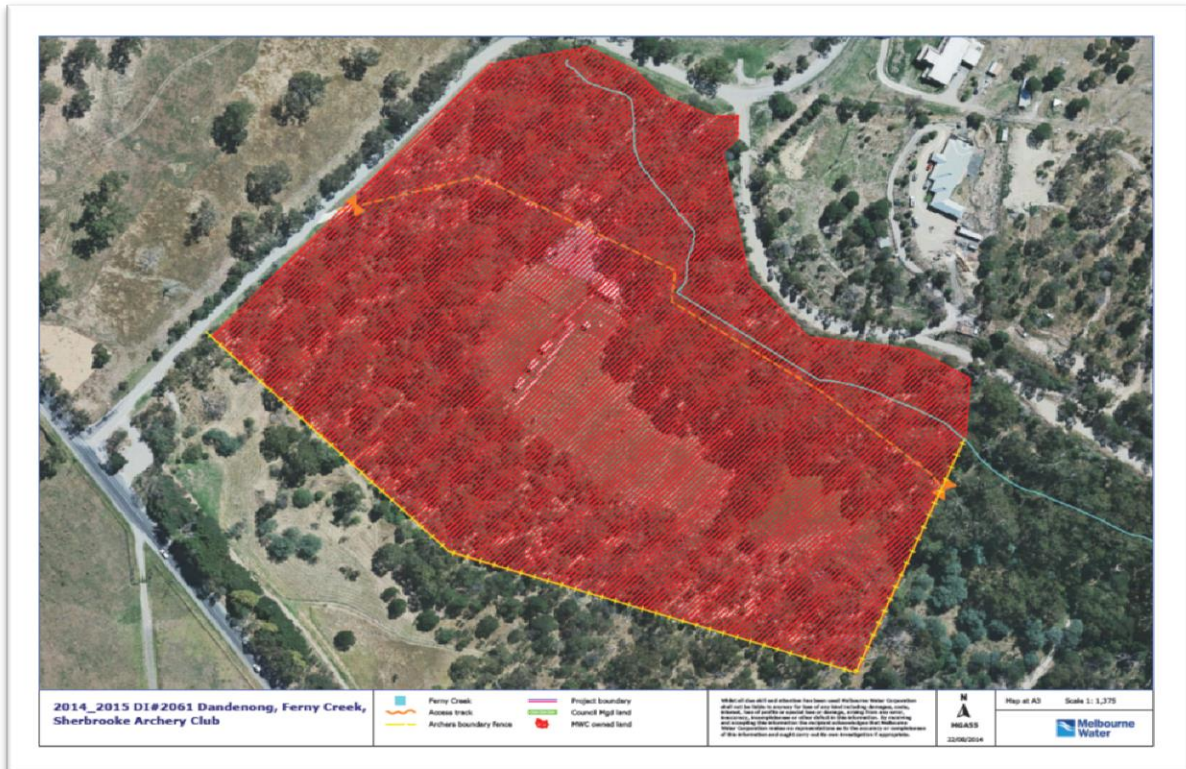
Melbourne Water will work closely with the Sherbrooke Archery Club which uses and manages much of this land and the Shire of Yarra Ranges to plan these works on a site that is an important fauna habitat. The project site connected to the Glenfern Valley Bushlands forms part of an isolated remnant of native vegetation bounded by residential subdivision and pasture and Melbourne Water will work with the Friends of Glenfern Valley Bushlands to ensure the ongoing biodiversity of the area.

How will this affect me?

In order to carry out these works, we will need to be onsite at various times throughout the three and a half years. While we are onsite we have agreed with the Sherbrooke Archery Club that the range will be closed for safety. When this occurs, advanced notification will be sent out to all members and signage will be placed all across the range and on the targets.

Generally, we will only close the range for a few days at a time but during the initial major weed control we will need to be onsite for a longer period of time. The more intensive works will run across the next year, with a maintenance period running for two years to ensure the new vegetation gets the best opportunity to establish. We apologise for the inconvenience and will continue to work with the Sherbrooke Archery Club to minimise the disruption, particularly at any key times of the year for archery.

Location of works



How are these works funded?

These works are funded by the Waterways and Drainage Charge collected through Melburnians' water bills. We work to deliver river health projects efficiently and responsibly.

For more information on these works please call 131 722 quoting Sherbrooke Archery Club. For information about other projects to enhance life and liveability please call 131 722 or visit melbournewater.com.au.

