



February  
2016

## Drought Response Plan: Part B A Water Sharing Plan for Licenced Water Users in the: **Hoddles Creek catchment**

To be read in conjunction with Part A: A Water Sharing Plan for all Licensed Water Users 2016

### 1. Catchment Description

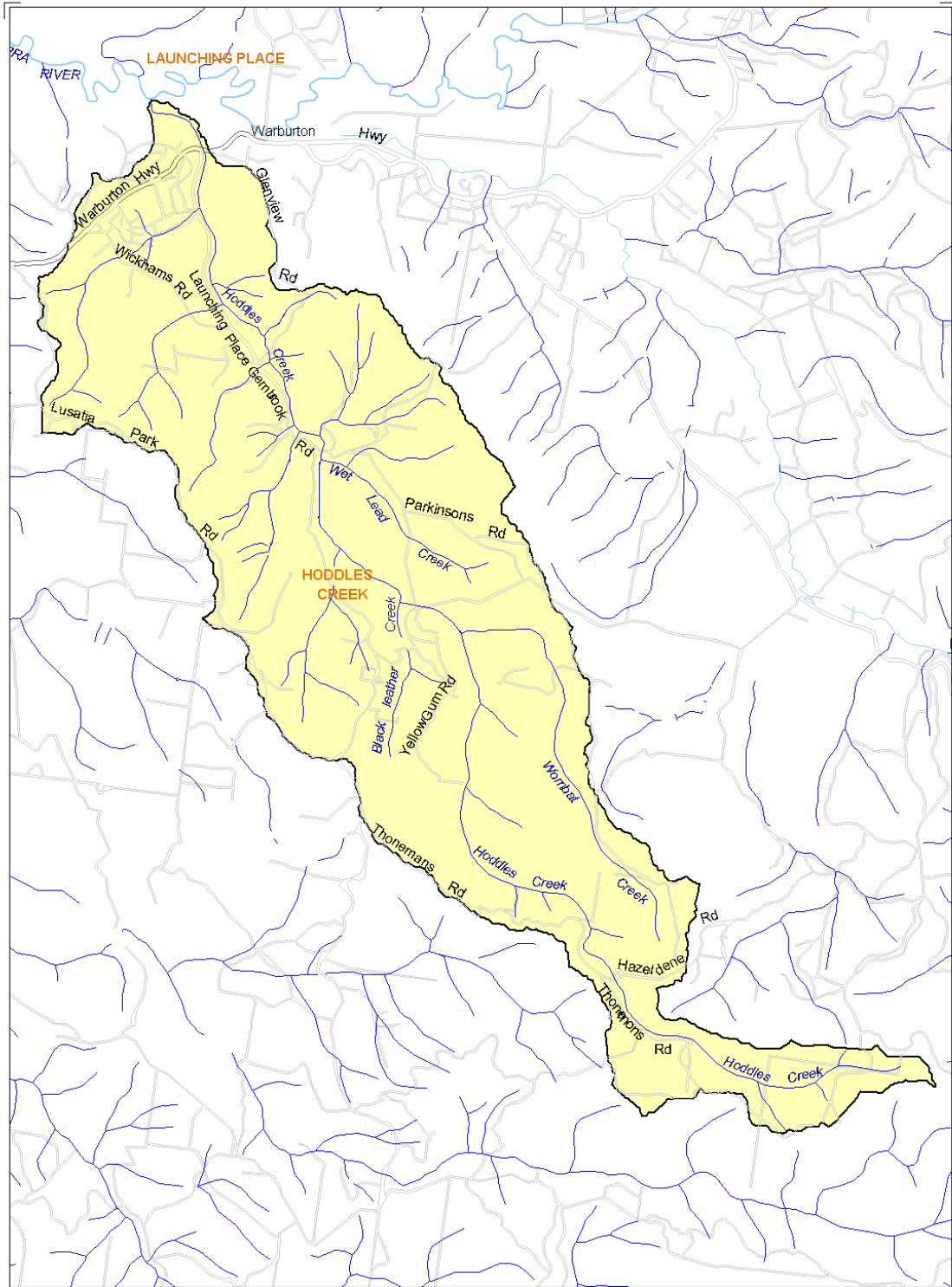
Hoddles Creek, a tributary of the upper Yarra River, is located on the north-western slopes of the Yarra ranges. The Protection Area includes Hoddles Creek and three main tributaries, Blackleather, Wombat and Wet Lead Creeks and the land that drains into these waterways. The Protection Area drains an area of 34 km<sup>2</sup> and is comprised of remnant eucalypt forest, cleared grazing land and areas of intensive horticulture.

Hoddles Creek rises on the southern side of Sale Hill and flows in a north-westerly direction past the townships of Hoddles Creek and Launching Place to its confluence with the Yarra River.

The Hoddles Creek catchment is subject to a Stream Flow Management Plan which commenced in 2003. Further information on the establishment of ban and restriction levels for this catchment can be found within the plan.

The map on the following page shows the catchments and major waterways.





Hoddle Creek catchment

## 2. Ban Triggers

Flow levels are monitored by gauges (data logging stations) that provide continuous flow readings. The data logging station for Hoddles Creek is located at [Launching Place \(229224\)](#). The trigger levels for the Hoddles Creek catchment are as shown in the following table:

Period	Dates	Ban Trigger (ML)
Low Flow	1 Dec - 31 May	5
High Flow	1 Jun - 31 Oct	10.0
Shoulder	1 Nov- 30 Nov	6.9

Bans are implemented or lifted when a catchment-specific trigger has been met, based upon the seven day rolling average stream flow.



*Typical Apple Orchard*

### 3. Application of Plan

Irrespective of anything in this section, users must not exceed their annual allocation on their licence or take water outside of their authorised take period.

Active licence holders in the Hoddles Creek with allocations greater than 5ML are metered by Melbourne Water.



*Hoddles Creek at downstream end*

### Document Versions

Revision	Date Issued	Issued To	Issued By
Version 1	2016	Melbourne Water Diversion Customers	Melbourne Water Diversion Team