

Community Bulletin

Maribyrnong River Main (MRM) Sewer Upgrade

February 2019

Upcoming Maribyrnong River Trail Closure

Melbourne Water is upgrading 7.2 kilometres of the Maribyrnong River Main (MRM) sewer that runs through Avondale Heights, Essendon West and Aberfeldie. This work will be undertaken in stages and will be completed by mid-2020.

What is happening?

On Monday **18 February 2019**, stage 3 of the Maribyrnong River Main Sewer Upgrade will commence between **Thomson Street Reserve and Rhonda Street** (Avondale Heights). Over the coming weeks, the Project will be setting up temporary access tracks to install bypass pumping pipes and setting up areas for storing materials and machinery.

The Maribyrnong River Trail will be intermittently closed in multiple sections to allow for safe transport of material and machinery.

Works involved

- Delivery of black pipes for the temporary installation of above ground sewer bypass pipelines.
- Creating access tracks on various locations along the sewer alignment to allow vehicles and machinery to safely and efficiently get to the manholes to undertake the works.
- Setting up a small site compound and lay down area where pipes will be temporarily stored and welded together.

What to expect

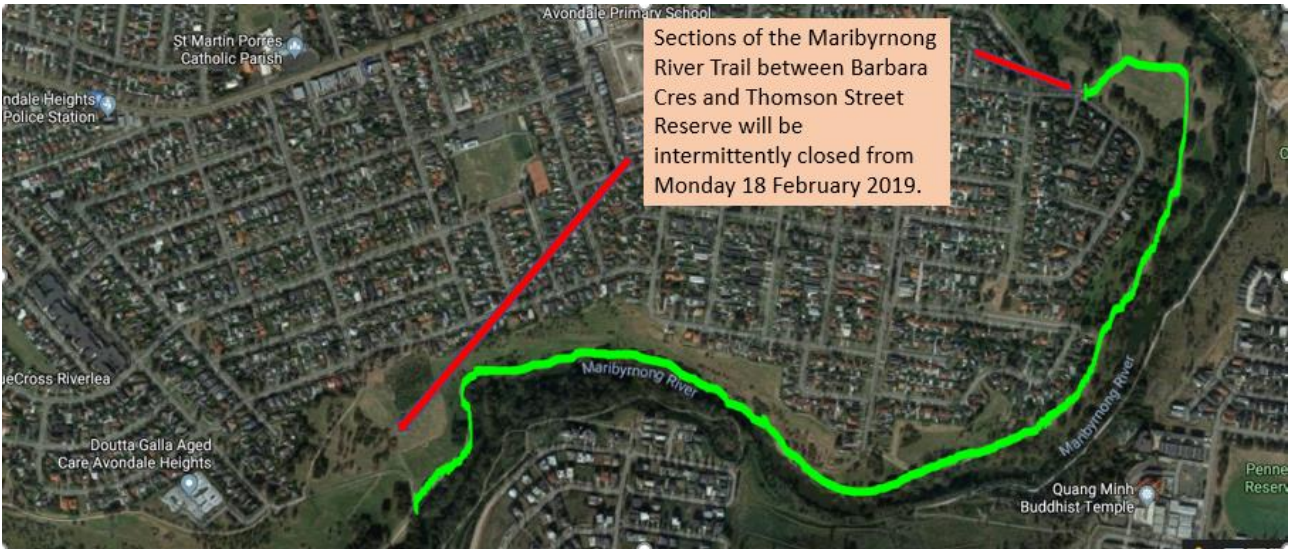
- Temporary closure of sections of the Maribyrnong River Trail. Detour arrangements, signage and traffic controllers will be in place to assist and ensure cyclists and pedestrians are able to safely navigate around our work areas.
- Trucks and other construction vehicle movements in the area.
- Some noise and dust from the movement of trucks and machinery.

Timing

Works will take place between **7am and 6pm, Monday to Friday**, and **7am to 5pm on Saturdays**. These works are expected to be completed within approximately **3 Weeks** weather permitting.

Melbourne Water thanks the community for their patience while we undertake these essential works.

Map: Overview of the segment of the Maribyrnong River Trail affected by the sewer works



Keep up to date with what's happening

T: 1800 027 517

E: MRM@melbournewater.com.au

W: www.melbournewater.com.au/MRM



Interpreter

For an interpreter, please call the Translating and Interpreting Service (TIS National) on 13 14 50



Like us

facebook.com/melbournewater



Follow us

@MelbourneWater



Visit us

www.melbournewater.com.au