

Community Bulletin

Maribyrnong River Main (MRM) Sewer Upgrade

February 2019

Site Preparation activities for upcoming sewer upgrade works, Avondale Heights and Essendon West

Melbourne Water is upgrading 7.2 kilometres of the Maribyrnong River Main (MRM) sewer that runs through Avondale Heights, Essendon West and Aberfeldie. This work will be undertaken in stages and will be completed by mid-2020.

What is happening?

From mid-February works will commence in Essendon West and Avondale Heights. A number of access points may be used to enter and exit the area during the works. You may notice light vehicles in the following local streets: **Prospect Street, Lily Street, Afton Street, Steele Creek Reserve** and on the **Maribyrnong River Trail** between Steele Creek Reserve and Smiley Crescent Reserve (see map Overleaf).

The works will involve:

- Delivery and installation of lengths of black pipe for the temporary above-ground sewer bypass pipeline.
- Creating access tracks in various locations along the sewer alignment to allow vehicles and machinery to safely and efficiently access the manholes to undertake the works.
- Setting up a small site compound or lay down area where pipes will be temporarily stored and welded together.
- Multiple activities along the sewer alignment including cleaning, relining and grouting.

The sewer bypass pipeline will be installed to allow local sewerage services to continue operating at all times while we undertake works on the sewer.

Timing

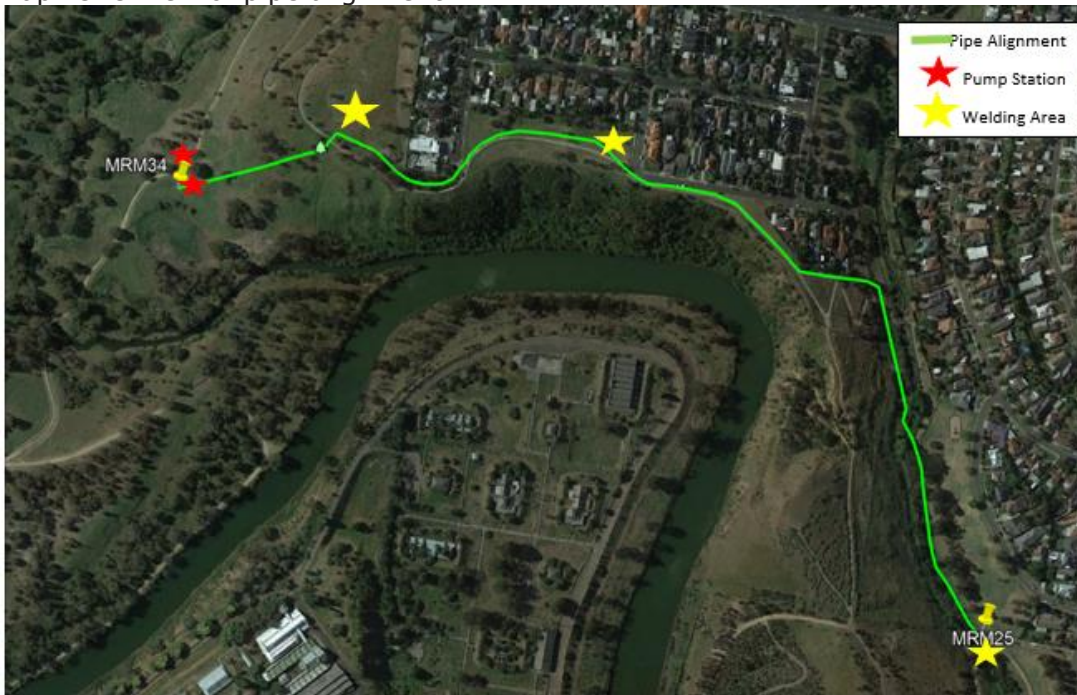
These works will take place from mid- February 2019 for approximately four months.

Crews may be undertaking activities in a number of areas at once.

Works will take place between 7am and 6pm Monday to Friday, and 7am and 3.30pm Saturdays. Residents and businesses will be advised in advance if works are necessary outside of these hours.

Melbourne Water thanks the community for their patience while we undertake these essential works.

Map: Overview of pipe alignment



What to expect

Whilst we will make every effort to ensure inconveniences are kept to a minimum, we do anticipate that there will be some localised impacts including:

- Arrival of work crews, machinery and equipment in the area.
- Noise from trucks and other vehicles, machinery, reversing beepers and generators to power pumps and other equipment.
- Temporary road closures and temporary closures of the Maribyrnong River Trail.
- Some dust and vibration and changes to the speed limits near work areas.
- Tree Trimming and removal of some vegetation

Keep up to date with what's happening

T: 1800 027 517

E: MRM@melbournewater.com.au

W: www.melbournewater.com.au/MRM



Interpreter

For an interpreter, please call the Translating and Interpreting Service (TIS National) on 13 14 50



Like us

facebook.com/melbournewater



Follow us

@MelbourneWater



Visit us

www.melbournewater.com.au