

- DSCM Legend**
- DSS Boundary
 - DS Strategy Boundary
 - DSCM Property
 - Stage (Allocated)
 - Stage (Works in Progress)
 - Stage (Finalised)
 - Nodes
 - Bio-Retention Swale
 - Channel
 - Cleanout works
 - Culvert
 - Grassed Swale
 - Low flow pipe with Channel
 - Overland flow path
 - Pipeline
 - Soft Engineering
 - Bio-Retention Basin
 - Buffer Strip
 - Inlet/Outlet Structure
 - Junction Pit
 - Litter trap
 - Retarding Basin
 - Sediment trap
 - Wetland

- As Constructed Legend**
- Channel
 - Natural Waterway
 - Sewer Main
 - Underground Drain
 - Water Main
 - Flood Extents
 - Lake
 - Retarding Basin
 - Sediment Trap
 - Wetland

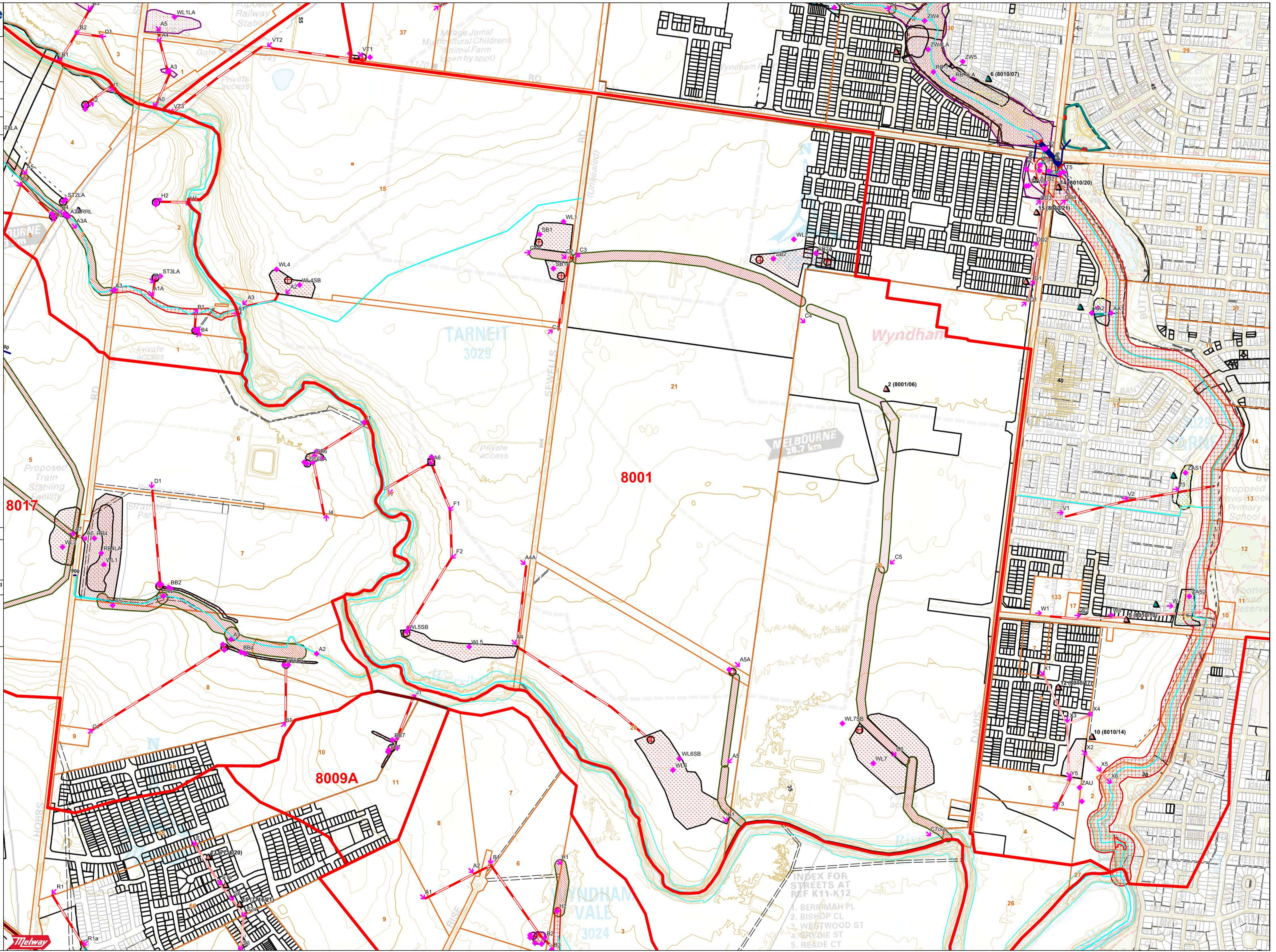
Plan Date: July 2018

Whilst every effort has been taken in collecting, validating and providing the attached data, Melbourne Water Corporation makes no representation or guarantee as to the accuracy or completeness of this data. Any person or group that uses this data does so at their own risk and should make their own assessment and investigation as to the reliability and applicability of the data. Melbourne Water Corporation shall not be liable in any way to any person or group for loss of any kind, including damages, costs, interest, loss of profits or consequential or otherwise, arising from any use, error, inaccuracy, incompleteness or other defect in the data.

Copyright Melway Publishing 2016. Reproduced from Melway Edition 44 with permission.

Melbourne Water is providing our indicative assets information and this information is for general information only. It is not intended to be used as a basis for any design and projects that the user undertakes. The user acknowledges that the user is responsible for their own design and projects and that the user should consult with a professional engineer or other qualified person for advice and assistance. Melbourne Water Corporation makes no representation or guarantee as to the accuracy or completeness of this information. Melbourne Water Corporation shall not be liable in any way to any person or group for loss of any kind, including damages, costs, interest, loss of profits or consequential or otherwise, arising from any use, error, inaccuracy, incompleteness or other defect in the data.

8001 - Werribee River Lower DSS Infrastructure 1/1



- INDEX FOR STREETS AT REF K11-K12
1. BERRIMAH PL
 2. BISHOP CL
 3. WESTWOOD ST
 4. RYDIE ST
 5. REARDE CT