

DISCOVER THE WORLD OF WATERBUGS



Waterbug Census

Join the Waterbug Census and monitor the health of your local waterway

Waterbugs (or macroinvertebrates) are small animals without a backbone that are visible to the naked eye. They are useful to indicate the health of waterway ecosystems, as different waterbugs have different sensitivity to pollution.

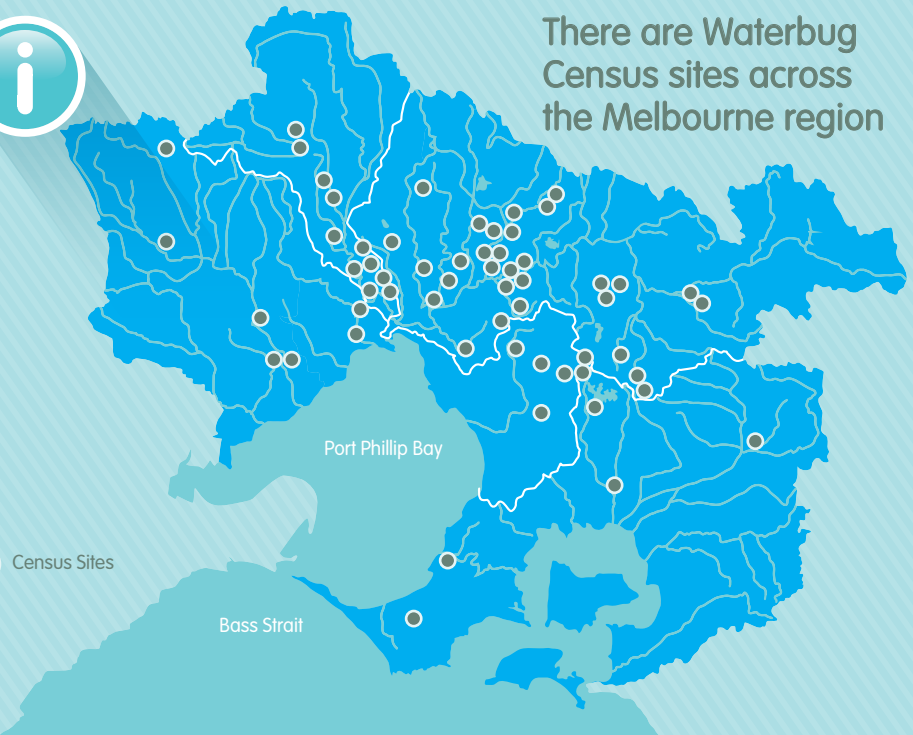
Waterwatch runs the Waterbug Census to involve community citizen scientists in local waterway monitoring.





There are Waterbug
Census sites across
the Melbourne region

 Census Sites



Help us to fill in the gaps

Waterbugs are found in every waterway, so it is easy to get involved.

The Waterbug Census monitors 150 sites on waterways across the Melbourne region. This information collected by citizen scientists improved understanding of waterway health and contributes to ongoing research.

Monitoring waterbugs is simple! You can join an existing group or even start your own along your local waterway.

Dive into the underwater world

What are Waterbugs?

Waterbugs are a diverse group of animals, including insects, worms, molluscs, crustaceans and other invertebrates.

Different waterbugs live in different parts of a waterway, depending on the habitat they like and what they eat.



Water strider

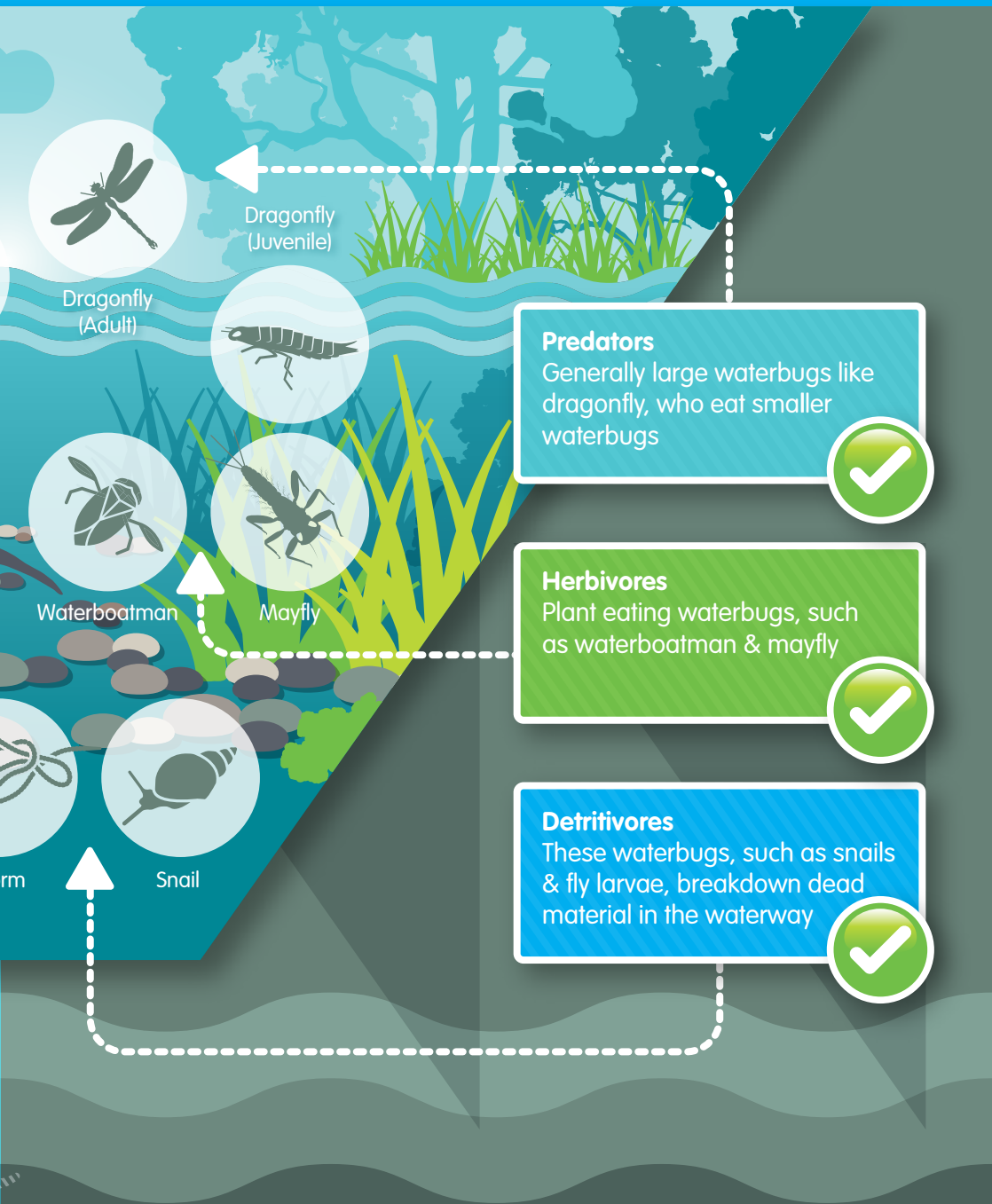


Water mite

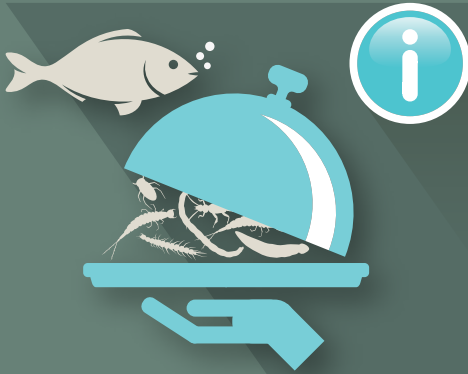


Wo

World with the Waterbug Census



Waterbug profile



Waterbugs are an important food source for other waterway animals including fish, frogs and platypus.



Most waterbugs shed their skin as they grow, as their exoskeleton can't grow with them.



Many waterbugs are juvenile insects. As adults these insects will leave the water, live on land and breathe air.



Waterbugs respond quickly to changes in their environment and water quality. Pollution harms waterbugs and reduces the number of sensitive bugs in a waterway.



The effect stormwater & litter has on our waterways

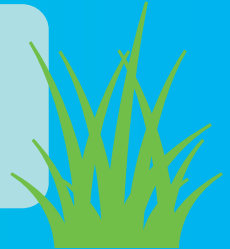
Did you know that rain running off the road goes into the stormwater drain and straight to the nearest waterway? Any pollution or litter on the ground gets washed directly into Waterbug habitat. Clean streets lead to clean streams!

For more information on waterbugs, please visit:



www.melbournewater.com.au

Waterwatch engages with the community to protect our environment. To connect with your local community group, please contact waterwatch@melbournewater.com.au or call Melbourne Water on 131 722.



Melbourne Water

990 La Trobe St Docklands
PO Box 4342
Melbourne Victoria 3001
Telephone 131 722
melbournewater.com.au

Designed by GrowCreative

ISBN 978-1-921911-95-8 (print)
e-ISBN 978-1-921911-95-8 (online)

This publication may be of assistance to you however Melbourne Water and its employees do not guarantee that the publication is without flaw of any kind or is wholly appropriate for your particular purposes and therefore disclaims all liability for any error, loss or other consequence which may arise from your relying on any information in this publication.

©Copyright July 2016 Melbourne Water Corporation. All rights reserved. No part of this document may be reproduced, stored in a retrieval system, photocopied or otherwise dealt with without the prior written permission of Melbourne Water Corporation.