

CREATING A FROG FRIENDLY HABITAT



Melbourne Water and the Community working together to protect frogs

Why create frog Habitat?

There are 35 frog species in Victoria and 16 of these live in Melbourne. All around the world frogs are declining, partly due to habitat loss, pollution and chytrid fungus. Frogs help control insect populations and they also provide an essential food source for many predators. They can act as an indicator of waterway health as they are often sensitive to changes in their habitat. By creating frog-friendly habitat you will be helping to provide vital habitat for these amazing creatures.



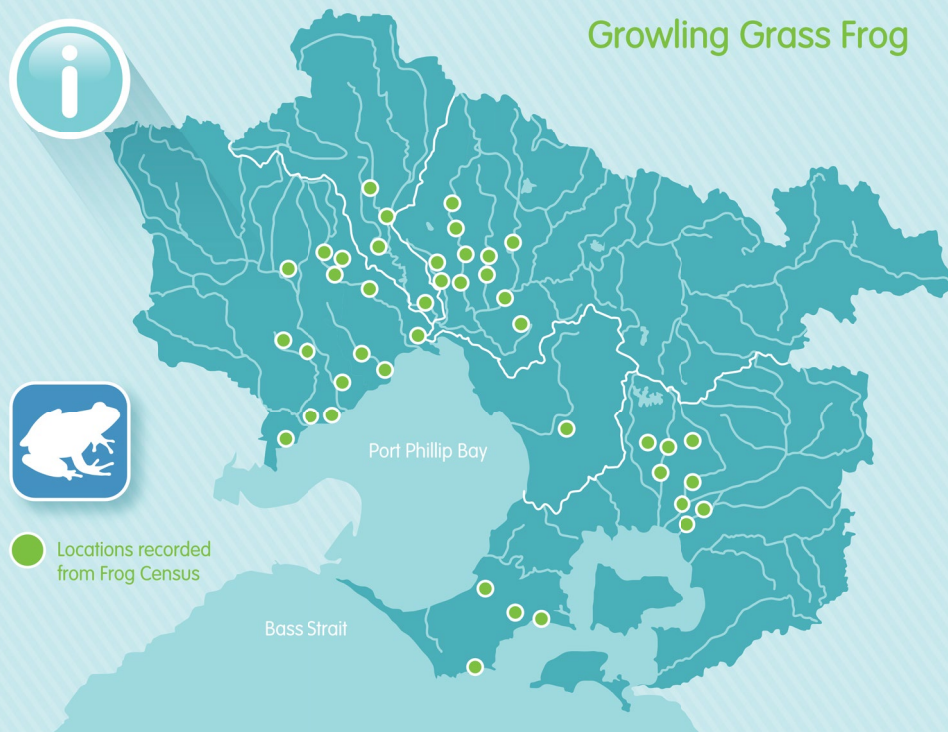
Images by Peter Robertson



Growling Grass Frog



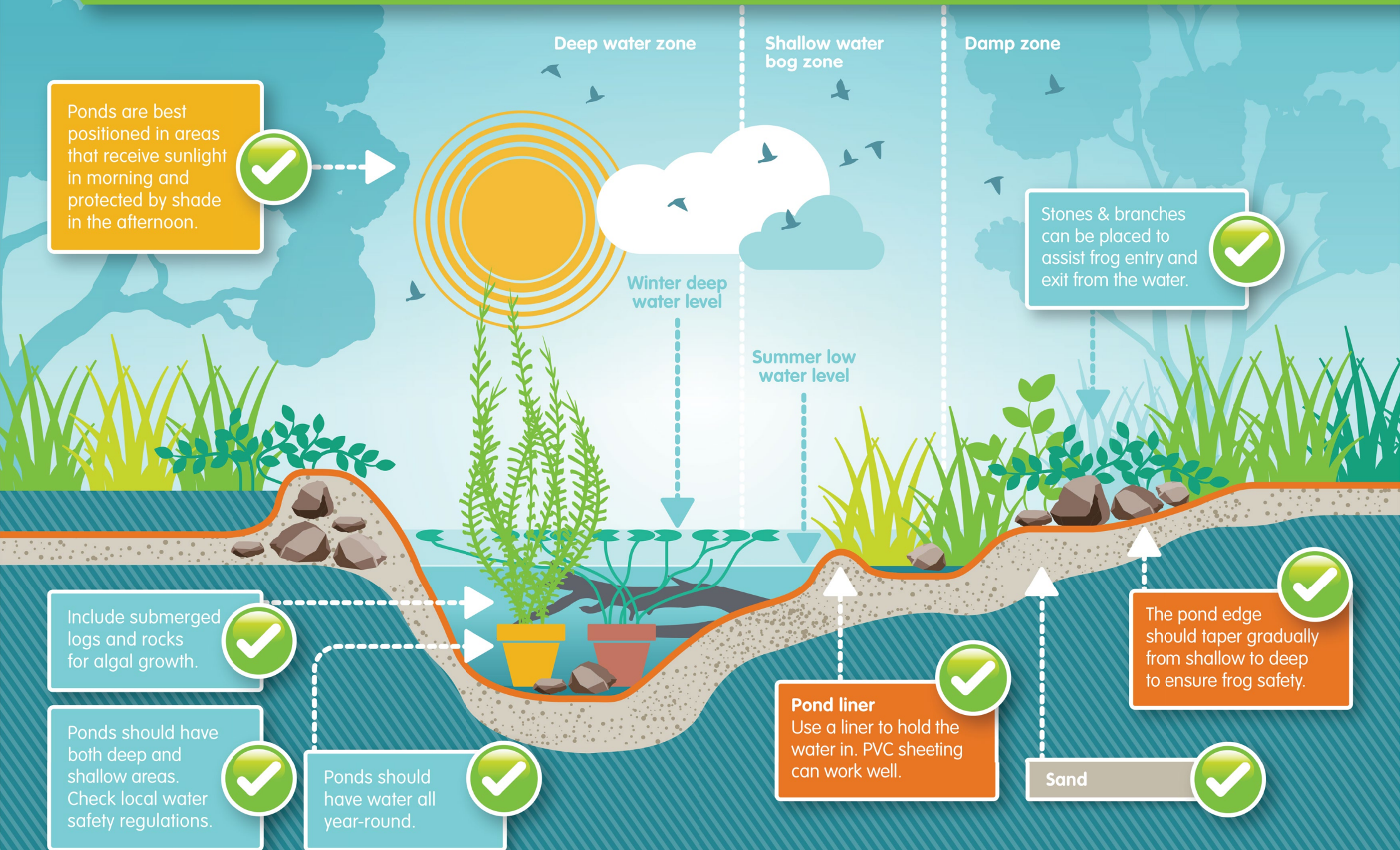
Locations recorded from Frog Census



Help us to fill in the gaps

You can help to protect frogs by participating in the Melbourne Water Frog Census. It's easy to get involved – simply download the Frog Census app on your smartphone and record what you hear. Your report will automatically be sent to us via the app and we will identify which frogs you have recorded. Your data will then be added to our records to help safeguard these vocal little critters. If you don't have access to the app, you can use a recording device and attach the datasheet found on our website (www.melbournewater.com.au/frogcensus).

Design and construct your own frog friendly habitat



Ponds are best positioned in areas that receive sunlight in morning and protected by shade in the afternoon.



Stones & branches can be placed to assist frog entry and exit from the water.



Include submerged logs and rocks for algal growth.



Ponds should have both deep and shallow areas. Check local water safety regulations.



Ponds should have water all year-round.



Pond liner
Use a liner to hold the water in. PVC sheeting can work well.



Sand



The pond edge should taper gradually from shallow to deep to ensure frog safety.



Pond sharing



It is best not to introduce fish into the pond, they may eat frog eggs. Exclude cats and dogs from the pond area, they may hunt the frogs.



Birds may also use the pond. Ensure adequate shelter and protection for frogs and tadpoles by placing rocks and logs around.



Macroinvertebrates will colonise the pond, they can be important food sources for frogs. Good diversity of water bugs indicates a healthy pond.



When the habitat is established, frogs will colonise the haven on their own. Never relocate a frog or tadpole as this can spread disease.

Pond water & plants



Avoid positioning the frog pond underneath deciduous trees - this can contribute to poor water quality and algal growth in autumn.



Use local indigenous vegetation. Plant a variety of species both in and around the pond. Avoid floating plants and plants with toxic leaves.



Ensure that polluted water cannot enter the habitat. Don't position the pond downstream from areas that may be using herbicides or pesticides.



Ponds positioned in areas that will collect water after rain are ideal. Rainwater collected from a roof is a great source of fresh clean water.

For references & further reading go to:

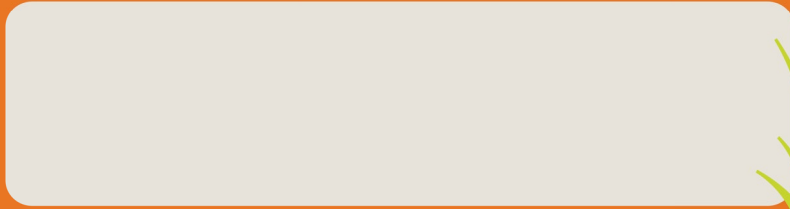
- Amphibian Research Centre - frogs.org.au
- Sustainable Gardening Australia sgaonline.org.au

For more information on frogs, please visit:



www.melbournewater.com.au/frogs

Waterwatch engages with the community to protect our environment. To connect with your local community group, please contact waterwatch@melbournewater.com.au or call Melbourne Water on 131 722.



Melbourne Water
990 La Trobe St Docklands
PO Box 4342
Melbourne Victoria 3001
Telephone 131 722
melbournewater.com.au

Designed by GrowCreative
e-ISBN 978-1-925541-03-8 (web)

This publication may be of assistance to you however Melbourne Water and its employees do not guarantee that the publication is without flaw of any kind or is wholly appropriate for your particular purposes and therefore disclaims all liability for any error, loss or other consequence which may arise from your relying on any information in this publication.

©Copyright Nov 2016 Melbourne Water Corporation. All rights reserved. No part of this document may be reproduced, stored in a retrieval system, photocopied or otherwise dealt with without the prior written permission of Melbourne Water Corporation.

