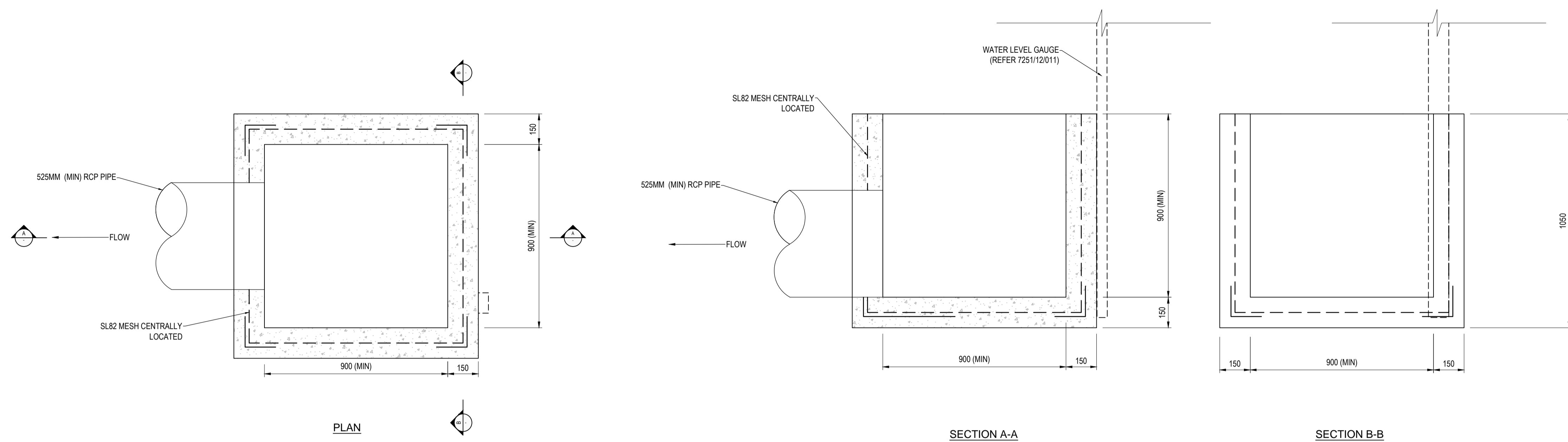
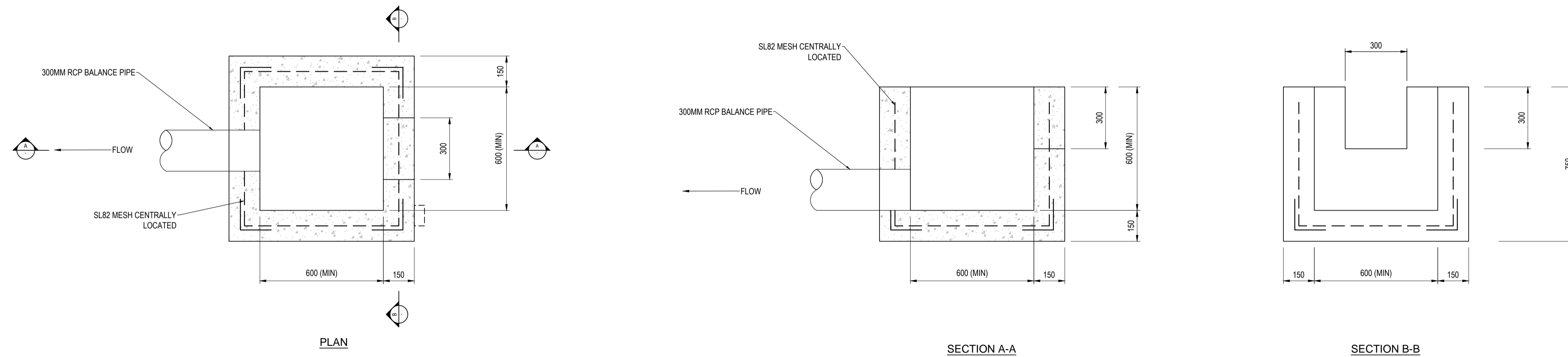


REV
7251/12/035
MVC DRAWING NUMBER
CODE

SUBMERGED OFFTAKE PIT CONNECTING TO TWIN CHAMBER OUTFALL PIT DETAIL



BALANCE PIPE SUBMERGED OFFTAKE PIT DETAIL



NOTE:

- SUBMERGED OFFTAKE PITS ARE TO BE LOCATED AT THE LOWEST POINT OF THE WATER BODY, WITH THE BASE OF THE NOTCH OR TOP OF THE PIT NO HIGHER THAN 300MM FROM THE INVERT LEVEL TO MAXIMISE DRAWDOWN WITH WITHOUT SEDIMENT ENTERING THE PIPE AND PIT.
- THE SUBMERGED OFFTAKE PIT IN CONJUNCTION WITH THE BALANCE PIPES AND TWIN CHAMBER OUTFALL PIT ARE INTEGRAL FOR CONTROLLING THE EDD AND PROVIDE EFFECTIVE DRAWDOWN CAPABILITY.
- DRAWDOWN FROM THE TWIN CHAMBER OUTFALL PIT AVOIDS MULTIPLE PUMPING POINTS, DISTURBANCE OF VEGETATION, PUMP RELOCATION, HEALTH AND SAFETY ISSUES, MAINTENANCE, TIME AND COST.
- CAN BE PURCHASED AS PRECAST UNIT.
- THE 600MM X 600MM BALANCE PIPE SUBMERGED OFFTAKE PIT CAN BE ALTERED (NOTCH CUT) ON SITE. SHOULD THE CONTRACTOR CHOOSE TO SINK THE PIT INTO THE CLAY LINER TO ACHIEVE 300MM FROM IL, CLAY LINER INTEGRITY MUST NOT BE COMPROMISED.
- THE 900MM X 900MM SUBMERGED OFFTAKE PIT (CONNECTING TO THE TWIN CHAMBER OUTFALL PIT) WHEN SUNK INTO THE CLAY LINER MUST BE 300MM ABOVE LOWEST IL OF THE POOL, THE CLAY LINER INTEGRITY MUST NOT BE COMPROMISED.
- FOR THE SUBMERGED OFFTAKE PIT CONNECTION TO THE TWIN CHAMBER OUTFALL PIT, THE MINIMUM PIPE DIAMETER IS TO BE 525MM REQUIRING A PRECAST PIT OF 900MM X 900MM RATHER THAN 600MM X 600MM.

												TITLE STANDARD DRAWING BALANCE SYSTEM AND TWIN CHAMBER OUTFALL OFFTAKE PIT REFER TO 7251/12/011 FOR WATER LEVEL GAUGE DETAILS			
								DRAFTER DRAFTING CHECK				DESIGNER ENGINEERING REVIEW			
								DESIGN MANAGER APPROVAL				PROJECT MANAGER APPROVAL			
								PROJECT DATUM				Original Size MELBOURNE WATER CORPORATION			
								SCALE				7251/12/035 MWC DRAWING NUMBER			
REV	DESCRIPTION	COMPANY	PROJECT OR WO NUMBER	DRAWN	ENG. CHECK	PR. MAN. APPD	DATE					CODE	MWC DRAWING NUMBER	REV	