

October 2024

Monbulk Creek Network Upgrade Project

Healthy waterways are essential to our native wildlife and to our way of life today, tomorrow and for generations to come.

As part of the Monbulk Creek Smart Water Network program, delivered by Melbourne Water in partnership with The University of Melbourne, South East Water and Yarra Ranges Council, we will install new equipment to actively and remotely release water flows across the 22-square-kilometre Monbulk Creek catchment area. These works will help to manage stormwater and protect the homes of the endangered platypus.

Site investigations – Monday 28 October to late November

To inform early planning, site investigations will take place at Belgrave Lake and Birdsland Reserve to help understand the ground conditions and utility services in the area. By improving the timing and volume of flows, these works will contribute to protecting the health of Monbulk Creek.

During this time, we will be carrying out works including:

- Service locating and investigation of underground utilities
- Geotechnical testing
- Non-destructive digging (NDD) and backfilling of investigation holes.

What to expect

Melbourne Water will make every effort to minimise construction impacts to our neighbours and surrounding community during these early works, however you may notice:

- Noise and vibration from machinery
- An increase in construction crews, vehicles and equipment in the area
- Temporary lane closures and speed reductions along Judkins Avenue in Belgrave
- Traffic management in place to help guide motorists and pedestrians safely through the area.

Please note that no vegetation will be removed as part of the investigation activities and your water and sewerage services will not be interrupted.

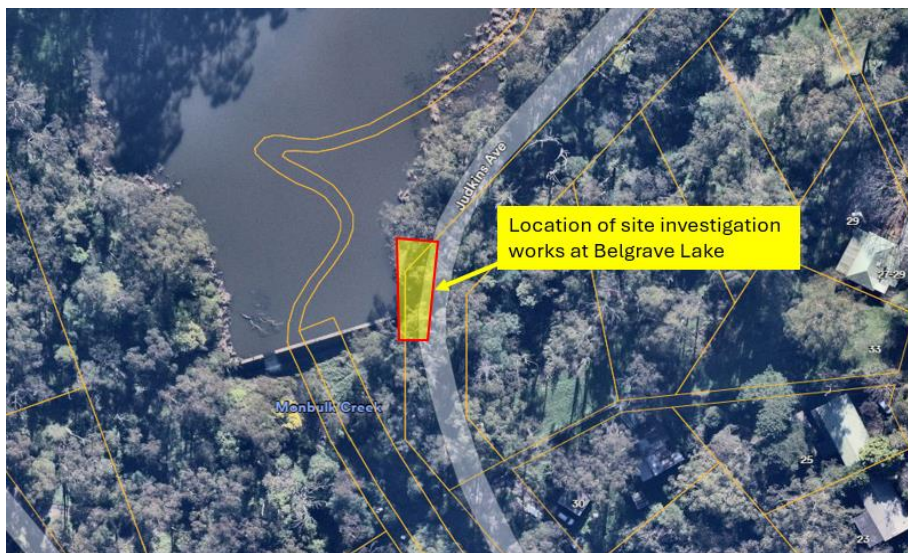
Working hours

We will be working **Monday to Friday, 7am to 5pm**, and on **Saturdays, 8am to 1pm**. Residents will be advised if any work is necessary outside these hours. Dates may change subject to weather conditions.

We understand these works can be disruptive and we appreciate your patience while these important works take place.

Location of works

Map of area below is Belgrave Lake Park, 35 Park Drive, Belgrave.



Map of area below is Birdsland Reserve, 271 Mount Morton Road, Belgrave.



How to get involved

For more information on the Monbulk Creek Smart Water Network's Tanks for Platypus program visit www.yarraranges.vic.gov.au/Environment/Sustainable-communities/Healthy-Waterways/Tanks-for-Platypus or to discuss whether your property is suitable to participate, contact Yarra Ranges Council on 1300 368 333 or sustainability@yarraranges.vic.gov.au.

Keep up to date with what's happening

For more information about this project please contact us on 131 722 or email enquiry@melbournewater.com.au



Interpreter

450

For an interpreter, please call the Translating and Interpreting Service (TIS National) on 131



Like us

facebook.com/melbournewater



Follow us

[@MelbourneWater](https://twitter.com/MelbourneWater)



Visit us

www.melbournewater.com.au