

25 March 2025

# Mount Waverley water main renewal project

## Nightworks on Fleet Street

As part of the final works on the Mount Waverley water main renewal project, we will be completing the asphaltting and line marking on Fleet Street. These works will start on **Sunday 30 March 2025** and are expected to take three nights to complete.

### What are we doing

To safely complete asphaltting works there will be a **full street closure** on Fleet Street (refer to map). Works will be at night between **9pm and 5am** when Waverley Reserve carpark and Waverley Community Learning Centre are not in use.

**When:** Sunday 30 March to Wednesday 2 April (3 nights, weather permitting)

**Time:** 9pm – 5am (each night)

### Temporary changes on Fleet Street

We will be closing the street to all vehicles during night works, this includes access to driveways and street parking. We expect it to take two nights to strip and resurface the street. Alternative parking will be on High Street Road.

Once asphaltting is finished, we will require one night to undertake line marking. Access to driveways will be open, but delays may be experienced entering and exiting the street while line marking and painting at the High Street Road intersection is underway.

### What to expect (nighttime only)

**Lights:** Temporary light towers will be required during this time. They will be positioned away from residential properties.

**Noise and vibration:** There will be noise from asphaltting machinery and equipment. Where possible, sound dampening methods will be applied.

**Driveway access:** All driveways will be closed. If you require access to your vehicle during night work hours alternative parking will be on High Street Road. Please ensure your vehicle is removed daily, prior to works commencing at 9pm.

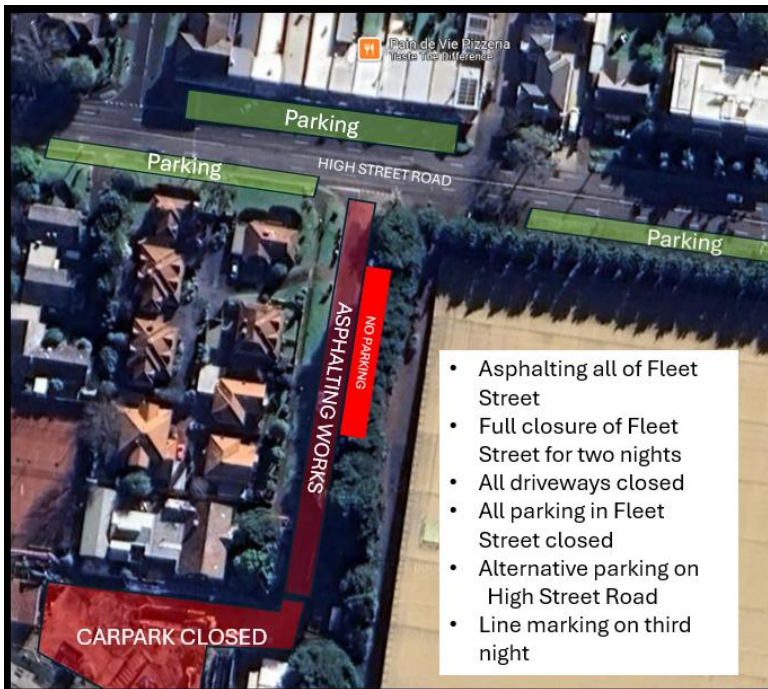
**Pedestrian access:** Footpaths along Fleet Street will always remain open. Traffic controllers will be present to safely manage traffic and pedestrians in the area.



Melbourne Water is owned by the Victorian Government. We manage Melbourne's water supply catchments, remove and treat most of Melbourne's sewage, and manage rivers and creeks and major drainage systems throughout the Port Phillip and Westernport region.



## Location of work



## What will line marking look like?

As required by Monash Council, the existing paving at the top of Fleet Street will be removed. It will be replaced with asphalt and a painted pedestrian crossing to slow entering traffic.

This will be applied in two halves to allow for curing time and room for vehicles to enter and exit if required.



## Thank you

We apologise for any inconvenience this work may cause and thank you for your patience while we complete this important work.

All work activities and dates are subject to weather and site conditions.

**Once the line marking is finished, all works on Fleet Street will be complete.**

For more information about this project please call the project team on 1800 931 106 or email [M76@melbournewater.com.au](mailto:M76@melbournewater.com.au)



Like us  
[facebook.com/Melbourne](https://facebook.com/Melbourne)



Follow us  
[@MelbourneWater](https://twitter.com/MelbourneWater)



Visit us  
[www.melbournewater.com.au](http://www.melbournewater.com.au)

Scan the QR code for access to project information via your mobile phone.



For an interpreter, please call the Interpreting Service (TIS Translating and National) on 131 450