

28 August 2024

Dear resident,

New Pedestrian Bridge Installation - Temporary Road Closures: Monday 9 September, Thursday 26 September, Friday 4 October 2024

As part of the Reimagining Moonee Ponds Creek project, a new pedestrian bridge is being installed.

Temporary road closures and changes to parking will occur for the safety of the public while these works are in progress.

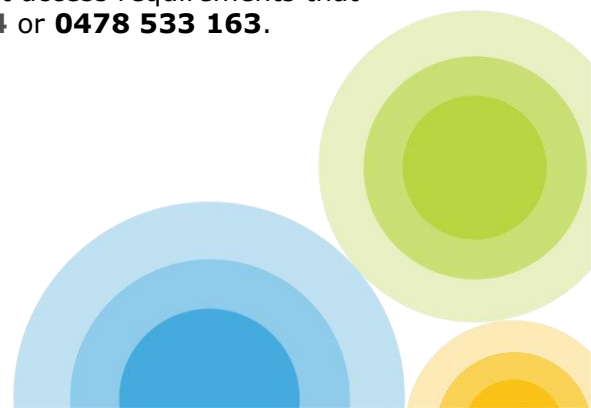
Monday 9 September 9.00am to 3.15pm Temporary road closures on Brosnan Crescent (from Odin Street to the Strathmore North Primary School) – Stage 1

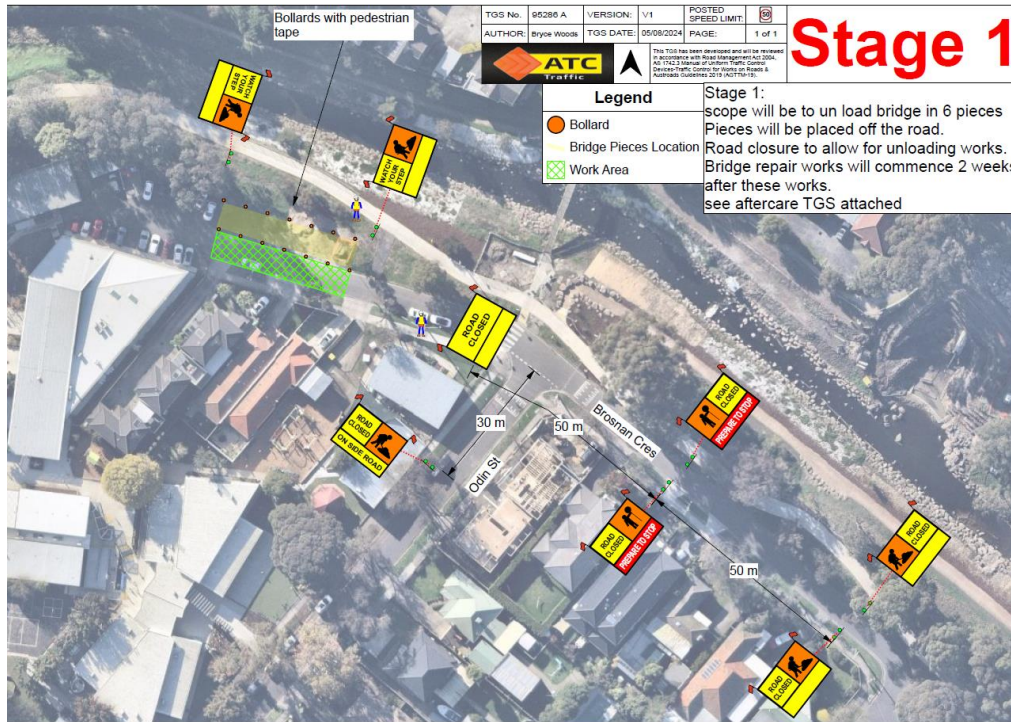
What's happening

- Delivery and unloading of bridge sections will take place **between 9.00am and 3.15pm.**

What to expect

- Road closures will not occur during school drop off and pick up times.
- The existing pedestrian bridge and shared user path will be open.
- The intersection at Odin Street and Brosnan Crescent will be open.
- Vehicle access to the Strathmore North Primary School and private properties will be restricted intermittently when the unloading is in progress (about 30 minutes per delivery).
- No on-street parking will be available. Please avoid parking in the street during these times.
- School staff and residents are advised to park outside the work zone **prior to 9.00am** if vehicle access is required during these times.
- Parking in nearby streets will be available, noting local parking restrictions.
- Pedestrian and traffic detours will be in place. Please follow the signs.
- Traffic controllers will be on site to assist pedestrians and traffic.
- If you have any mobility issues, medical needs or urgent access requirements that maybe impacted by these works contact **0499 314 864** or **0478 533 163.**





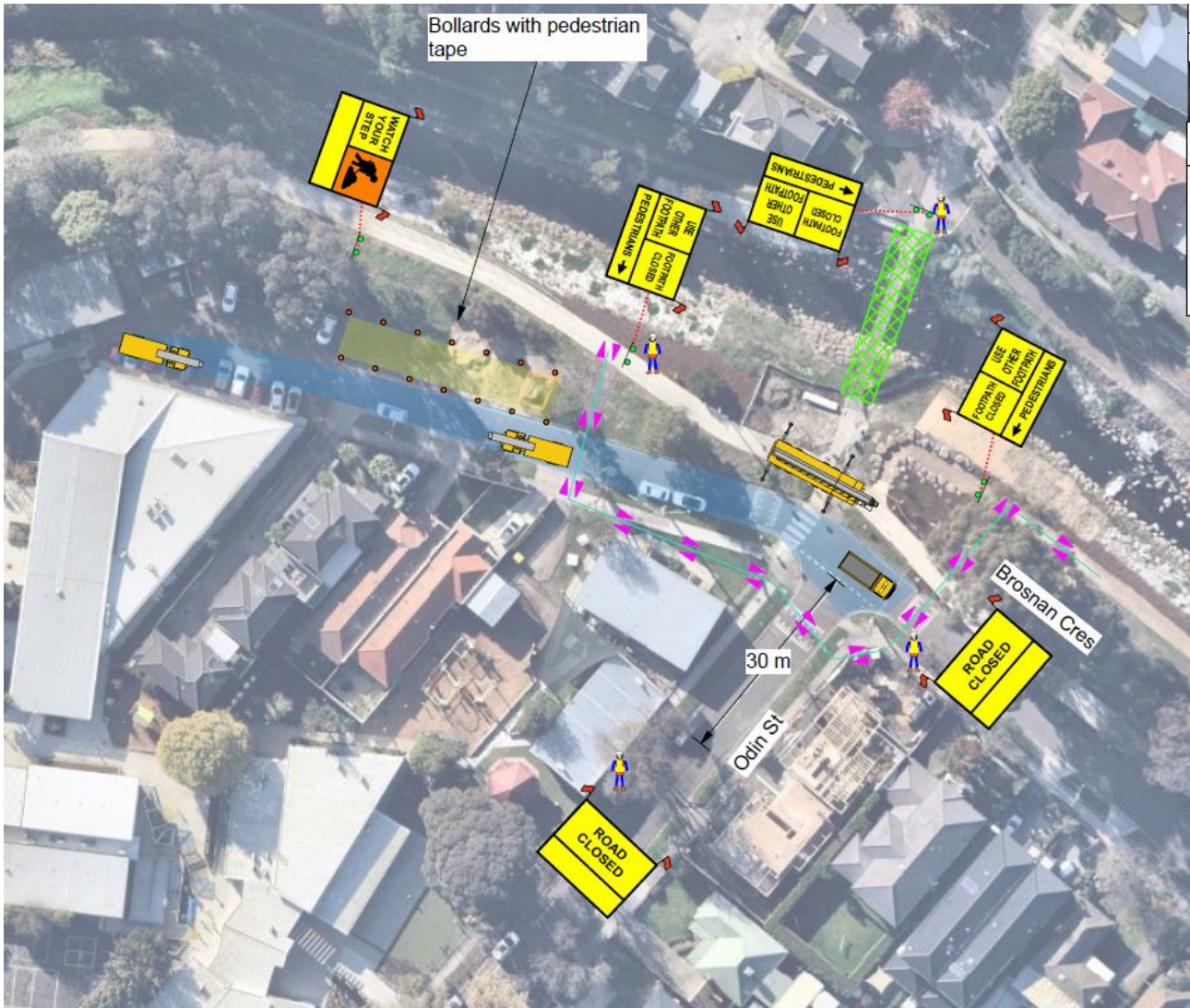
Thursday 26 September between 7.30am and 5.00pm Intersection (Odin Street & Brosnan Crescent) and the existing bridge will be closed – Stage 2

What’s happening

- Bridge sections will be assembled and the bridge craned into position **between 7.30am and 5.00pm.**

What to expect

- The existing bridge, shared user path, intersection of Odin Street & Brosnan Crescent will be closed.
- Access to private properties and the Strathmore North Primary School will be restricted when the bridge movement and placement is in progress.
- No on-street parking will be available. Please avoid parking in the street during these times.
- School staff and residents are advised to park outside the work zone **prior to 7.30am** if vehicle access is required during these times. Parking in nearby streets will be available, noting local parking restrictions.
- Pedestrian and traffic detours will be in place. Please follow the signs.
- Traffic controllers will be on site to guide pedestrians and traffic.
- If you have any mobility issues, medical needs or urgent access requirements that maybe impacted by these works contact 0499 314 864 or 0478 533 163.



Friday 4 October – Stage 3

What's happening

- Existing bridge removal.

What to expect

- Further details to be provided by a letterbox drop closer to the time.

Thank you in advance for your cooperation while we carry out these works.

The Reimagining Moonee Ponds Creek Project Team

T: 1800 952 911

E: mooneeponds.creek@melbournewater.com.au