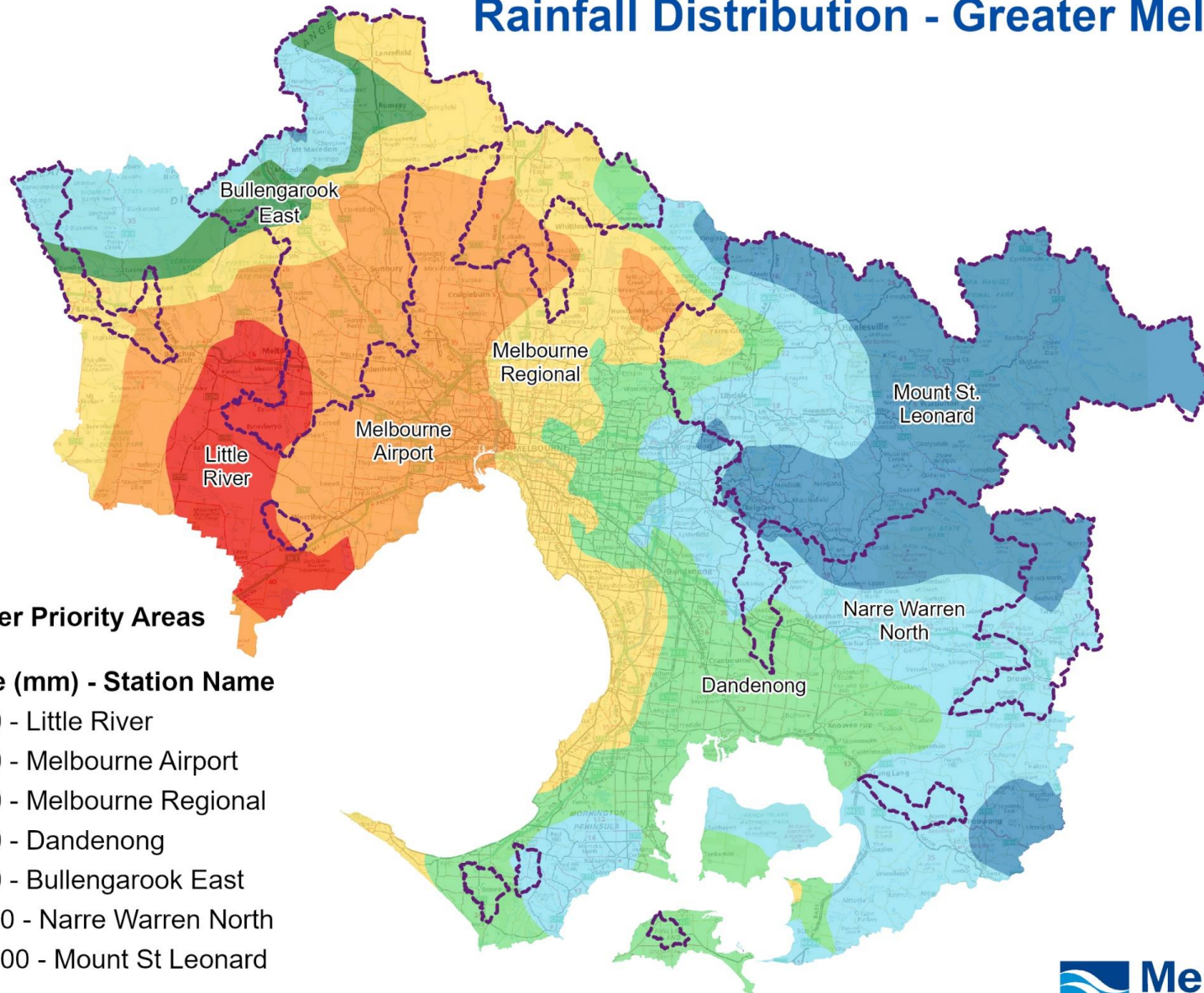


Rainfall Distribution - Greater Melbourne



--- Stormwater Priority Areas

Rainfall Range (mm) - Station Name

- 400 to 500 - Little River
- 500 to 650 - Melbourne Airport
- 650 to 750 - Melbourne Regional
- 750 to 850 - Dandenong
- 750 to 850 - Bullengarook East
- 850 to 1100 - Narre Warren North
- 1100 to 2100 - Mount St Leonard

Copyright Melway Publishing 2016. Reproduced from Melway Edition 44 with permission.

Whilst every effort has been taken in collecting, validating and providing the attached data, Melbourne Water Corporation makes no representations or guarantees as to the accuracy or completeness of this data. Any person or group that uses this data does so at its own risk and should make their own assessment and investigations as to the suitability and/or application of the data. Melbourne Water Corporation shall not be liable in any way to any person or group for loss of any kind including damages, costs, interest, loss of profits or special loss or damage, arising from any use, error, inaccuracy, incompleteness or other defect in this data.