



Upgrade of Hawthorn East Retarding Basin at Rathmines Reserve Community Bulletin - November 2023

What we do

In Melbourne, rain and storms are part of everyday life. Floods are a natural part of our landscape and weather cycle. That's why Melbourne Water is upgrading the Hawthorn East Retarding Basin, located next to Rathmines Reserve, to minimise the risk of flooding to surrounding homes and businesses.

Works in your area

Melbourne Water will be upgrading the 100-year-old Hawthorn East retarding basin at Rathmines Reserve. The new retarding basin will significantly increase water storage capacity, reduce flooding events and keep our community safe.

Estimated project timeline

Construction will take approximately 12 months, weather dependent, during normal working hours between Monday to Friday, 7am–5pm.



2022-2023 - Project design



LATE 2023 - Tree removal & site investigations



EARLY 2024 - Construction commencing



EARLY 2025 - Project completion

* These dates are indicative and subject to change with no prior notice due to weather conditions.

Why are retarding basins important to our community?

Retarding basins are an important feature of the drainage system that helps to reduce flooding to local homes and businesses.

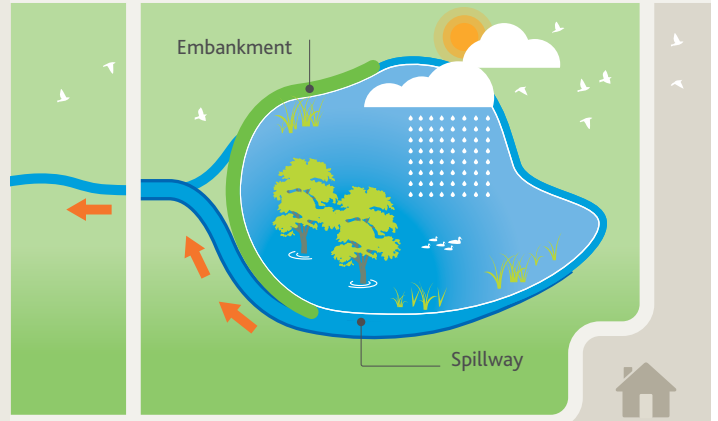
They're designed to catch heavy rainfall, and is a better alternative to overloading the underground drains and potentially flooding properties.

Retarding basins are critical in built-up areas. Pavements, driveways and other hard surfaces create more runoff, meaning the water is less likely to soak into the ground.

Retarding basins are designed to protect communities living near or downstream from them.

How a retarding basin works

When a retarding basin fills, the spillway controls and directs the overflow downstream.



Project location



These works will allow approximately another **100 years** of operation of the Hawthorn East Retarding Basin.

Project overview

Originally built in the 1920's, the Hawthorn East Retarding Basin is in need of an upgrade to improve safety in and around the site.

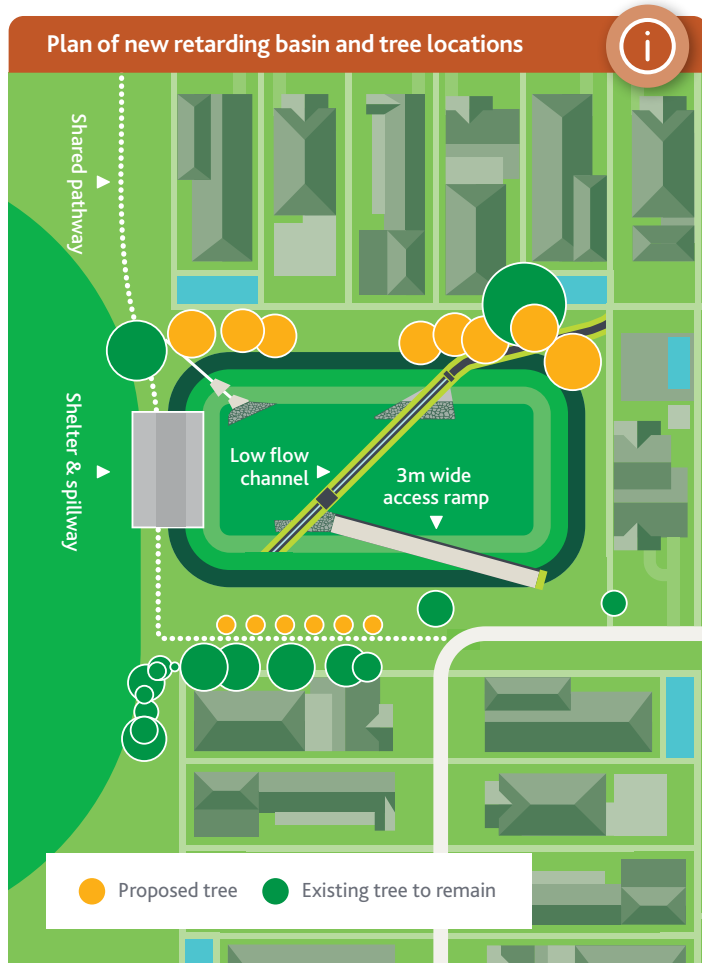
Melbourne Water is looking to improve the reliability of the retarding basin by rebuilding its embankments, maximising storage capacity, and maintaining its purpose in flood protection.

Melbourne Water manages retarding basins in line with the Australian National Committee on Large Dams (ANCOLD) guidelines. These guidelines represent best Australian and International engineering practice in the safe design, management and operation of dams. Recent investigations show that the Hawthorn East retarding basin is currently not meeting the ANCOLD guidelines and requires an upgrade.

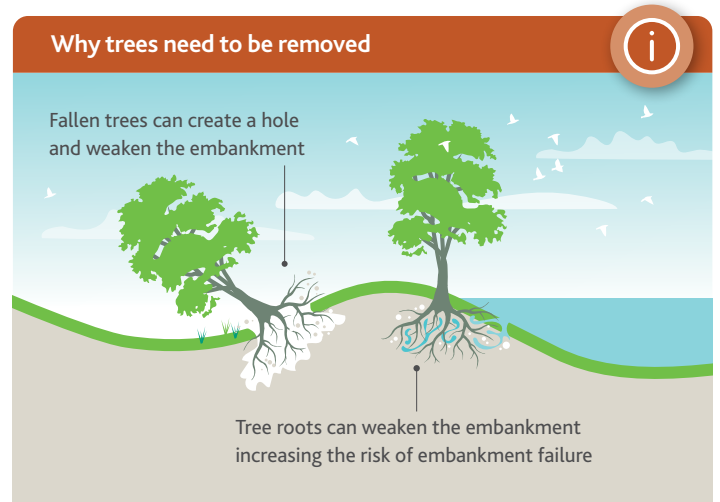
What we will be doing

- Increasing the storage capacity by deepening the basin and extending out the embankment walls
- Re-locating the existing spillway closer to Rathmines Reserve to minimise the risk to flooding to residential properties
- Removing any old infrastructure
- Tree removal along the length of the embankment, approximately 57 trees and 15 saplings will be removed as part of this work
- Build a shelter and concrete steps at Rathmines Road Reserve to overlook the sports oval. This will also act as a spillway for the retarding basin

Plan of new retarding basin and tree locations



Why trees need to be removed



Managing tree removal

Melbourne Water understands that tree removal is a key issue for the local Hawthorn East community.

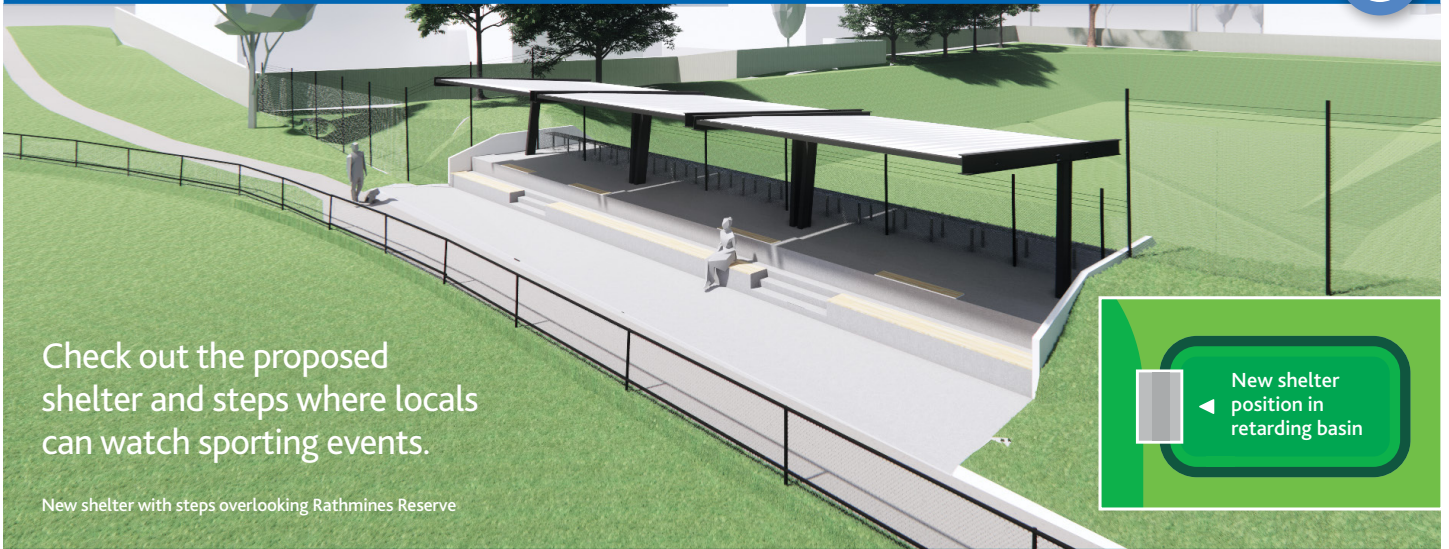
In order to upgrade the retarding basin and to minimise the risk of future flooding, approximately 57 trees and 15 saplings will need to be removed in the area of the retarding basin. The trees need to be removed due to safety concerns and to reduce the risk of the roots damaging the embankment wall if the tree falls.

An independent arborist will be engaged prior to undertaking any tree or vegetation removal. We are committed to re-planting trees in the area and will work with Council to determine appropriate native species that can be planted.

Melbourne Water manages over 200 retarding basins as part of our world class drainage system.



New shelter design and position



Check out the proposed shelter and steps where locals can watch sporting events.

New shelter with steps overlooking Rathmines Reserve



What's next

We're getting ready to start construction. The initial works will include tree removal and site investigations. Construction is expected to begin late 2023. We will continue to provide updates to the community as information becomes available.

Construction impacts

While these works take place, the community may experience some general construction impacts, including:

- Truck movements in and out of Ryeburne Avenue, Hawthorn East
- Truck movements along Rathmines Road and Kildare Street, Hawthorn East
- Potential path diversion around retarding basin
- General construction impacts to residents i.e. dust, noise and path closures.

We will work to ensure the community disruption is kept to a minimum.

PROJECT BENEFITS



- ✓ Reduced risk of flooding
- ✓ Safer & easier to maintain the retarding basin
- ✓ Meet industry dam safety standards
- ✓ A new architect designed shelter

Timing of works

Works are expected to start late 2023 and will take approximately 12 months to complete, weather permitting. Our contractor, Aqua Metro Services (AMS) will carry out these works on Melbourne Water's behalf.

MORE INFORMATION



If you would like more information about the Hawthorn East Retarding Basin Upgrade project, contact the project team at:

- 1800 560 755
- HawthornEast.RB@melbournewater.com.au
- www.melbournewater.com.au/herb/

Scan the QR code below for current project information



To access the TTY and Interpreter Services: TTY 133 677
Interpreter: 131 450

