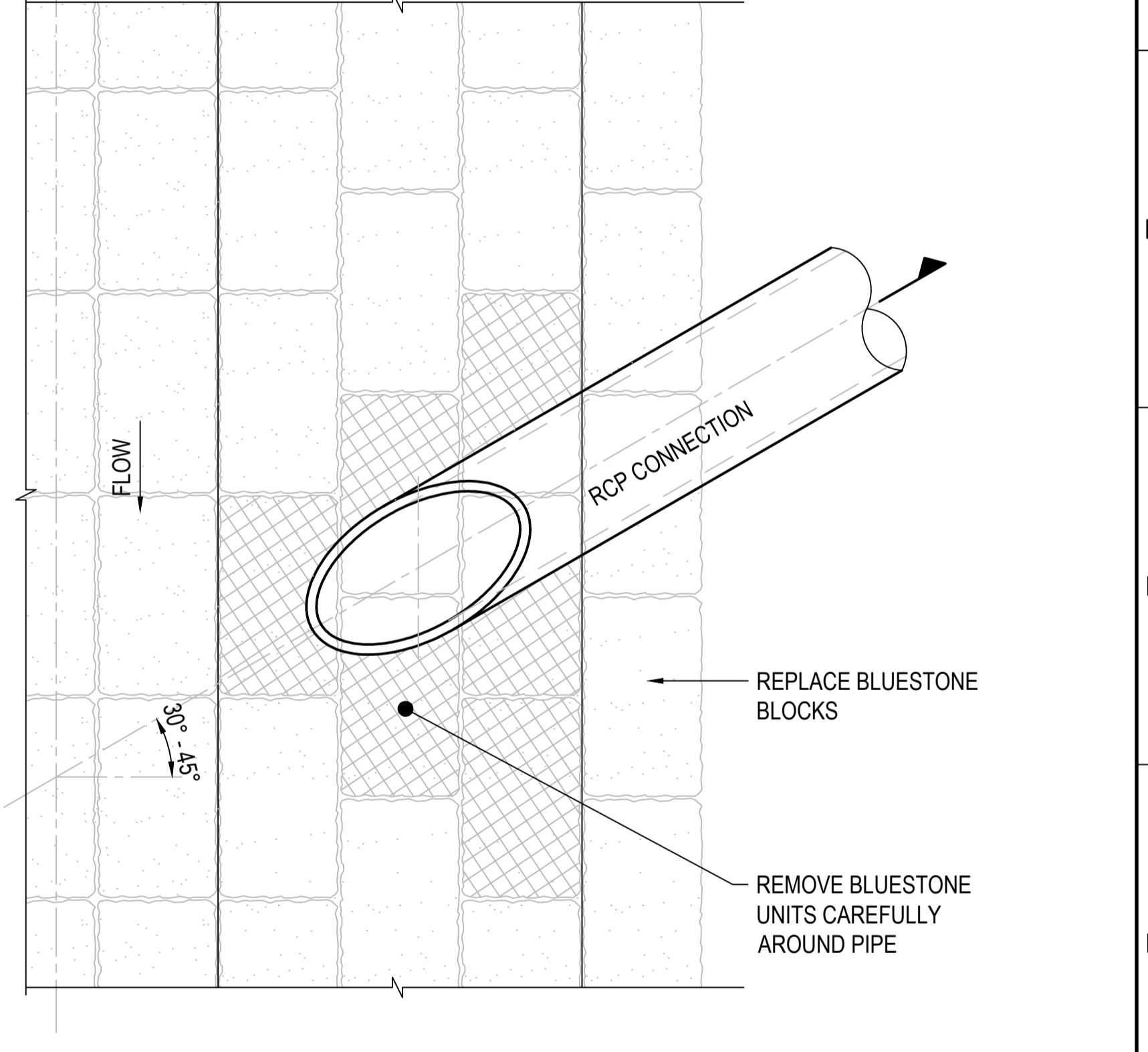
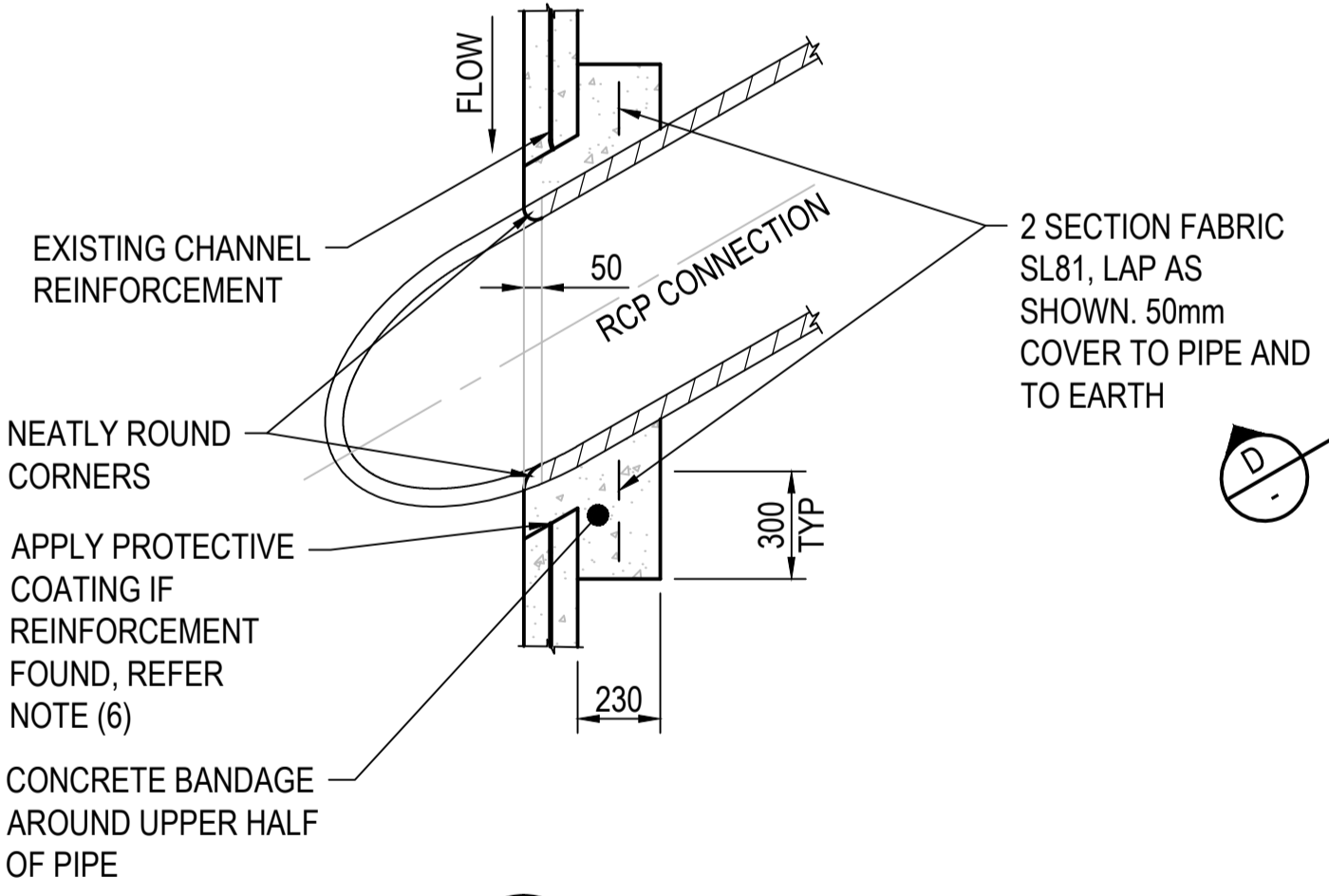
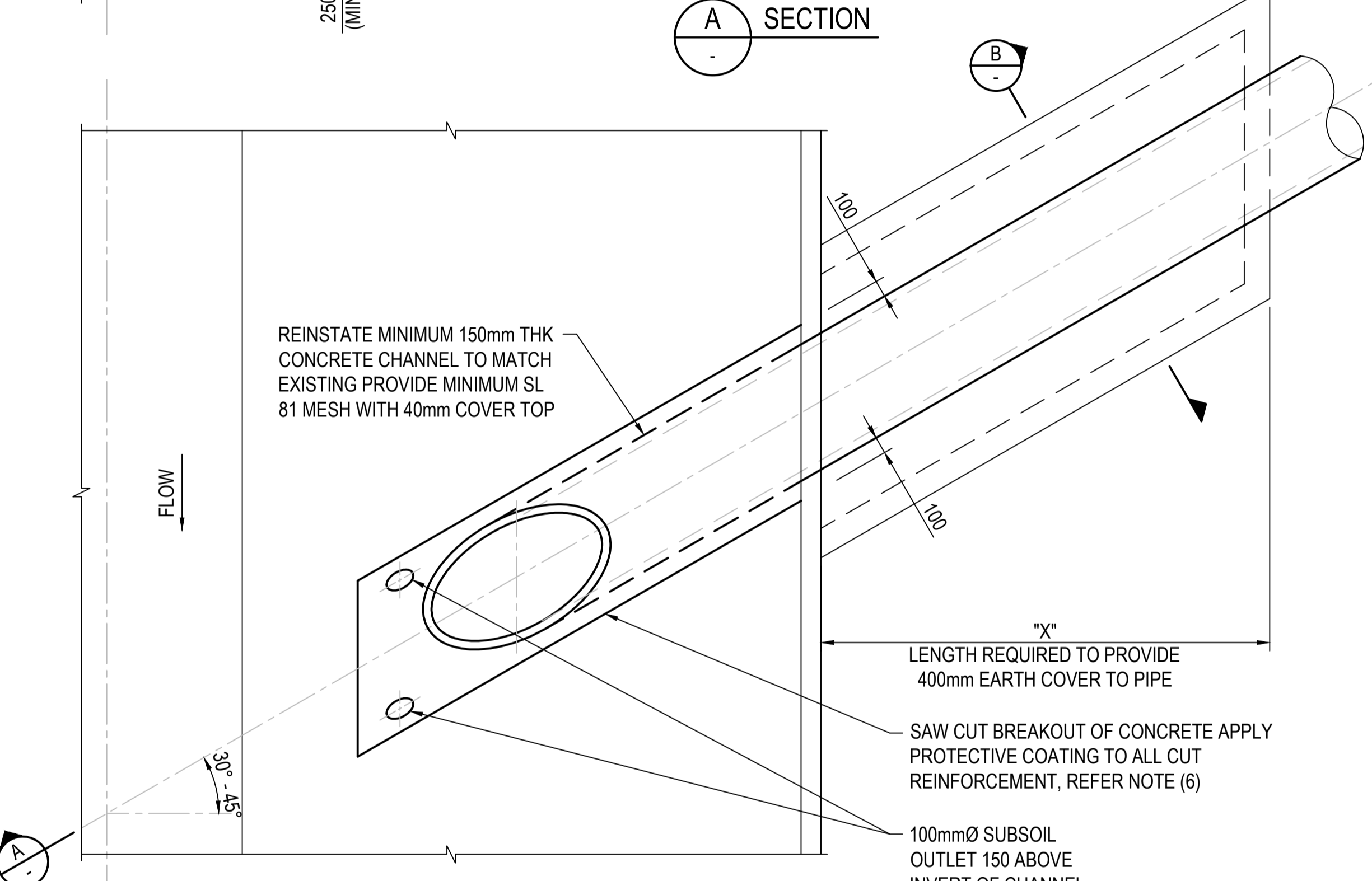
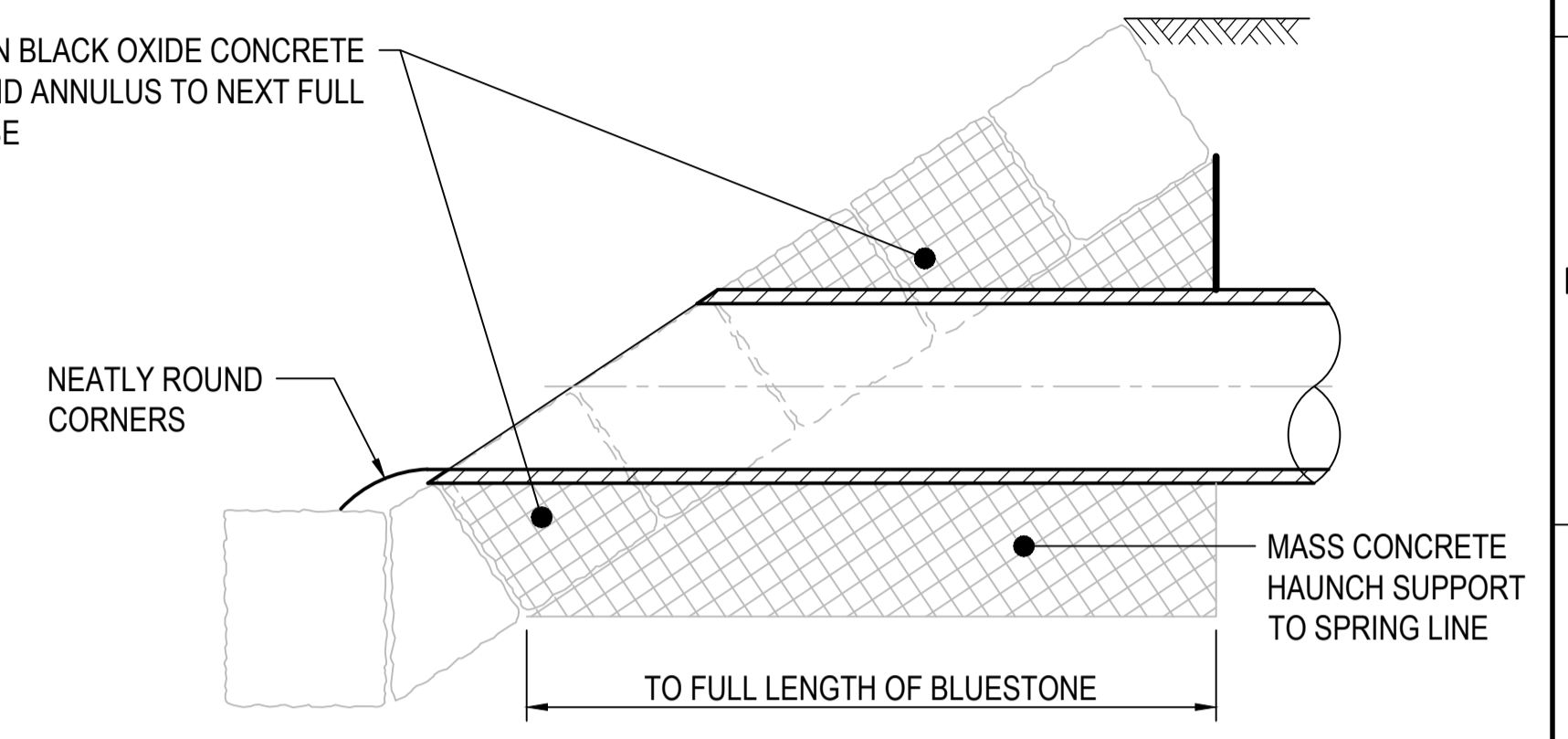
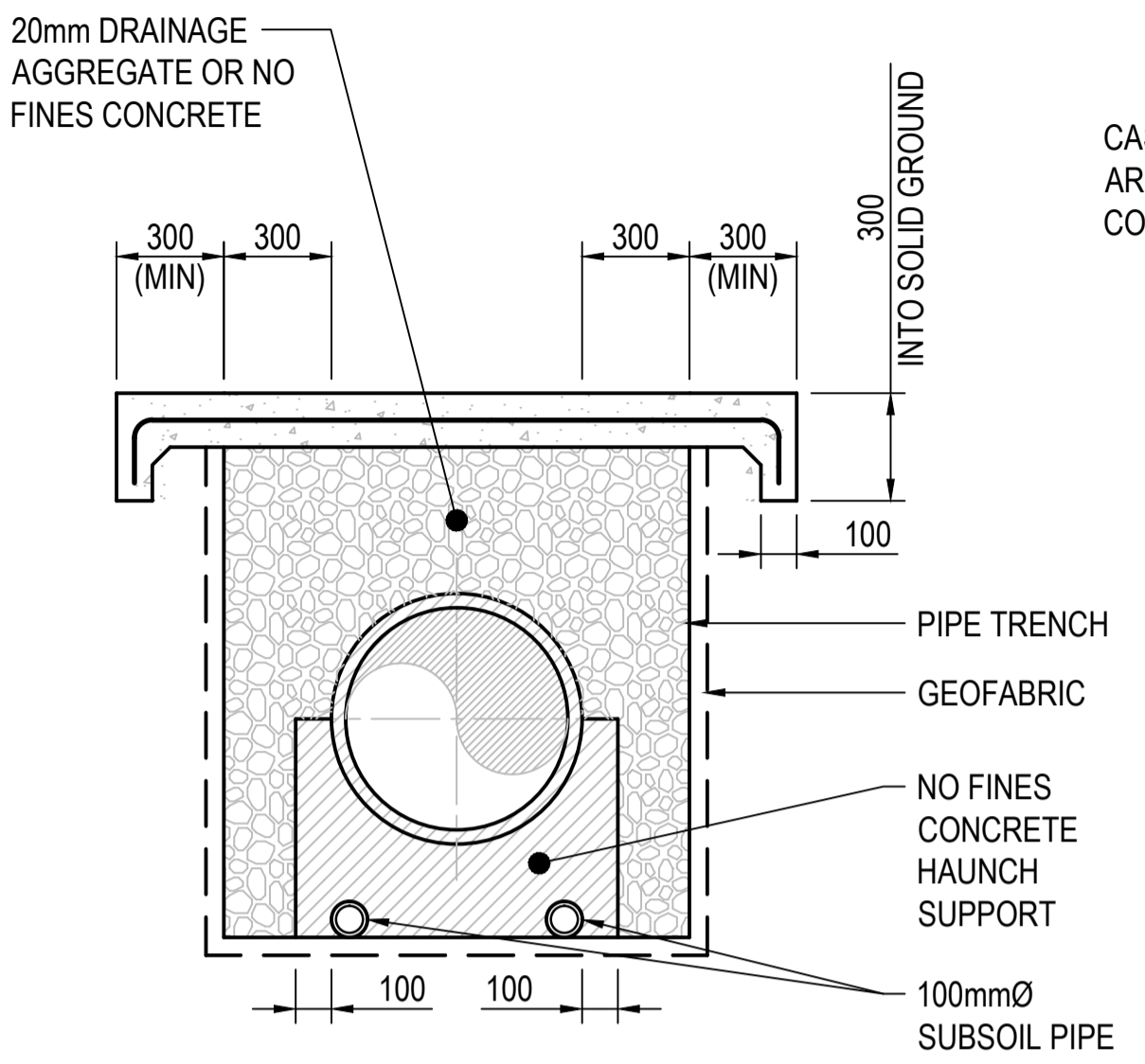
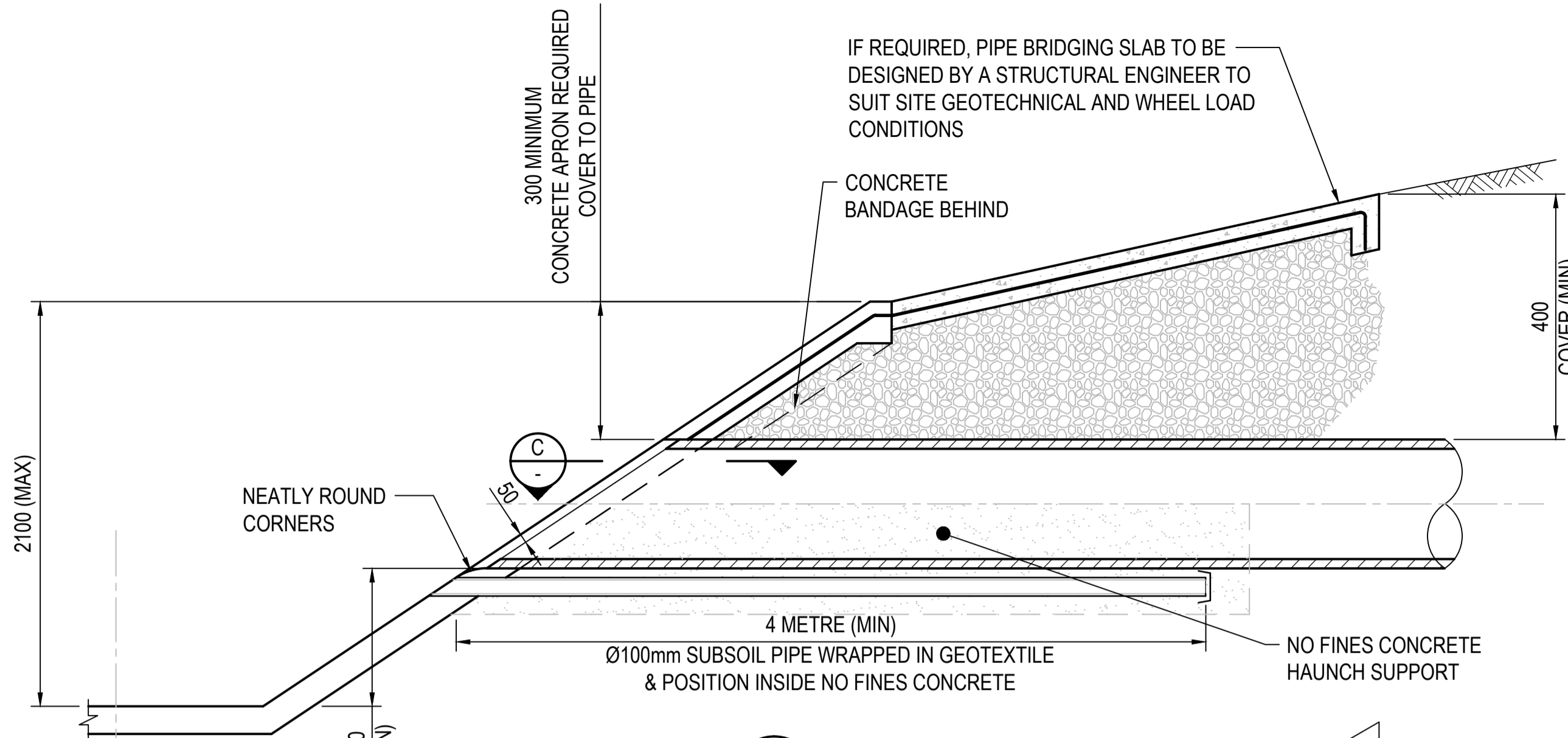


A
7251/08/426
MVC DRAWING NUMBER
CODE



- NOTES:**
1. DETAILS ARE RELEVANT FOR TRAPEZOIDAL OPEN CHANNELS ONLY.
 2. SUITABLE FOR PIPE CONNECTIONS WHERE CHANNEL DEPTH IS (MIN) 3 TIMES PIPE DIAMETER. FOR CONNECTIONS WHERE PIPE DIAMETER IS MORE THAN 1/3 OF CHANNEL DEPTH SIZE SPECIFIC CONNECTION DRAWING TO BE FORWARDED TO MVC FOR APPROVAL.
 3. CONCRETE SHALL NOT BE LESS THAN N32. TO BE DIRECTED BY THE PROJECT ENGINEER.
 4. BACKFILL OVER PIPE TO BE COMPACTED UNTIL THE DRY DENSITY IS IN EXCESS OF 95% OF THE MAXIMUM DRY DENSITY OBTAINED FROM THE STANDARD COMPACTION TEST AS PER A.S. 1239.
 5. ALL PIPES WITHIN THE WATERWAY OR DRAINAGE RESERVE TO BE RUBBER RING JOINTED.
 6. APPLY PARCHEM NITOCOTE EP 410 EPOXY COATING (OR EQUIVALENT) TO A MINIMUM THICKNESS OF 450 MICRON TO ALL SAW CUT SURFACES ON EXISTING PIPELINE / CONCRETE SURFACES.
 7. IT IS THE DESIGNER'S RESPONSIBILITY TO ENSURE THAT THE NOMINATED MELBOURNE WATER STANDARD DRAWINGS ARE SUITABLE FOR PROJECT USE.

PLAN - CONCRETE CHANNEL

PLAN - BLUESTONE CHANNEL

<p>COPYRIGHT Copyright - This document is the property of Melbourne Water. Use or copying of the document in whole or in part, for other than Melbourne Water purposes, without the written permission of Melbourne Water constitutes an infringement of copyright.</p>										<p>MELBOURNE WATER CORPORATION</p>		<p>TITLE PIPE CONNECTIONS INTO TRAPEZOIDAL CONCRETE AND BLUESTONE OPEN CHANNELS</p>	
<p>DRAINAGE STANDARD DRAWINGS</p>										<p>PROJECT DATUM</p>		<p>Original Size A1</p>	
<p>DRAFTER RD</p>		<p>DESIGNER JB</p>		<p>DESIGN MANAGER APPROVAL RM</p>		<p>PROJECT MANAGER APPROVAL VY</p>		<p>SCALE NTS</p>		<p>7251/08/426</p>		<p>A</p>	
<p>DRAFTING CHECK BS</p>		<p>ENGINEERING REVIEW RM</p>		<p>DATE 25.11.15</p>		<p>COMPANY MELBOURNE WATER CORPORATION</p>		<p>PROJECT OR WO NUMBER</p>		<p>DRAWN RD</p>		<p>ENG. CHECK RM</p>	
<p>PR. MAN. APPD. RM</p>		<p>DATE 25.11.15</p>		<p>1</p>		<p>2</p>		<p>3</p>		<p>4</p>		<p>5</p>	
<p>REV</p>		<p>DESCRIPTION</p>		<p>1</p>		<p>2</p>		<p>3</p>		<p>4</p>		<p>5</p>	