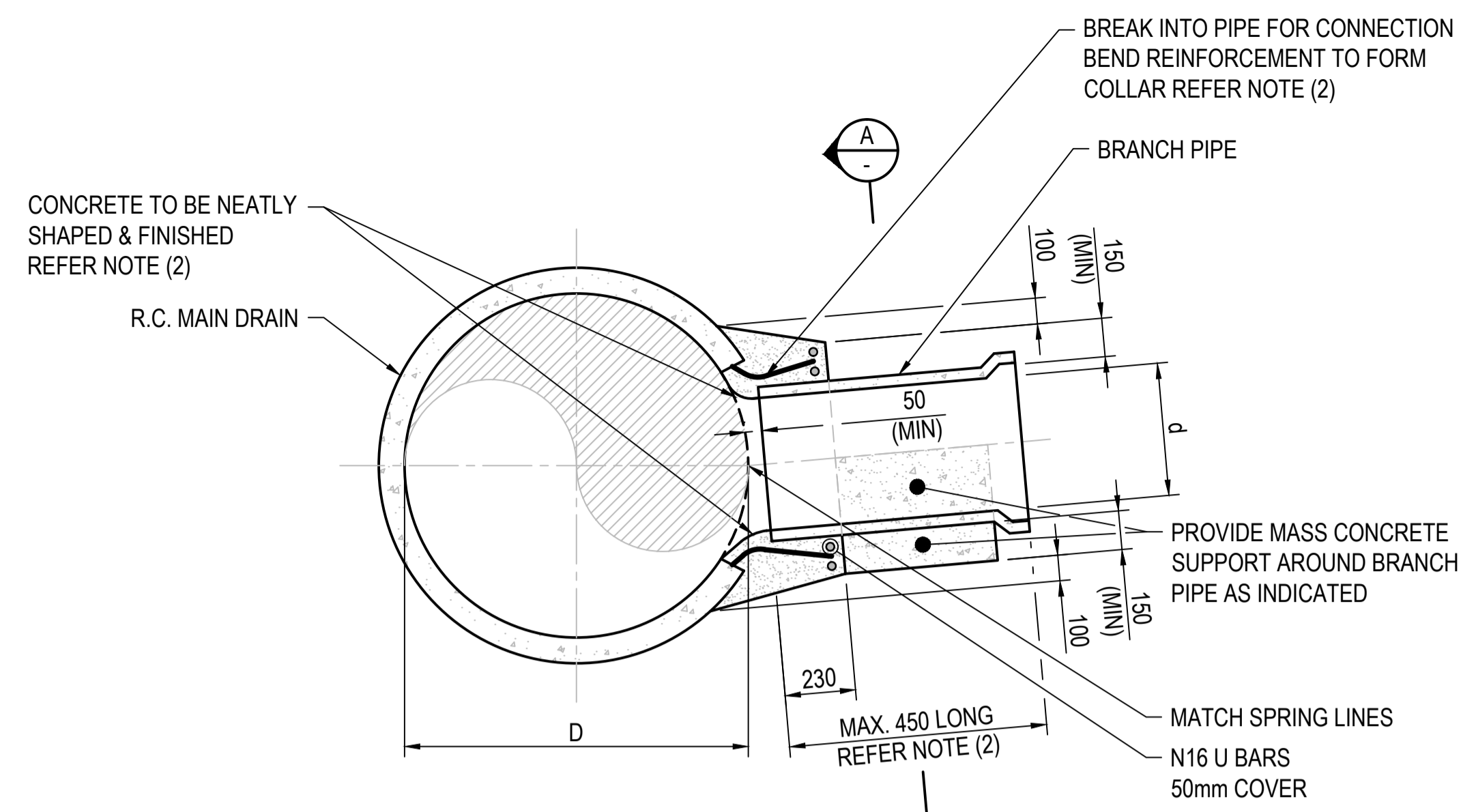


PREFERRED BRANCH LOCATION ALONG MAIN DRAIN  
PLAN

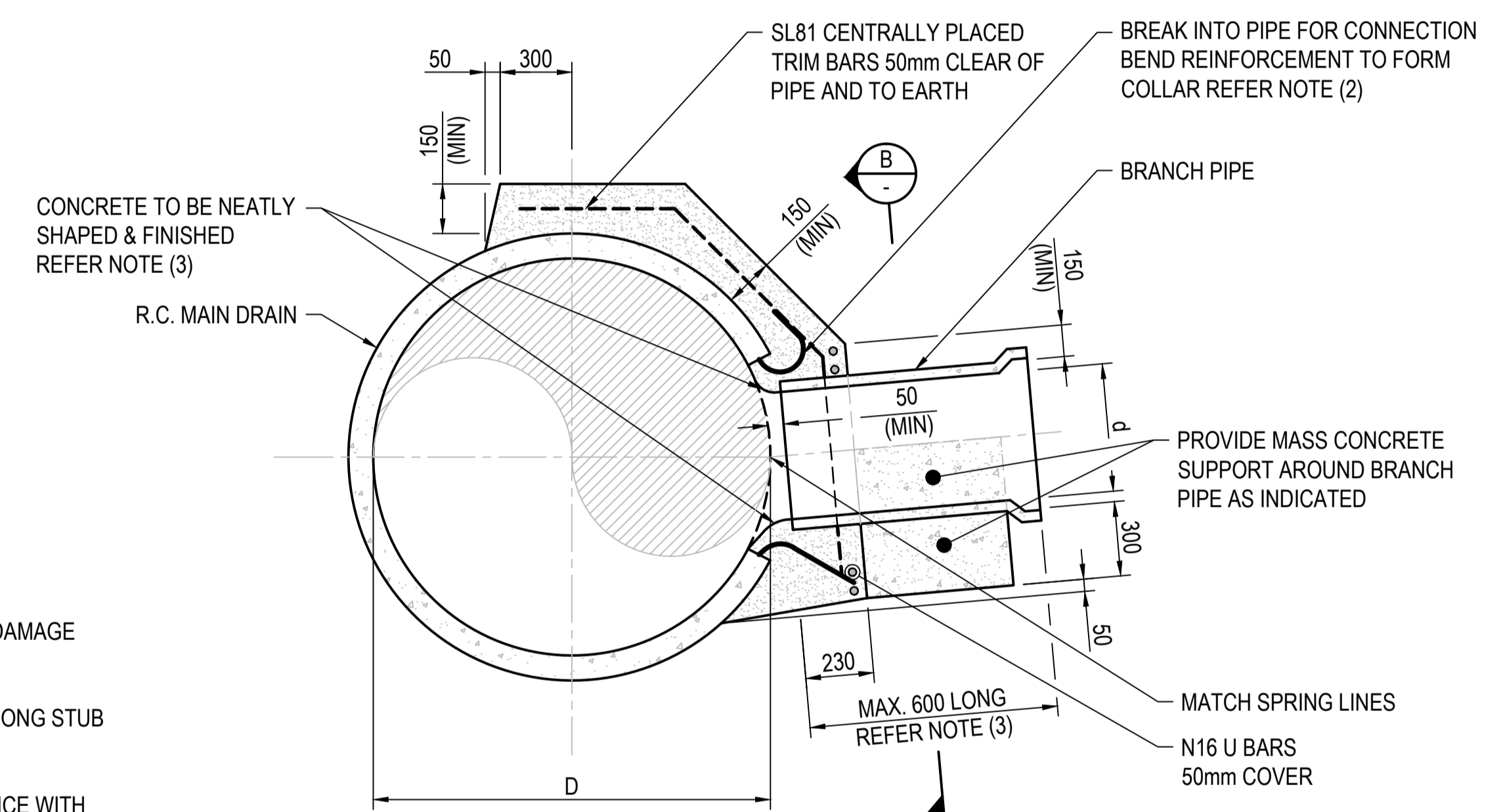
**NOTE:**  
PREFERENCE SHOULD BE GIVEN TO ANGLING BRANCH PIPE AT 45° IN DOWN STREAM DIRECTION. WHEN 'd' < D/6, ANGLE OF BRANCH PIPE MAY BE INSTALLED PERPENDICULAR TO MAIN DRAIN.

**NOTES:**

1. REINFORCEMENT IN MAIN DRAIN TO BE CUT AND FORMED INTO COLLAR. CARE SHOULD BE TAKEN TO PREVENT DAMAGE TO PIPE AND TO ENSURE SIZE OPENING IS KEPT TO A MINIMUM.
2. WHERE CONNECTION CANNOT BE RENDERED FROM INSIDE MAIN DRAIN, CONNECTION TO CONSISTS OF 300mm LONG STUB TO ALLOW RENDERING FROM OUTSIDE.
3. ANY CONNECTION WORKS PERFORMED FROM INSIDE A MELBOURNE WATER MAIN DRAIN MUST BE IN ACCORDANCE WITH MELBOURNE WATER'S 'CONFINED SPACE ENTRY' WORK PROCEDURES.
4. BONDING OF NEW TO OLD CONCRETE SHALL BE SUFFICIENT TO ENSURE NO CRACKS OR LEAKS FORM. CONCRETE SURFACES TO BE SCABBLED, CLEANED PRIMED WITH PARCHEM NITOBOND SBR. ALL REINFORCEMENT WITHOUT ADEQUATE COVER (IE. LESS THAN 30mm) TO BE EPOXY SEALED OR SIMILARLY TREATED.
5. CONCRETE SHALL BE GRADE S40 WITH A MAXIMUM WATER CEMENT RATIO OF 0.50.
6. PIPE CONNECTIONS TO BE LOCATED AT THE SPRING LINE OF MAIN DRAIN.
7. PENETRATION OF BRANCH TO BE MINIMUM 600mm OFFSET TO THE NEAREST MAIN DRAIN PIPE EDGES.
8. THIS DRAWING DOES NOT COVER CONNECTIONS TO ASBESTOS CEMENT PIPES.
9. THE CONNECTION POINT TO MELBOURNE WATER MAIN DRAIN IS NOT MELBOURNE WATER ASSET. THE CONNECTION IS TO BE MAINTAINED BY RELEVANT WATER AUTHORITY AS SHOWN ON CONCEPT DRAWING 7251/08/418.
10. BACKFILL AROUND BRANCH CONNECTION IN ACCORDANCE WITH DRAWING 7251/08/419.
11. FOR CONNECTION INTO UNREINFORCED MAIN DRAINS PROVIDE POST INSTALLED REINFORCEMENT TO STRUCTURAL ENGINEER'S DIRECTION.
12. FOR ALL CONNECTIONS GREATER THAN 150mm DIAMETER ONLY CONCRETE PIPES SHALL BE USED.

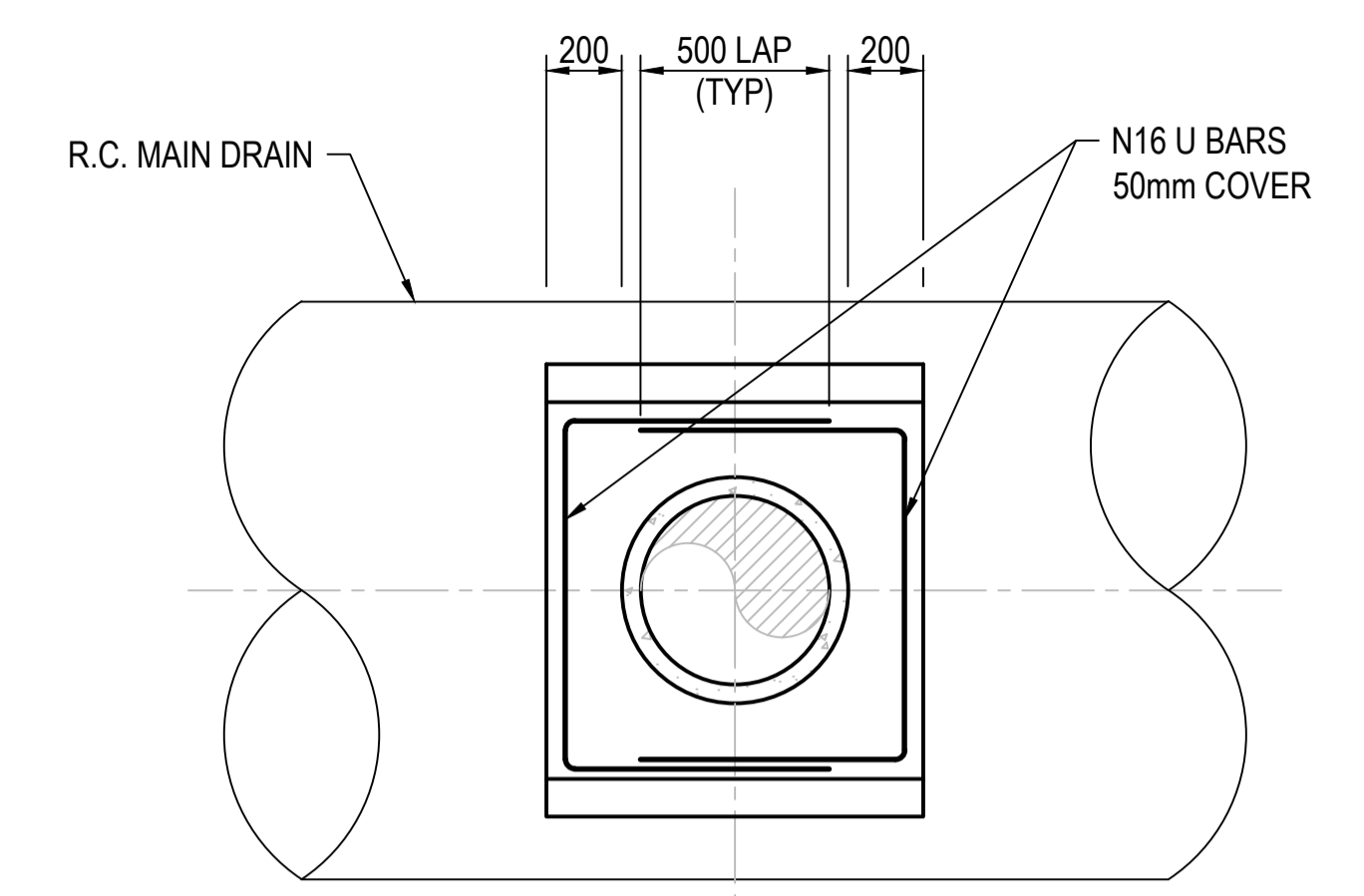


BRANCH PIPE UP TO Ø375  
PROVIDED 'd' IS LESS THAN 'D/3'

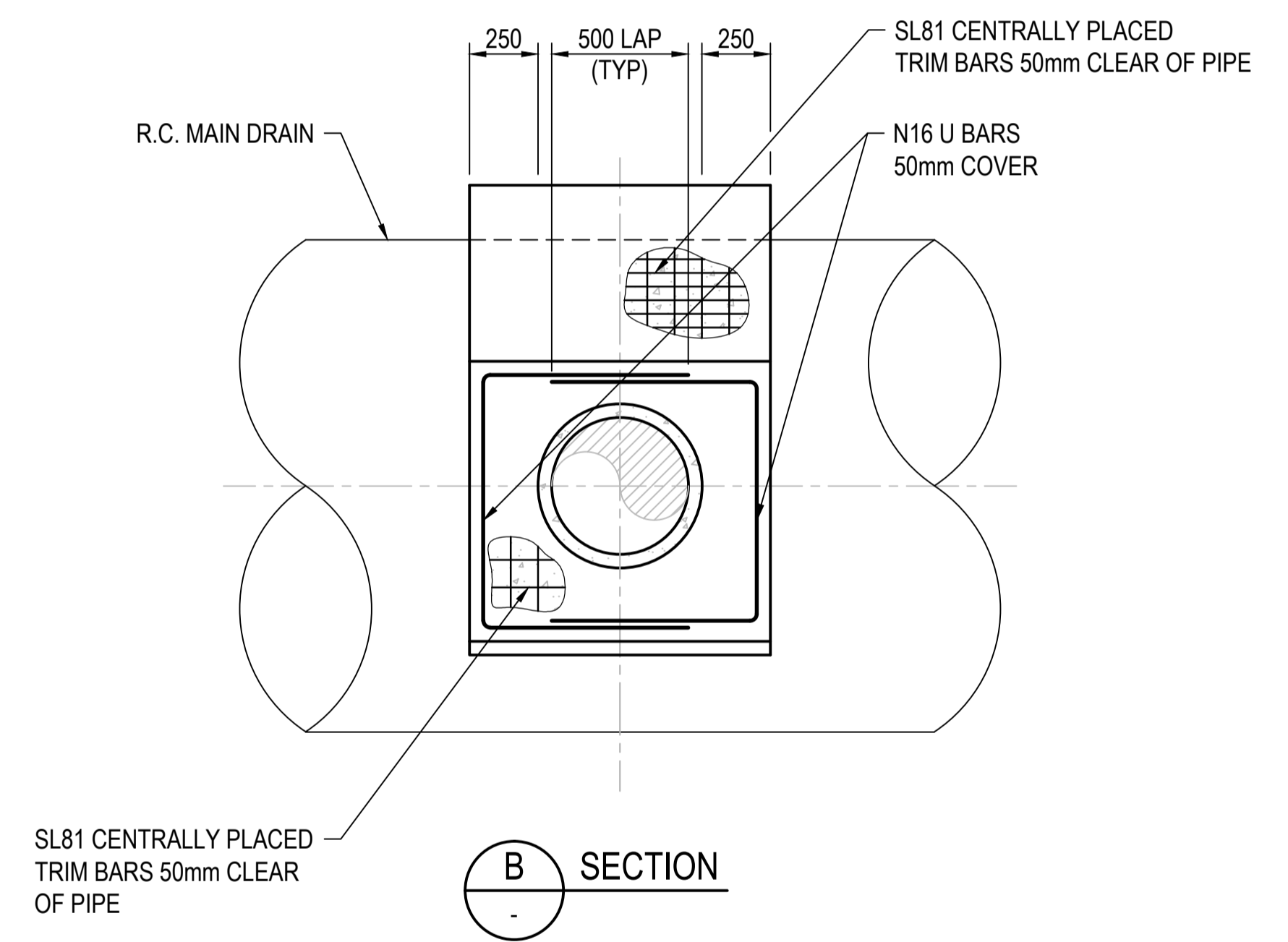


BRANCH PIPE Ø450 AND LARGER  
PROVIDED 'd' IS LESS THAN 'D/3'

**NOTE:**  
WHEN 'd' IS GREATER THAN 'D/3' A NEW JUNCTION PIT OR CHAMBER MUST BE DESIGNED. REFER TO MELBOURNE WATER JUNCTION PIT STANDARD DRAWING DETAILS.



A SECTION



B SECTION

COPYRIGHT Copyright - This document is the property of Melbourne Water. Use or copying of the document in whole or in part, for other than Melbourne Water purposes, without the written permission of Melbourne Water constitutes an infringement of copyright.										Melbourne Water DRAINAGE STANDARD DRAWINGS		TITLE <b>PIPE TO PIPE CONNECTION TO MAIN DRAINS</b>	
DRAFTER RD		DESIGNER GT		DESIGN MANAGER APPROVAL RM		PROJECT MANAGER APPROVAL VY		PROJECT DATUM		Original Size <b>A1</b>		MELBOURNE WATER CORPORATION	
DRAFTING CHECK BS		ENGINEERING REVIEW VY						SCALE NTS		7251/08/425		A	
REV		DESCRIPTION		COMPANY		PROJECT OR WO NUMBER		DRAWN		ENG. CHECK		PR. MAN. APPD.	
1		2		3		4		5		6		7	