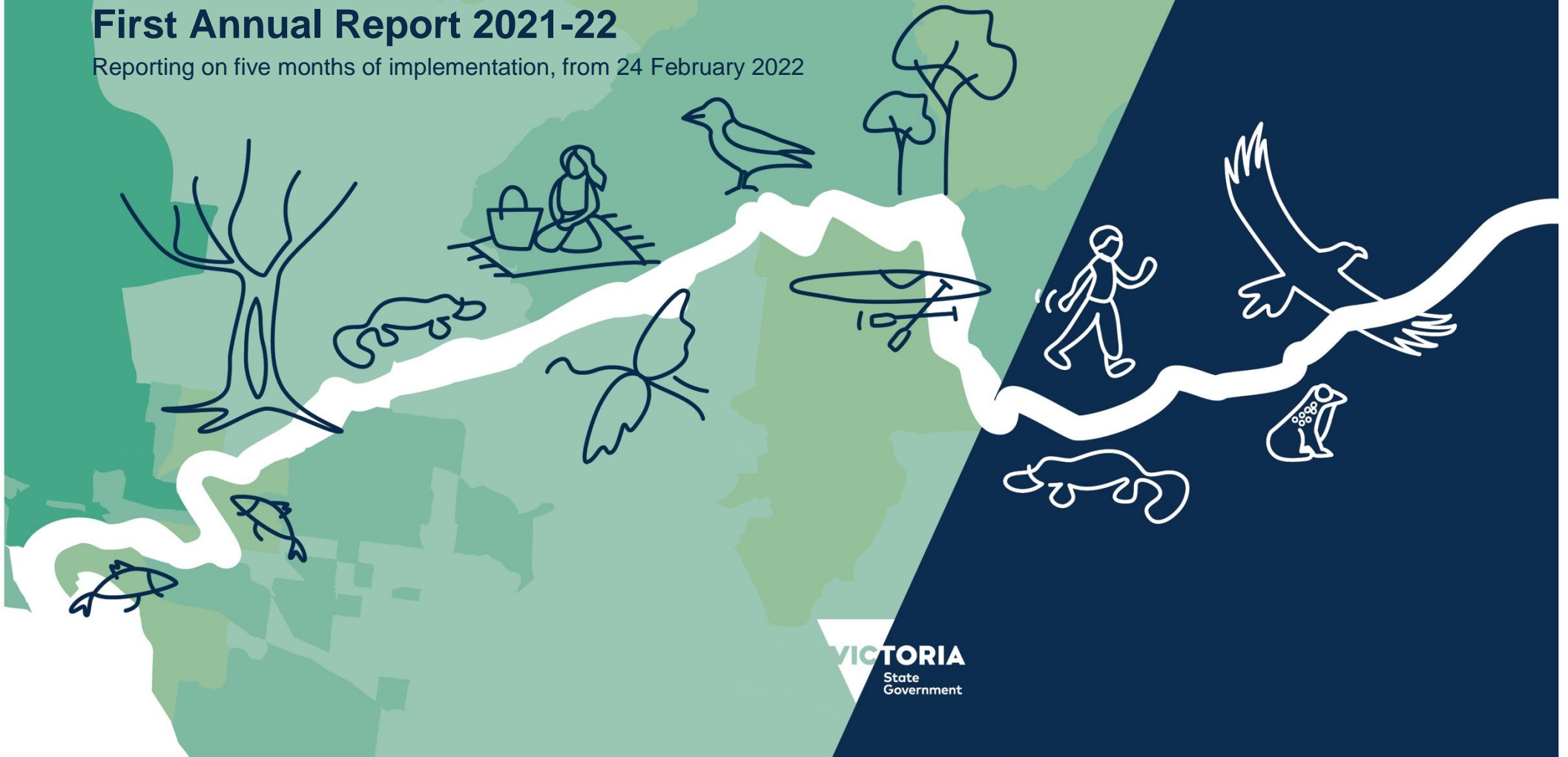


BURNDAP BIRRARUNG BURNDAP UMARKOO YARRA STRATEGIC PLAN

First Annual Report 2021-22

Reporting on five months of implementation, from 24 February 2022



Acknowledgement of Country

We acknowledge Traditional Owners and their Elders past and present as the original custodians of Victoria's land and waters.

We acknowledge and pay our respects specifically to the Wurundjeri Woi-wurrung people and Bunurong people, the Traditional Owners of the land through which the Birrarung flows.

We pay our respects to their Elders past, present and emerging and to the ongoing living culture of Aboriginal and Torres Strait Islander Peoples.

Yarra River 50 Year Community Vision

Our Yarra River, Birrarung, is recognised around the world as an iconic example of a nurturing relationship between a river and its community.

Flowing from source to sea, it is the resilient lifeblood of past, present and future generations of Victorians. It connects and enriches our flourishing city, suburbs, regions and beyond.

Our Yarra River, Birrarung, its essential role in our lives and its rich history, are respected, understood and protected. It has cared for us for thousands of years and will for thousands to come.

The vital and continued role of Traditional Owners as custodians of the River, and its role in their culture, is recognised and celebrated.

Our Yarra River, Birrarung, and its diverse surrounding landscapes provide a place of refuge, recreation, learning and livelihood. It brings communities together and supports sustainable local economies.

Its clean waters and connected network of thriving green spaces nurture biodiversity, and deepen the relationship between people and nature.

Our Yarra River, Birrarung, is respected as a sacred natural living entity and everyone takes responsibility for its care. Its health and integrity are paramount and uncompromised.

'Burndap Birrarung burndap umarkoo' (what is good for the Yarra is good for all).



Contents

- Summary 4
- About the Plan and its implementation 7
- Implementation priorities in 2022 13
- Status of Actions 18
- Status of Activities 23
- Next steps 28
- Attachment 1 – Yarra Collaboration
Committee members 2021-22..... 29
- Attachment 2 – Activities progress
tracker..... 30



Summary

The Yarra Strategic Plan – Burndap Birrarung burndap umarkoo 2022–2032 (the Plan) puts the interests of the river and its lands at the heart of future land use planning and decision-making. It sets out a transformative shift for collaborative governance between government agencies and Wurundjeri Woi-wurrung Cultural Heritage Aboriginal Corporation and Bunurong Land Council Aboriginal Corporation. Importantly, ensuring the river and its lands are protected as one living and integrated natural entity.

Endorsed by multiple Ministers, the Plan launched in February 2022, will bring to life the 50 year community vision for the Yarra and deliver on the Birrarung Water Policy, *Nhanbu narrun ba ngargunin twarn Birrarung – Ancient Spirit and Lore of the Yarra* articulated by the Wurundjeri Woi-wurrung people.

Melbourne Water is the lead agency and has worked in partnership with Traditional Owners and 14 responsible public entities that form the Yarra Collaboration Committee to oversee the Plan’s development and is now responsible for implementation.

Under the *Yarra River Protection (Wilip-gin Birrarung murron) Act 2017* (the Act), Melbourne Water reports annually to the Birrarung Council on implementation of the Plan. The Birrarung Council, as the ‘voice of the River’, then provides their assessment on implementation to the Minister for Water. Both reports are tabled in Parliament.

This 10-year plan is the first of its kind for Victoria. It brings statutory planning and land and waterway management together for the first time setting out directions for future land use and development for the entire river corridor. It takes an integrated approach – across portfolios, across agencies and across the landscape – a plan that drives holistic governance without borders. The Plan identifies immediate actions for the river corridor, enables long-term collaborative management between agencies and Traditional Owners, and guides local planning.

Since the Plan’s launch in February, the priority has been on embedding the collaborative governance model and operationalising the Plan in business processes for responsible public entities and other organisations with interests in management of the Yarra.

Highlights from our first reporting period from February 2022 to 30 June 2022

Collaborative Governance

- Reviewing and re-establishing collaborative governance arrangements through reconvening the Yarra Collaboration Committee; composed of Traditional Owners and agencies with responsibilities for managing Yarra River lands. Initial feedback suggests the committee is meeting expectations for integration and knowledge sharing, providing a strong foundation for future collaborative delivery of the Plan.
- Building a strong cultural focus with Traditional Owner partnerships and perspectives, which is central to the development of collaborative governance, monitoring and evaluation and implementation planning processes.

Implementation

- Completing the Implementation Plan 2022, including the initial Activities Schedule, identifying 88 projects being undertaken to protect and enhance the river and its parklands.
- Achieving significant progress across the 40 actions of Part 1, with three delivered, 16 in progress and 21 in their planning phase. Highlights include:
 - completing the Integrated Water Management (IWM) plan for the Yarra Catchment (Action 4), which will support investment in stormwater harvesting and treatment, leading to improved environmental conditions
 - implementing a landscape scale approach to management of wetlands and billabongs in the Lower Yarra (Action 7) and working with Wurundjeri Woi-wurrung Cultural Heritage Aboriginal Corporation and researchers, to enhance knowledge, monitor and

understand ecological change in these culturally important landscapes (Action 9)

- establishing the Lower Yarra River management committee to guide river activation and infrastructure improvements (Action 38)
- preparing the planning scheme amendment to give effect to the land use framework in Part 2 of the Plan (Action 39).

Priority projects

- Significant progress has been made on the five priority projects identified in the Plan, with over \$2.7 million funding from the State Government.
- Priority projects contribute to the 10-year performance objectives, recognise Aboriginal cultural values of the Birrarung and deliver a range of benefits. Significantly, they represent a shift toward collaborative management between agencies and partnership with the Traditional Owners.
- The current priority projects are:
 - **Birrarung Trial Floating Wetlands** – trials of constructed floating wetlands and riparian habitat in the city, led by Melbourne City Council.
 - **Birrarung Rangers** – a self-determined, capacity building and employment program for Traditional Owners along the Yarra River led by Wurundjeri Woi-wurrung Cultural Heritage Aboriginal Corporation.
 - **Polystyrene Pollution Program** – informing pollution reduction strategies and efforts, led by the Yarra Riverkeeper Association.
 - **Yering Billabongs** – reconnection of wetlands and billabongs in the rural floodplain at Yering, led by Yarra Ranges Council.
 - **Yarra Flats** – involves environmental watering and restoration of remnant billabongs in the suburban reach, led by Melbourne Water.

Monitoring and Evaluation

- Co-development with the Birrarung Council of an agreed 'best practice' monitoring and evaluation framework focused not only on delivery of actions, but assessment of the effectiveness of the collaborative governance arrangements in guiding management of the Birrarung as one living and integrated natural entity.

As we progress the Plan, partnership with the Wurundjeri Woi-wurrung and Bunurong Traditional Owner, and their sharing of their knowledge and culture, partnerships will continue to be central to the success of actions. Implementation of the Plan will also focus on activities that embed long-term change toward co-management of the river and its parklands.

The title 'Burndap Birrarung burndap umarkoo', in Wurundjeri Woi-wurrung language means 'good for the Yarra is good for all', reflecting the strong partnership with Traditional Owners in the Plan's development. Throughout implementation, Melbourne Water and the Yarra Collaboration Committee are committed to ensuring cultural safety and will build cultural competence to enable co-management of the river and its parklands.

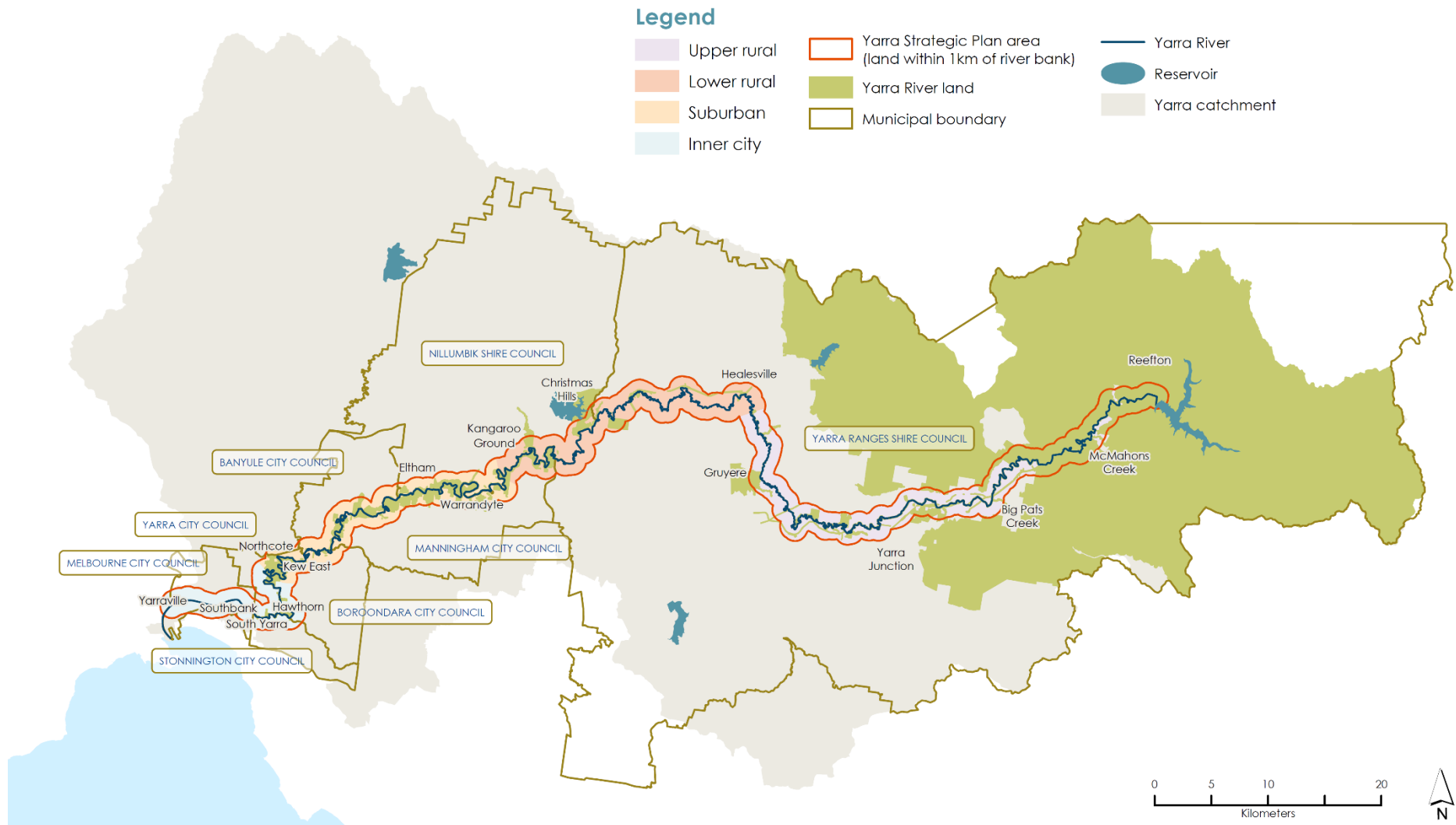


Figure 1 Map of Yarra Strategic Plan area showing Yarra River land

About the Plan and its implementation

The Plan is a whole-of-government initiative, co-designed with the Traditional Owners of the Birrarung and the responsible public entities. As a 10-year plan, it provides an overarching policy and planning framework in relation to the Yarra River and land in its vicinity. Importantly the Plan sets out a new collaborative governance structure for the river, with state and local government agencies working with Traditional Owners to put the interests of the river and its lands at the heart of decision making.

The Traditional Owners, Wurundjeri Woi-wurrung and Bunurong people have always considered the Birrarung to be the lifeblood of Country. It flows across organisational boundaries, encompassing the land and waters of the river as well as its unique ecosystems. The Act and the Plan return to this holistic view – requiring focus, care and reverence across all reaches of the river. Agreement to collaborate in decision-making, align investment in actions, and to use statutory planning mechanisms, including the land use framework, will cement this holistic view of the river as one living and integrated natural entity.

Under the guidance of the Birrarung Council, the ‘voice of the River’, implementation of the actions and land-use directions in the Plan will bring to life the 50 year community vision for the Yarra and deliver on the Birrarung Water Policy, *Nhanbu narrun ba ngargunin twarn Birrarung – Ancient Spirit and Lore of the Yarra* articulated by the Wurundjeri Woi-wurrung people.

The responsible public entities and six committees of management for Yarra River land¹ endorsed the Plan in 2021, which was approved by the Minister for Water, and became operational on 24 February 2022.

The responsible public entities continue to meet their own obligations and operational requirements, while collaborating with other entities in delivering the Plan.

We, the Woi-wurrung, the First People, and the Birrarung, belong to this Country. This Country, and the Birrarung are part of us.



The Birrarung is alive, has a heart, a spirit and is part of our Dreaming. We have lived with and known the Birrarung since the beginning. We will always know the Birrarung.

Bunjil, the great Eagle, the creator spirit, made the land, the sky, the sea, the rivers, flora and fauna, the lore. He made Kulin from the earth. Bunjil gave Waa, the crow, the responsibility of Protector. Bunjil's brother, Palliyang, the Bat, created Bagarook, women, from the water.

Since our beginning it has been known that we have an obligation to keep the Birrarung alive and healthy—for all generations to come.

Preamble of the Wilip-gin Birrarung murrion Act 2017

¹ Yarra River land includes the bed, soil and banks, and Crown and state government-owned land parcels within 500 m of a bank of the river as mapped in Figure 1. Yarra River land does not include private land.

Reporting requirements

Responsible public entities must prepare a report on their implementation of the Plan over the reporting period², and provide that report to the lead agency. In turn, the lead agency prepares an annual report from the information provided, and provides it to the Birrarung Council to assist them in their reporting to the Minister for Water on implementation of the Plan.

The Birrarung Council has provided guidance on their expectations for reporting, which provides a framework for tracking and reporting progress towards collaborative governance and organisational commitment.

This is the first report for implementation, covering the period from 24 February 2022, when the Plan was approved by government, through to 30 June 2022.

The purpose of this Annual Report is to report progress, demonstrate accountability and inform ongoing implementation of the Plan. The Annual Report is supported by a monitoring and evaluation framework that considers the impact, effectiveness and efficiency of the Plan, in relation to collaborative governance (and organisational commitment) and delivery of the Plans four performance objectives.

As the first report, this report will be built on in future years; covering the full financial year and importantly, clarifying the connection between reporting, monitoring and evaluation processes.

Content for this report is drawn from information gained during development of the Plan and through progress reporting by the responsible public entities.

Governance structure

The governance structure (Figure 2) was established for implementing the Plan. It builds and improves on the structure established for the development phase of the Plan and supports partnerships with Wurundjeri Woi-wurrung and Bunurong Traditional Owners and functions of the Birrarung Council.



Figure 2 Governance structure

Birrarung Council

The Birrarung Council has been appointed to provide independent advice to the Victorian Government on, and advocate for, protecting and improving the Yarra River.

As an independent and authentic voice of the Yarra, the Birrarung Council champions the interests of the river as one living and integrated natural entity, guided by the voice and knowledge of Traditional Owners as the custodians of the river and its lands.³

² A notice from the Water Minister published in Government Gazette, 24 February 2022, changed the reporting period from 6 to 12 months.

³ Birrarung Council mission statement <https://www.water.vic.gov.au/birrarung-council/about-us/about-the-council>

Traditional Owner Partnerships

There are two registered Aboriginal parties recognised under the *Aboriginal Heritage Act 2006* covering Country that the Yarra River flows through. The **Wurundjeri Woi-wurrung Cultural Heritage Aboriginal Corporation** cover the majority of the Yarra, Birrarung, from the mountains to the city. The **Bunurong Land Council Aboriginal Corporation** covers the lower reaches of the Yarra estuary from the city out to Narm (Port Phillip Bay)⁴.

Acknowledging and empowering the role of Wurundjeri Woi-wurrung and Bunurong people as custodians of the river and its lands, with a self-determined role in planning and decision making on their Country is a core element of the Plan's implementation. Development of this role will take time and needs to be informed and directed by the Wurundjeri Woi-wurrung Cultural Heritage Aboriginal Corporation and the Bunurong Land Council Aboriginal Corporation.

In addition to project delivery, during 2022-23 we will focus on fostering cultural safety and building the cultural competence of the Yarra Collaboration Committee, with an immediate commitment to organise on-Country cultural awareness training.

Wurundjeri Woi-wurrung Cultural Heritage Aboriginal Corporation

The Wurundjeri Woi-wurrung Cultural Heritage Aboriginal Corporation had significant involvement in developing the Plan. They wrote the *Custodianship of the Birrarung* chapter in the Plan, and have provided draft partnership protocols for implementing the Plan. They are listed as partners in 39 of the 40 actions in Part 1, and similarly many of the projects listed in the Activities Schedule include the Wurundjeri as project partners for activities on their Country.

The partnership protocols will inform implementation, with a focus on enabling an ongoing cycle of involvement between responsible public entities and the Wurundjeri Woi-wurrung Cultural Heritage Aboriginal Corporation, to:

- Support responsible public entities in developing their understanding of the rights and responsibilities of Wurundjeri Woi-wurrung people to Country (land, water, planning)
- Demonstrate to responsible public entities and the broader community the value of Wurundjeri Woi-wurrung inclusion and participation
- Support the Corporation to further engage with the community it represents including providing culturally relevant employment opportunities
- Further develop and consolidate cultural, environmental, social, political and economic relationships with water.

Bunurong Land Council Aboriginal Corporation

Melbourne Water as lead agency has initiated discussion with the Bunurong Land Council Aboriginal Corporation to confirm, through a self-determined process, their involvement in implementing actions in the Plan and their participation on the Yarra Collaboration Committee. The Bunurong Land Council were recognised as the Registered Aboriginal Party for the Yarra downstream of the City in July 2021. The Bunurong Land Council is working with individual responsible public entities on activities on their Country in the inner city.

⁴ Further detail on Victoria's statewide appointed Registered Aboriginal Parties can be found online at [Victorian Aboriginal Heritage Council](#)

Responsible public entities

The Act lists the following 14 agencies and councils as responsible public entities, each having land management responsibilities for Yarra River land.

- Yarra Ranges Shire Council
- Nillumbik Shire Council
- Manningham City Council
- Banyule City Council.
- Boroondara City Council
- Yarra City Council
- Stonnington City Council
- Melbourne City Council
- Parks Victoria
- Victorian Planning Authority
- Melbourne Water
- Department of Transport (and VicTrack)
- Department of Environment, Land, Water and Planning (DELWP)

Yarra Collaboration Committee

Representatives from Wurundjeri Woi-wurrung Cultural Heritage Aboriginal Corporation and the responsible public entities formed the Yarra Collaboration Committee to oversee the development and implementation of the Plan.

The committee is crucial in providing strategic and operational advice for implementing the Plan. It is the mechanism for collaborative governance and is considered one of the most innovative features of the Plan. In addition, it is the vehicle for ensuring collaboration and coordination across all stakeholders.

Operating under a formal arrangement, the committee presents items for discussion or decisions informed by background papers issued by the lead agency. Minutes are recorded and distributed within one week of meetings.

Committee members for 2021-22 are listed in Attachment 1. Dr Jane Doolan continues her role as the independent chair of the committee. The committee had online meetings at six-weekly intervals from February 2022.

It will move to bi-monthly meetings over the next year. A high level of attendance and participation has allowed the committee to perform to a high standard. Key outcomes from the meetings are listed in Table 1.

Table 1: Yarra Collaboration Committee meetings and key outcomes

Meeting date	Key outcomes
#26, 7 March 2022	Discussion on governance, annual planning and reporting, and terms of reference, as set out in Implementation Plan.
#27, 12 April 2022	Agreement on governance and arrangements for implementation; and discussion on implementation planning and scheduled activities to deliver on the performance objectives.
#28, 24 May 2022	Agreement to publish the Implementation Plan 2022; discussion on monitoring and reporting.

Knowledge exchange

Members of the Yarra Collaboration Committee have indicated that the committee is meeting collaboration and knowledge exchange expectations. The regular meetings have assisted in knowledge exchange and sharing experiences and opportunities. In addition, members have reported on the progress of priority projects and discussed challenges faced in delivering them.

Structure of the Yarra Strategic Plan

Comprised of two parts, the Plan aims to bring organisations together to work collaboratively towards the 50-year community vision. Part 1 of the Plan acknowledges the history of Traditional Owners and recognises their intrinsic relationship to the river. It outlines the approach for collaborative governance to manage and protect the river through shared decision-making and aligned investment across four performance objectives and accompanying actions. An important feature of the Plan is the integration with Part 2, which sets out land use directions and planning mechanisms to strengthen delivery of the objectives and actions set out in Part 1.

As set out in Figure 3, the Plan (shown in green) defines what the community want and how to deliver these outcomes. The implementation plan (in blue), developed this year, sets out how agencies will deliver on the Plan – processes and activities. This annual report provides an update on progress in delivering on the Plan (how we are going).

Yarra Strategic Plan 2022 - 2032

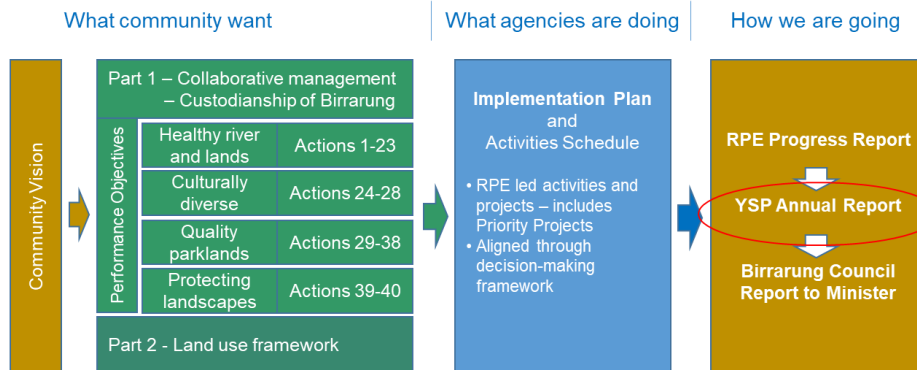


Figure 3 Process diagram for developing and implementing the Yarra Strategic Plan

Part 1 has four performance objectives representing the change the community is seeking for the Yarra over the next 10 years. These

performance objectives are supported by a series of 40 actions set out in the Plan. A summary of progress with these actions is provided in this report (see section on Status of Actions, page 18).

Part 2, the land use framework, includes a series of land use directions to inform planning controls for future land use and development across the river’s four ‘reaches’: upper rural, lower rural, suburban and inner city. The land use framework is also supported by four planning related actions that will inform and guide its implementation.

Implementation planning

In 2021, as part of the implementation planning, responsible public entities nominated 88 activities and projects either planned or being undertaken that contribute to achievement of the performance objectives. These are listed in the Activities Schedule, published in the *Implementation Plan 2022*. An update on the progress of these 88 activities is provided in **Attachment 2**.

Decision-making framework

The decision-making framework provides a process for responsible public entities to assess and evaluate proposed projects in the Yarra River corridor. It facilitates transparent and coordinated decision-making by responsible public entities, including with Wurundjeri Woi-wurrung and going forward Bunurong Traditional Owners.

The framework supports the assessment of projects against criteria based on the protection principles of the Act, aspirations of Traditional Owners, the Yarra River 50-year Community Vision and the Plan’s performance objectives. The criteria and responses to them are set out in a pro-forma that proponents complete and was included in the Implementation Plan 2022.

As part of developing the 2022 Activities Schedule, responsible public entities considered both the Yarra protection principles and the performance objectives. The Yarra Collaboration Committee also provided a forum for testing projects against the protection principles.

Currently, aspects of the protection principles are reflected in routine planning and delivery of projects through a range of in-house procedures. For example, Melbourne Water uses an evidence-based checklist to ensure impacts and potential risks to stakeholders, environment, cultural heritage and public health are identified and managed during the planning and delivery of projects. While these existing in-house approaches deliver on part of the decision-making framework, further work will be undertaken with responsible public entities in the coming year to embed the decision-making framework.

DELWP has funded the current suite of priority projects and tested these against earlier versions of the decision-making framework. The Yarra Collaboration Committee supported the projects, which is also a requirement of the decision-making framework.

Melbourne Water as lead agency will facilitate further work to embed the decision-making framework in all Yarra-related activities and projects. This will include development of guidance material and processes to track and measure alignment with the intent of the Plan.

Monitoring and evaluation framework

Over the next 10 years, the success of the Plan hinges on a commitment to transformative and collaborative governance. A monitoring and evaluation framework is essential to measure and inform progress and to ensure the river's management and protection as one living and integrated natural entity.

Melbourne Water, in partnership with the Yarra Collaboration Committee and Birrarung Council, has developed the monitoring and evaluation framework to guide the collection and analysis of the data needed to assess the impact, effectiveness and efficiency of the Plan. The framework has two core focus areas:

- **Collaborative governance** – assessing the systemic change towards collaborative governance and shared decision making across agencies and Traditional Owners

- **Delivery of performance objectives** – assessing the implementation of the Plan against the delivery of the four performance objectives.

Collaborative governance

The first focus area is to assess the progress of systemic change required to achieve the full intent of collaborative governance and Custodianship of the river.

Each year, responsible public entities are required to complete a self-assessment based on a theory of change model. The Birrarung Council, as the 'voice of the river' provided advice to the lead agency and the Yarra Collaboration Committee on how they would like to evaluate delivery of the Plan against three key outcomes:

- organisational practice reflects a sustained commitment to implement the Plan
- cross-organisational collaborative planning and management are sustained
- Traditional Owners are decision makers and delivery agents on their Country alongside local and state government agencies.

Embedding change, and realising the full benefits of this shift is expected to be achieved over the life of the Yarra River 50-year community vision.

Delivery of performance objectives

To complement the annual self-assessment, Melbourne Water, as the lead agency, will undertake a comprehensive three-yearly evaluation to inform a review and adjustment of the Implementation Plan. The timing and how it fits with other reporting and evaluation processes are set out in Figure 4.

Within this evaluation process, key elements of the 50-year community vision and priorities and values nominated by the community are captured in nine success measures, which sit underneath the Plan's four performance objectives. A range of indicators will be used to evaluate these success measures (see the conceptual layout in Figure 5).

Melbourne Water will leverage the extensive science and data evaluations (e.g. State of the Yarra and its Parklands and Healthy Waterways mid-term review, both due 2023) to avoid duplication and ensure efficient use of resources to report how the Plan has improved the condition of the Yarra.

The data used to inform the monitoring and evaluation is gathered from a range of sources, each collected at different timescales. Due to the frequency and timing for making this data available, reporting on these indicators will be contained in the three-yearly evaluation, due late 2023.

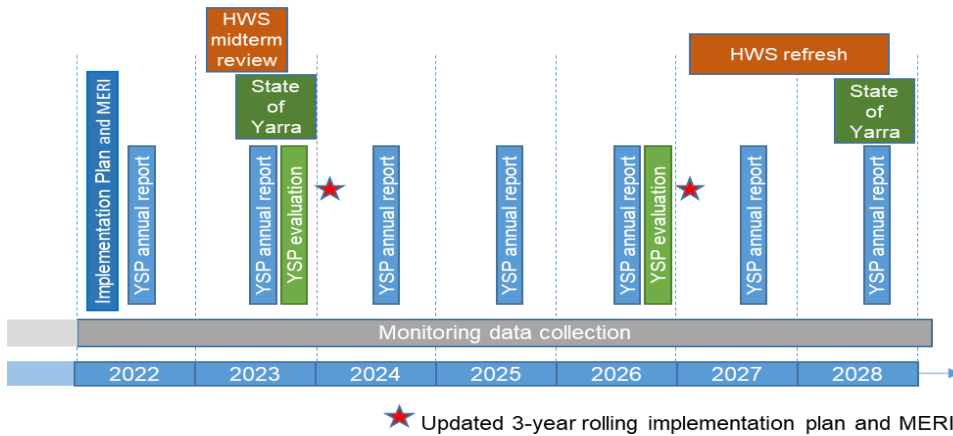


Figure 4: Timeline for monitoring and evaluation and alignment with other reporting activities

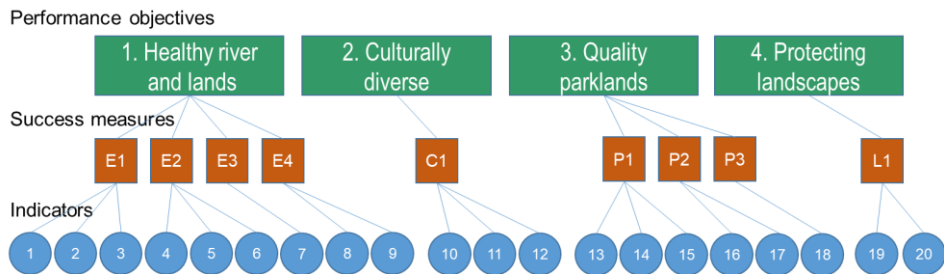


Figure 5 Nine success measures link performance objectives to indicators

Implementation priorities in 2022

The first five months of implementation built a strong foundation to embed the business processes for responsible public entities and other interested organisations.

Outcomes delivered in 2022 supported the transition to the implementation phase, including:

1. Reviewing and re-establishing governance arrangements, in particular reconvening the Yarra Collaboration Committee
2. Preparing the Implementation Plan 2022, which includes:
 - governance arrangements
 - annual planning and reporting cycle
 - outline of the implementation planning process
 - initial Activities Schedule
 - guidance for the decision-making framework
 - draft partnership protocols with Traditional Owners
 - updated terms of reference for Yarra Collaboration Committee
3. Preparing and initiating the monitoring and evaluation framework, including working with Birrarung Council on tools to assess transformational achievements
4. Developing the scope of each of the 40 actions in Part 1 and actions in Part 2 – land use framework.

Melbourne Water, as lead agency, coordinates and tracks progress of the 40 actions listed in Part 1 of the Plan, and implementation of the land use framework and associated actions in Part 2 of the Plan. Melbourne Water

also tracks progress of projects listed in the Activities Schedule, including the initial five priority projects identified in the Plan.

Priority projects

Significant progress was made on the five priority projects. These projects, which exemplify modern river and land use management, and partnership with the Traditional Owners, received over \$2.7 million funding from the State Government.

These priority projects contribute to the 10-year performance objectives, recognise and celebrate Aboriginal heritage, knowledge and cultural values, while delivering a range of benefits to realise the protection of the river as one living and integrated natural entity. These priority projects represent a shift toward collaborative management between agencies and partnership with the Traditional Owners and are on track to deliver significant change across the Plan area.

The current priority projects are:

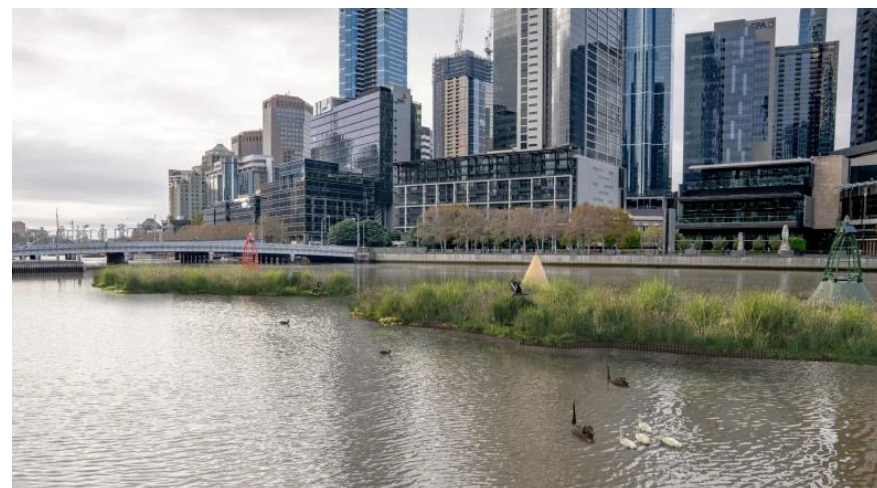
- Birrarung Trial Floating Wetlands – trials of constructed floating wetlands and riparian habitat in the city, led by the Melbourne City Council.
- Polystyrene Pollution Program – informing pollution reduction strategies and efforts, led by the Yarra Riverkeeper Association.
- Birrarung Rangers Project – a self-determined, capacity building and employment program for Traditional Owners along the Yarra River led by Wurundjeri Woi-wurrung Cultural Heritage Aboriginal Corporation.
- Yering Billabongs Project – reconnection of wetlands and billabongs in the rural floodplain at Yering, led by Yarra Ranges Council.
- Yarra Flats Project – involves environmental watering and restoration of remnant billabongs in the suburban reach, led by Melbourne Water.

Birrarung Trial Floating Wetlands

Achieved to date	Detailed designs
Upcoming milestone	Installation of three trial sites in late 2022
Estimated delivery	Late 2023

Led by Melbourne City Council, the project will improve the community's connection to the river and the environment by providing places of refuge and learning in the bustling centre of the city. While ensuring continued safety in navigation on the river for commercial and recreational users, the wetlands will test the potential to improve water quality and provide habitat in areas of the river with concrete banks and limited biodiversity.

The project is well progressed, with designs prepared for the moored wetlands and installation of trials at three sites in the city planned for late 2022. Wildlife monitoring has commenced at the proposed sites and control sites to support evaluation of the wetlands.



Artist's impression of moored wetlands enhancing biodiversity in the city (used for consultation only)

Polystyrene Pollution Program

Achieved to date	Release of the Polystyrene pollution report
Upcoming milestone	Industry engagement and education
Estimated delivery	Ongoing

Led by the Yarra Riverkeeper Association, the project is building a stronger evidence base for polystyrene pollution to inform education and engagement programs targeted at both community and industry. The release of the Polystyrene pollution report in April 2022 introduced new data and recommendations to drive action on reducing pollution in the river.

The 'Polypus' sculpture, featured at the launch of the Yarra Riverkeeper's Polystyrene Pollution Report, is a story about recycling and education. A large lump of polystyrene was picked up from the banks of the river and given to a sculptor to repurpose. The platypus is an iconic species of the Yarra, with populations threatened by the presence of litter, which can be improved through education and changing people's behaviour.



The 'Polypus' sculpture, from waste to Art

Birrarung Rangers

Achieved to date	Preliminary project scoping
Upcoming milestone	Delivery of Phase 1 Implementation Plan
Estimated delivery	Ongoing

The Birrarung Rangers project is led by the Wurundjeri Woi-wurrung Cultural Heritage Aboriginal Corporation. The project will build on the existing work of their natural resource management team, establishing a pathway for building capacity and capability for Birrarung Rangers. In 2021-22, the team has been working with Elders to develop the scope of the project and will complete their project plan in late 2022.

Yering Billabongs

Achieved to date	Functional design for re-engaging floodplains and billabongs Confirm land management arrangements Landscape designs
Upcoming milestone	Cultural Values Assessment (June 2023)
Estimated delivery	June 2024

The Yering Billabongs project sees the 100 hectare Crown land reserve on the Yarra River floodplain at Yering returned to public management and restored to functional billabongs. A shallow meadow will be created across the landscape which will hold water for four months of the year, providing natural habitat and water quality treatment, while also improving habitat connectivity to the neighbouring Spadoni's Reserve.

Led by Yarra Ranges Council, in partnership with Wurundjeri Woi-wurrung Cultural Heritage Aboriginal Corporation, Melbourne Water and Zoos Victoria this legacy project sets a leading example of the commitment, collaboration and shared management with Wurundjeri Woi-wurrung people that the Plan seeks to achieve.

Key aspects of the project delivery includes floodplain restoration, a firestick project pilot site, a cultural values assessment, delivery of interpretive signage to share stories and Aboriginal cultural site history and protection of the river’s iconic and endangered biodiversity, such as the nationally significant, Buxton Gum.

Key outcomes of this priority project include:

- enhanced environmental, cultural and landscape value associated with reengaged billabong systems
- establishing cultural burn practices and land management
- improved understanding of the tangible and intangible cultural values of the area and supporting Wurundjeri Woi-wurrung to improve cultural awareness within the community through interpretive signage
- improved water quality entering the Yarra River; benefiting aquatic recreation, fishing and downstream water users
- increased open space available for passive recreation in the Yering/Yarra Glen area
- capacity building for a new Friends of Group through Landcare



Spadoni’s Reserve, adjacent to Yering Billabongs site

Yarra Flats

Achieved to date	Successful trial: watering of the billabongs Detailed designs for constructed wetland
Upcoming milestone	Environmental watering of Annulus Billabong (October 2022) Feasibility study and cost benefit analysis for a permanent watering solution at Annulus Billabong (2023)
Estimated delivery	June 2024

Popular with walkers, cyclist, picnickers and birdwatchers, Yarra Flats Park features 85 hectares of pastoral and heritage landscapes, natural bushland, wetlands, abundant birdlife and iconic picnic areas. Of particular significance is the Yarra Flats billabong complex; a landscape that continues to be important for Wurundjeri Woi-wurrung people and features in their dreamtime stories.



Annulus Billabong

Much of this area has been subject to land use change. Together with changes in the wider catchment, these landscapes have experienced significant alterations to their natural water availability and wetting and drying cycles. These alterations have resulted in significant impacts to the cultural, liveability and ecological function of the billabongs.

Led by Melbourne Water, in partnership with Parks Victoria, Wurundjeri Woi-wurrung Cultural Heritage Aboriginal Corporation, Banyule City Council, Friends of Yarra Flats Park and the Victorian Environmental Water Holder,

this transformative project delivers on the four performance objectives set out in the Plan and, importantly, illustrates the shift towards collaborative governance needed to ensure the long term protection of the river.

Of the billabongs, Annulus and Banksia have been identified as the most important wetlands of the park for immediate management. Key outcomes of this priority project include:

- on-Country engagement with Narrap Team and the University of Melbourne to undertake flora and fauna monitoring to assess the cultural and environmental impact of investment
- stormwater treatment of the surrounding catchment
- delivering water for the environment to support local flora and fauna, cultural and liveability values of Annulus Billabong
- enabling a model of self-determination, where Wurundjeri Woi-wurrung identify and lead elements of the project delivery
- supporting Wurundjeri Woi-wurrung to improve cultural awareness within the community; connecting indigenous riparian and wetland knowledge with the broader community
- enhancing the visitor experience and community engagement.



Annulus Billabong

Organisational commitment

Since endorsing the Plan in 2021, responsible public entities have made an organisational commitment to implementation through ongoing collaboration, sharing of knowledge and partnering with Traditional Owners. Commitment by organisations, both internally and externally, varies in response to operational requirements however, all responsible public entities have plans to grow their organisational commitment in the year ahead.

After its launch, the Plan was promoted by responsible public entities through websites and by providing printed copies at their offices and local libraries. Internal communications were also used to increase awareness and commitment to the Plan's implementation including, the vision and acknowledgment of the collaborative effort required to draft and implement the Plan.

Internal governance arrangements are being established across organisations to assist in the implementation of the Plan. These range from project control boards and project working groups, to regular items on meeting agendas for management teams to discuss and identify opportunities to deliver on the intent of the Plan.

As new strategies and operational plans are being developed, organisations are ensuring that reference is made to the Plan's performance objectives and land use framework. For example, Parks Victoria have included the following action in the Park Planning and Policy Directorate's Annual Plan 2021-22: 'Provide strategic planning support for the Yarra Strategic Plan implementation of Parks Victoria activities.' The same will be in the Directorate-level plan for the following financial year.

Similarly, councils have indicated they will provide internal communication, collaboration and cross organisational support to implementation, monitoring, evaluation and reporting commitments, including application of the decision-making framework.

Status of Actions

Part 1 – collaborative actions

The four performance objectives set out in Part 1 of the Plan are supported by a series of 40 actions to be carried out over the next 10 years. Table 2 provides a summary of the status of these actions across the four performance objectives.

Many of the actions align with other strategies and plans such as the **Regional Catchment Strategy** and **Healthy Waterways Strategy**. This has allowed significant progress to be achieved despite the relatively short period since commencing implementation of the plan in February 2022.

This includes:

- Completing the Integrated Water Management plan for the Yarra Catchment (Action 4), which will support investment in stormwater harvesting and treatment, improving environmental conditions in the river and parklands in urban areas
- Implementing a landscape scale approach to management of wetlands and billabongs in the Lower Yarra (Action 7) and working with Wurundjeri Woi-wurrung Cultural Heritage Aboriginal Corporation and researchers, to enhance knowledge, monitor and understand ecological change in these culturally important landscapes (Action 9)
- Establishing the Lower Yarra River management committee, with cross agency representation to guide river activation and infrastructure investment and improvements (Action 38) and implementation of the commercial berthing plan (Action 36)
- Preparing the planning scheme amendment to give effect to the land use framework in Part 2 of the Plan (Action 39).

Actions in the planning phase, mostly reflect their dependence on other actions or external activities to occur first. For example, Action 40 is about setting land use planning goals and monitoring changes in land use, which is reliant upon completion of Action 39 to recognise the Plan and its land use framework in local and state planning policy. Similarly, Action 34, conducting a strategic assessment of infrastructure and services in the Yarra's parklands, depends on developing agreed standards for parklands, an outcome of Action 29. Action 29 will itself be an output from development of a Landscape Scale Management Plan for Yarra Valley parks, being undertaken by Parks Victoria.

Actions in the plan are categorised into short, medium and long term actions. As a result, some actions are planned to be undertaken in the middle to later phase of this 10-year plan.

Further detail on the status of the 40 actions and their timeframe is provided in Table 4.

Table 2: Summary of action status across performance objectives

Performance Objective	Number of actions	Delivered	In progress	Planning
1: Healthy river and lands	23	1	11	11
2: Culturally diverse	5	0	1	4
3: Quality parklands	10	2	3	5
4: Protecting landscapes	2	0	1	1
Totals	40	3	16	21

Part 2 – land use framework

The Plan’s land use framework provides broad direction for future land use and development throughout the Yarra River corridor. By guiding land use and development on both public and private land, the river and its values can be protected, which delivers on the performance objectives in Part 1.

DELWP Planning have prepared the planning scheme amendment to give effect to the land use framework. This includes updating Clause 12.03-1R ‘Yarra River Protection’ of the Victoria Planning Provisions, translating relevant land use directions into planning schemes, and having Burndap Birrarung burndap umarkoo referenced as a background document. The amendment will be considered by the Minister for Planning in due course.

The Plan’s land use framework is also given strong effect through planning scheme amendment VC197, which was gazetted by the Minister for Planning in April 2021 and affects the Banyule, Boroondara, Manningham, Nillumbik, Stonnington and Yarra City planning schemes. VC197 introduced permanent and consistent planning overlays to manage development and protect the Yarra’s landscape within the urban areas, prescribing maximum building heights and minimum development setbacks, together with tougher vegetation removal controls for new development.

To further contribute to implementation of the land use framework, DELWP is finalising the Yarra River – Bulleen Precinct Land Use Framework Plan to bring to life the community’s vision for a healthy river and environment, a thriving arts and cultural scene, and connected people and places. The plan will align with the broader land use framework established in Burndap Birrarung burndap umarkoo, while providing a more detailed framework for future land use and development through this iconic part of the river’s suburban reach. The Framework Plan will be released by the Victorian Government in 2022.

The land use framework includes a further four land use planning related actions to be delivered through a program of state-led projects in partnership with the Yarra Collaboration Committee. As indicated in Table 3, these actions are in the process of being scoped and considered for future resourcing.

Table 3: Land use planning related actions to support implementation of the land use framework over the next 10 years

Planning related action	Description
1. Planning controls from Warrandyte to Warburton	Using a landscape assessment approach, investigate development of new controls to streamline planning protections for the lower and upper rural reaches between Warrandyte and Warburton.
2. Coordinated approach to landscape design and native planting	Prepare guidelines for landscape design and native planting at the river’s interface to deliver on the requirements of the planning controls.
3. Strengthening protections of heritage values	Investigate new or amended planning mechanisms to protect sites of significance and protect Aboriginal tangible and intangible cultural values and other cultural and heritage values.
4. Strengthening protections for riparian and biodiversity values	Investigate new or amended planning mechanisms to provide protection for the four ‘new areas for protection’ identified in the Plan. Depending on the outcome, consider other areas of high biodiversity value requiring protection.

Table 4: Action Tracker, showing the status of actions and nominated lead organisation (note: action text has been shortened for ease of reporting)

Action	Status	Timeframe	Lead Agency	Status comment
Performance objective 1: A healthy river and lands				
Water quality				
1 Develop a place-based pilot project (in an area where stormwater is threatening Yarra health and amenity) to explore innovative re-use of stormwater...	planning	4-7 yrs	MW	Aligns with Yarra catchment IWM plan
2 Implement a Yarra-specific stormwater awareness and behaviour change campaign targeted at reducing litter and contamination entering the Yarra River.	planning	1-3 yrs	MW	Aligns with Yarra catchment IWM plan
3 Increase education, awareness and regulatory compliance to reduce pesticides and chemicals entering the river...	planning	1-3 yrs	MW	Aligns with action for the middle Yarra catchment in Melbourne Water's Drinking Water Quality Strategy
4 Develop the integrated water management plan (including bicultural approaches) for the Yarra Catchment...	delivered	1-3 yrs	DELWP	Yarra catchment IWM plan completed, and associated Action Plan under development (Activity 10 in Attachment 2)
5 Develop an integrated program to improve management of domestic wastewater in non-sewered areas (includes places serviced by septic tanks)...	in progress	4-7 yrs	DELWP	Onsite Wastewater Steering Committee activities are informing this action
Billabongs and wetlands				
6 Investigate options to restore billabongs and wetlands on private and public land by using water for the environment to mimic natural water cycles and undertaking complementary land and water management works.	in progress	1-3 yrs	MW	Mapping of wetlands has commenced
7 Work with partners, primarily Wurundjeri Woi-wurrung, VEWH and Parks Victoria, to implement a landscape scale approach to improving wetlands and billabongs for the Lower Yarra billabongs...	in progress	1-3 yrs	MW	Methodology developed and being tested
8 Support the aspirations of the Wurundjeri Woi-wurrung people to pursue water justice for their people and Country...	in progress	1-3 yrs	WWCHAC	Aligns with Nhanbu narrun ba ngargunin twarn Birrarung
9 Work with Wurundjeri Woi-wurrung to enhance knowledge, monitor and understand ecological change in prioritised Lower Yarra billabongs which have received environmental water.	in progress	1-3 yrs	MW	Monitoring undertaken to assess benefits of seasonal watering
Habitat connectivity				
10 Undertake vegetation works to strengthen terrestrial and aquatic habitat corridors to improve biodiversity...	in progress	4-7 yrs	MW	Aligns with HWS & RCS performance objectives
11 Increase and enhance the extent and quality of urban greening in the inner city reach on public and private land downstream of Gardiners Creek...	planning	1-3 yrs	MW	Aligns with HWS & RCS performance objectives
12 Follow the goals and principles as set out in Protecting Victoria's Environmental Biodiversity 2037 for habitat and species conservation planning.	in progress	1-10 yrs	MW	Aligns with HWS & RCS performance objectives
13 Explore and support the use of incentive mechanisms to build skills, knowledge and capacity in restoring landscape function...	in progress	4-7 yrs	MW	Aligns with HWS & RCS performance objectives

Action	Status	Timeframe	Lead Agency	Status comment
14 Promote the use of conservation covenants to protect priority conservation values on private land as well as enhancing habitat connectivity...	planning	4-7 yrs	DELWP	Aligns with HWS & RCS performance objectives
15 Plan and undertake terrestrial and aquatic flora and fauna assessments to ascertain where opportunities exist to reintroduce and restore native plants and animals...	in progress	4-7 yrs	MW	Assessments undertaken for Yarra Flats billabongs
16 Develop and pilot Wurundjeri Woi-wurrung flora and fauna assessments as critical planning tools for future management of the catchment...	planning	1-3 yrs	WWCHAC	Aligns with Birrarung Rangers priority project
Native Fish				
17 Invest in habitat restoration and environmental watering to: increase native fish, ..., and improve opportunities for recreational fishing and cultural practices...	in progress	1-3 yrs	MW	Monitoring report and review in preparation
18 Work in partnership with angling groups to develop and implement a community education program on protection of native fish...	planning	8-10 yrs	DELWP	Aligns with action 17
19 Wurundjeri Woi-wurrung CHAC to lead and explore the feasibility of research projects identifying current extents, habitat needs, and best practice recovery programs for culturally valued freshwater aquatic species...	in progress	8-10 yrs	WWCHAC	Working with researchers from ARI
Pest plants and animals				
20 Adopt a multi-agency collaboration and investment approach to management of invasive animals and plants...	planning	4-7 yrs	DELWP	Peri Urban Deer Control Strategy working group is progressing activities that align with action 20 and 21
21 Build capacity of the Wurrundjeri Narrap team to manage and eradicate deer...	planning	1-3 yrs	WWCHAC	
Climate change				
22 Deliver an interactive education program along the river corridor to enhance awareness and understanding around climate change and adaptive capacity...	planning	1-3 yrs	DELWP	Aligns with CC Adaptation Strategy for Greater Melb
23 Map key risks to the Yarra for climate change and develop a climate change adaptation and resilience action plan...	planning	1-3 yrs	DELWP	Aligns with CC Adaptation Strategy for Greater Melb
Performance objective 2: A culturally diverse river corridor				
Cultural heritage				
24 Develop, or where existing, enhance interpretive and educational programs for sites that have...	planning	4-7 yrs	DELWP	Workplans to be developed in consultation with TOs
25 Deliver interactive educational programs that include storytelling about the rich culture and heritage of the Yarra River...	planning	4-7 yrs	DELWP	Workplans to be developed in consultation with TOs
26 Support a program of cultural value studies by the Traditional Owners for the Yarra...	in progress	1-3 yrs	WWCHAC	Bulleen-Banyule Flats study completed in 2021, two further studies underway
27 Explore with the Traditional Owners, the possibility of registering the Yarra as a cultural landscape.	planning	4-7 yrs	WWCHAC	Workplans to be developed in consultation with TOs
28 Develop a holistic heritage assessment to understand historic heritage values...	planning	4-7 yrs	DELWP	

Action	Status	Timeframe	Lead Agency	Status comment
Performance objective 3: Quality parklands for a growing population				
Park management				
29 Plan, design, and manage the river parklands as one living and integrated natural entity...	planning	1-3 yrs	PV	Aligns with parks landscape scale management plan in development
30 Develop, with Traditional Owners, a consistent conservation, cultural and visitation brand identity for the Yarra and its parklands...	planning	1-3 yrs	PV	
31 Establish formalised partnership agreements (including resourcing) with Wurundjeri Woi-wurrung CHAC and TOs to manage the parklands...	planning	1-3 yrs	PV	
32 Investigate locations and options for improved access to the Yarra and its parklands...	planning	4-7 yrs	PV	
33 Investigate opportunities to improve and extend the area of parklands and deliver on priorities for acquisition...	in progress	8-10 yrs	DELWP	
Park infrastructure				
34 Conduct a strategic assessment of infrastructure and services in the Yarra's parklands...	planning	1-3 yrs	PV	Aligns with parks landscape scale management plan in development
35 Consider green infrastructure investment and solutions at the local and landscape scale within parklands...	planning	1-3 yrs	PV	
River activation				
36 Develop a 10-year berthing strategy for the lower Yarra River.	delivered	1-3 yrs	PV	Strategy developed and being implemented
37 Investment in a comprehensive dredging operation and ongoing maintenance dredging of the river to ensure boats and vessels can move safely...	in progress	4-7 yrs	PV	Program developed and being implemented
38 Establish a Lower Yarra River management committee to guide commercial berthing, events and activation...	delivered	1-3 yrs	PV	Committee established in Jun'22
Performance objective 4: Protecting the natural beauty of the Yarra River corridor				
Landscapes and views				
39 Protect the river's landscapes and views through improved planning and management of the river corridor and incorporation of the Yarra Strategic Plan land use framework into local and state planning policy.	in progress	1-3 yrs	DELWP	Preliminary work undertaken
40 Set land use planning goals and monitor changes in land use...	planning	8-10 yrs	DELWP	Dependent on approval of PS amendments

Lead Agency abbreviations: Department of Environment, Land, Water and Planning (DELWP), Melbourne Water (MW), Parks Victoria (PV), Wurundjeri Woi-wurrung Cultural Heritage Aboriginal Corporation (WWCHAC).

Other abbreviations: Integrated Water Management (IWM), Healthy Waterways Strategy (HWS), Regional Catchment Strategy (RCS), Arthur Rylah Institute (ARI), Climate Change (CC), Traditional Owners (TO), Planning Scheme (PS)

Status of Activities

As a starting point for implementation, responsible public entities nominated 88 activities and projects that were either planned or being undertaken that contribute to the performance objectives. These were listed in the Activities Schedule, which was published in the [2022 Implementation Plan](#). The five priority projects listed in Part 1 of the Plan (and described earlier), are included in the Activity Schedule.

As shown in Table 5, 32% of the activities listed were delivered, 54% are in progress and 14% are being planned. Most of the projects in progress were planned to be delivered over multiple years, and are expected to be completed in the next 1-2 years. Several projects that are still in the planning phase were delayed due to COVID impacts on consultation.

The lower rural reach has the lowest number of projects listed (5), contrasting with the suburban reach which has the most (33). The balancing of investment in activities along the river will be discussed with the Yarra Collaboration Committee as part of the implementation planning process.

As previously mentioned, due to the timing of the release of the decision-making framework, the framework had limited influence on the selection of these projects. Moving forward, responsible public entities are committed to using the decision-making framework when planning new projects; guiding the consultation, planning, design, and delivery of outcomes for the Yarra.

Brief descriptions and progress updates on the 88 activities is provided in **Attachment 2**.

Table 5: Summary of activity status across reaches

Reach	Number of activities	Delivered	In progress	Planning
Upper rural	11	5	4	2
Lower rural	5	1	3	1
Suburban	33	10	18	5
Inner city	22	9	10	3
Whole of river	17	3	13	1
Totals	88	28 (32%)	48 (54%)	12 (14%)

Highlights from 2021-22

Seasonal Watering

The 2021-22 Seasonal Watering Plan⁵ for the Yarra River was delivered in full. This activity aligns with and contributes to Actions 6, 7, 8 and 9 under performance objective 1 (healthy river and lands).

At 1 June 2021, there was 34,632 ML available in the environmental water account for the Yarra Basin. Rainfall in 2021-22 was above the long-term average, and tributary inflows significantly contributed to flows throughout the year, allowing many of the river's billabongs to be inundated and the seasonal watering plan to be delivered in full.

⁵ The Seasonal Watering Plan, issued by Victorian Environmental Water Holder (VEWH) in July each year, guides environmental watering decisions in the Yarra.

Water was delivered to Annulus Billabong for the second year in a row, supporting the growth of threatened wetland plant species and providing habitat for frogs, waterbugs and birds. Works were completed at Bolin Bolin Billabong in March 2022 to better facilitate the long-term delivery of water and to reconnect this significant site to the river. Over the past five years, Bolin Bolin has been filled by a combination of natural overbank flows and water for the environment delivered via a temporary pump.

Ecological monitoring downstream of the Upper Yarra Dam was undertaken with the Wurundjeri Woi-wurrung Cultural Heritage Aboriginal Corporation's Narrap Team and the Yarra Riverkeeper. The information is being used to enhance knowledge of flow requirements downstream from the reservoir.

For the lower Yarra billabongs monitoring includes assessing the vegetation response to the environmental watering at significant billabongs, including Annulus and Bolin Bolin. This collaborative monitoring program, which is being undertaken by the Wurundjeri Narrap Team, University of Melbourne and Melbourne Water, is contributing to a shared understanding of these wetland systems. Initial results of bird surveys conducted by Birdlife Australia during 2021-22 indicate that some species respond very quickly to environmental flows. A family of day-old wood ducks was observed at Annulus Billabong only one week after watering commenced. Other notable observations include nankeen night-heron at Annulus Billabong and buff-banded rail at Birrarung Billabong.

Melbourne Water has installed real-time water quality monitoring instruments in the river at Millgrove and upgraded the water-quality monitoring buoy in the lower reaches. These complement the other four water-quality monitoring stations along the river and will inform decisions about the delivery of water for the environment.

In the lower reaches implementation of a landscape scale approach (Action 7) with partners has helped inform the watering decisions for billabongs; informing the development of the Seasonal Watering Plan.

Melbourne Water is working with the Wurundjeri Woi-wurrung Cultural Heritage Aboriginal Corporation and the Bunurong Land Council Aboriginal Corporation to develop and strengthen relationships and to increase

Traditional Owners' involvement and self-determination in the planning and delivery of water for the environment. The intent is for Traditional Owners to be active partners in the planning, delivery and monitoring of all works and deliveries of water for the environment associated with Birrarung (Yarra River), the Plenty River and Yarra billabongs, including the environmental watering program on their Country.

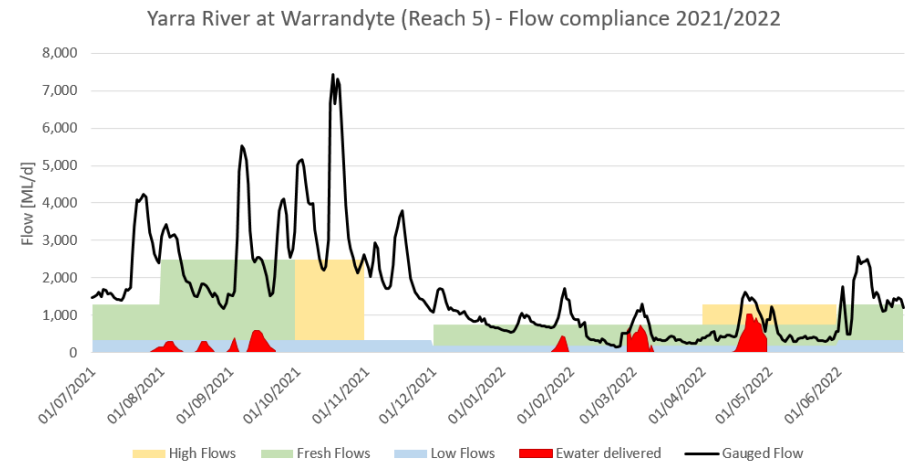


Figure 6: Yarra flows as measured at Warrandyte showing good variation and meeting environmental requirements. This is a good representative gauge located in the middle of the Yarra

Yarra fish sampling program

Fish sampling in the Yarra system is undertaken to better understand what species are present and status of their population in response to management actions and environmental threats. There are two separate programs:

- Fish Population Condition Survey conducted yearly to assess long term trends in population trajectories, eg size, age, physical health, gender, reproductive condition.
- Environmental DNA (eDNA) program to indicate what species of fish are distributed through the system.

Melbourne Water collaborated with DELWP and consultants' Jacobs to survey fish at 14 sites in the middle Yarra from just below Dights Falls to the Upper Yarra Dam, and an additional five tributaries. Surveys were conducted in late March to early April 2022 during the peak migration period to maximise the chance of capturing priority species. Surveys will continue to be conducted on a yearly basis to generate long term understanding of population trajectories and to better understand what management actions can achieve.



River blackfish (*Gadopsis marmoratus*) captured and recorded for fish monitoring program in the upper Yarra, March 2022

Consultant's EnviroDNA collected water samples from around 650 sites in the Yarra system to analyse for trace amounts of fish DNA. These annual surveys are helping to build a reliable understanding of species distribution (presence at individual sites) and range expansion/contraction. Over time this knowledge will help target management actions to improve resilience in fish species.

Fish sampling undertaken at the Dights Falls fishway in 2021 has shown that the fishway is working well and allowing fish passage in flow ranges from base flow to 4000+ ML/day.

The Greenline Project: Revitalising the north bank of the Yarra River – Birrarung

The Greenline Project led by Melbourne City Council, presents a rare and significant opportunity to transform the north bank of the river, to embrace the natural, social and cultural values associated with the river and celebrate its importance to Melbourne as a growing and liveable city. The project will connect 4 km of public waterfront between Birrarung Marr and the Bolte Bridge to create an inspiring promenade with diverse, vibrant river side destinations. Aboriginal and contemporary cultures will be celebrated, as will the area's historic values. The river and its surrounding environment will be re-established as an ecological corridor. A prioritised program of improvements is proposed, highlighting capital works opportunities and directions for advocacy and cooperation with key stakeholders and delivery partners.

The Greenline Implementation Plan was endorsed by council in December 2021, enabling progression of project and delivery planning, preparation of a draft business case to support partnerships and funding. Community and stakeholder engagement is underway for draft concepts for the first project in Birrarung Marr.

A highlight is the close consultation with Traditional Owners since the project's commencement with regular meetings convened with Wurundjeri Woi-wurrung Cultural Heritage Aboriginal Corporation as the Registered Aboriginal Party for the project area.



Artists impression of the Flinders Walk section of the Greenline Project (used for consultation only) (Project lead: Melbourne City Council)

wonguim wilam, Warrandyte

wonguim wilam, forming part of the Warrandyte River Reserve, has been developed into a new recreation precinct for people of all abilities. Over \$1 million is being invested in this project led by Manningham Council. The project, which received funding of \$300,000 through DELWP's Parks Revitalisation Grants Program, contributes to performance objective 3 (quality parklands) and performance objective 2 (culturally diverse).

wonguim wilam (pronounced as 'WON-GOOM-WIL-LUM') is a Woi-wurrung word that translates as 'Boomerang Place'. The name is not capitalised, and instead written in lower case, a convention adopted by the Wurundjeri Woi-wurrung people.

The upgrade includes a new playground, fitness equipment, additional picnic facilities, landscaping and improved pedestrian trails and car parking. The design draws on the natural and environmental values and enhances the cultural connection local Wurundjeri Woi-wurrung people have to the river.

As Committee of management, Manningham Council lead the project, in consultation with Warrandyte Lions Club, Warrandyte Community Association, Warrandyte Historical Society, Warrandyte Business Association, Country Fire Authority, Department of Transport, Wurundjeri Woi-wurrung Cultural Heritage Aboriginal Corporation and local resident representatives.

In March this year, Manningham received the 'Excellence in place naming' award at the Asia Pacific Spatial Excellence Awards. The award recognises the process taken to engage the community and for preserving First Nations cultural heritage.



Main Yarra Trail Extension to Warrandyte

Manningham Council is leading a project to extend and improve facilities along the Main Yarra Trail, with connection between Mullum Mullum Trail and Taroona Avenue, Warrandyte. The project has four stages, with construction anticipated to start in late 2022. Work has also included installation of seats, bicycle repair stations, drink fountains and improved signage.



Main Yarra Trail improvements (Project lead: Manningham Council)

Liveable Communities, Liveable Waterways

In 2021-22 Melbourne Water received 160 applications for funding for land improvements in the Yarra Strategic Plan area through their incentives program Liveable Communities, Liveable Waterways. Thirty two of the applications have progressed to contracts with land owners for delivery of 73 hectares of land improvements with a total funding of \$214,905.

The incentives program contributes to performance objective 1 (healthy rivers and land), and to Actions 10 and 13.

Data from the Liveable Communities, Liveable Waterways incentives program includes numbers of applicants, participation and area of land improved. This data will be used to evaluate the success measure of increased participation in land management activities, which is contributing to performance objective 1 (healthy river and lands). This data is also used in the Healthy Waterways Strategy to indicate organised community connection to waterways, and to show progress against the objective of increasing community participation in waterways management.



Streamside frontage program revegetation, Wesburn

Next steps

The first five months of implementation has built a strong foundation to delivering the Plan's actions and the long term process of embedding new business processes that enable the shift towards collaborative governance and protecting the river as one living and integrated natural entity.

In the year ahead the focus will be on:

- delivery of the Plan's actions and the activities through ongoing implementation planning (see below)
- strengthening partnerships with Wurundjeri Woi-wurrung Cultural Heritage Aboriginal Corporation and Bunurong Land Council Aboriginal Corporation, as Traditional Custodians with a self-determined role in governance
- fostering cultural safety and building the cultural competence of the Yarra Collaboration Committee
- operationalising the Plan across responsible public entities and strengthening the organisational commitment to collaborative governance with Traditional Owners
- improving the implementation of the decision-making framework
- further development of the monitoring and evaluation framework, including detailed mapping of indicators against existing data sources and clarifying the connection between reporting, monitoring and evaluation processes
- continuing to work with the Birrarung Council and respond to any recommendations in their 2022 Report.

Implementation planning

Further to the items above, the implementation planning process that occurs annually between September and November is a significant feature supporting implementation. As shown in Figure 7, the process will identify local and transformative projects that contribute to the Plan's performance objectives. Outputs from this process will include an updated Activities Schedule and a Projects Prospectus to inform further project opportunities when funding is available. The process will also provide an opportunity to embed the decision-making framework.

1. Implementation planning and gap analysis informed by outputs from Actions and current Activities Schedule

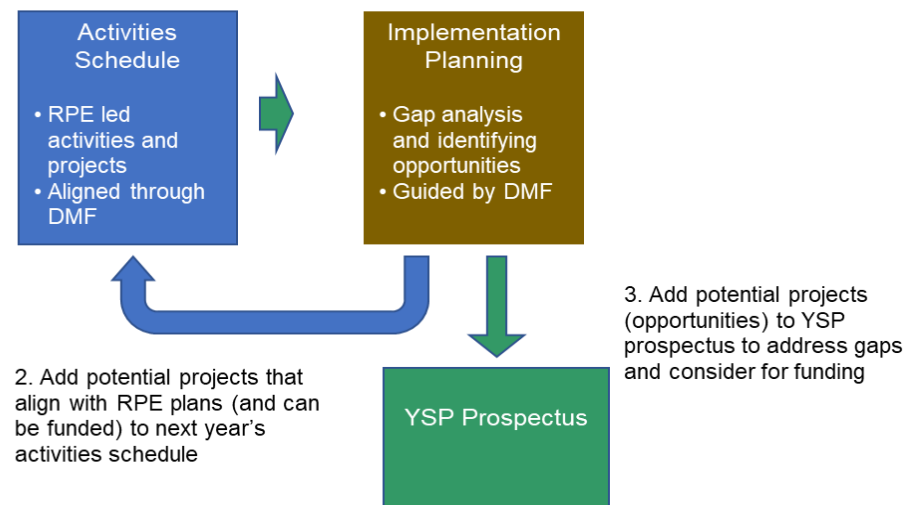


Figure 7: Outputs from the implementation planning process will include the updated Activities Schedule and YSP Prospectus

Attachment 1 – Yarra Collaboration Committee members 2021-22⁶

Organisation	Representatives
Independent chair	Dr Jane Doolan
Melbourne Water (lead agency)	General Manager Customer & Strategy
Wurundjeri Woi-wurrung Cultural Heritage Aboriginal Corporation	Manager - Water Unit
Department of Environment, Land, Water and Planning (DELWP)	Director, Resilient Cities and Towns
Parks Victoria	Director Park Planning and Policy
Department of Transport	Director, Transport & Environmental Policy
VicTrack	Planning Manager, Property Group
Victorian Planning Authority	Director Infrastructure

Organisation	Representatives
Banyule City Council	Manager City Futures
Boroondara City Council	Manager Environmental Sustainability and Open Spaces
Manningham City Council	Senior Strategic Planner
Melbourne City Council	Manager, Climate Adapted and Water Sensitive City
Nillumbik Shire Council	Manager Strategic Planning
Stonnington City Council	Manager Open Space & Environment
Yarra City Council	Manager City Strategy
Yarra Ranges Shire Council	Executive Officer Environmental Stewardship

⁶ Bunurong Land Council Aboriginal Corporation will join the Yarra Collaboration Committee from 2022-23

Attachment 2 – Activities progress tracker

The following table sets out activities and projects nominated by responsible public entities for 2021-22 that contribute to the performance objectives. This is not a complete list of works occurring in the Yarra River corridor, as it does not include works associated with major infrastructure (eg North East Link road project, Hawthorn to Richmond Sewer replacement and Upper Yarra Reservoir Dam upgrade), and much of the maintenance and minor improvement works that occur within the parklands. Similarly, the list does not provide a comprehensive list of research projects, many of which will inform actions in Part 1 of the Plan.

id	Activity/Project	Description	Reach	Primary PO#	YSP Action#	Lead agency	Project partners	Status	Progress
1	Banyule IWM projects	Stormwater harvesting, wetland and WSUD construction and maintenance (multiple sites).	Suburban	PO1	1	Banyule Council	WWCHAC	in progress	Investigations in progress
2	Banyule Billabongs Environmental Water project	With partners deliver a long-term environmental watering solution at Banyule Billabong	Suburban	PO1	6	Banyule Council	Melb Water, WWCHAC, Parks Victoria	in progress	Investigations in progress
3	Boroondara revegetation and weed control	Revegetation and weed control to biodiversity sites and remnant bushland along the Yarra River including Chandler Park, Yarra Flats Reserve and Freeway Golf Course.	Suburban	PO1	10	Boroondara Council		delivered	ongoing
4	Integrated Water Management Grants program	Competitive IWM grants process (\$7.1M made available across metro Melbourne) to help water sector, local governments and TOs work together to better plan, manage and deliver urban water projects. The 2021-22 competitive funding round closed in Dec'21. A dedicated Traditional Owner funding stream is currently on offer.	All reaches	PO1	1	DELWP	Yarra IWM Forum Partners	in progress	3 successful projects in the Yarra Catchment (outside YSP area). TO funding stream is open until Sep'22
5	Stream Frontage management program	Works on public land, dependent on landholder responses and site needs, often delivered via Melbourne Water stream frontage management program.	Upper rural	PO1	10	DELWP	Melb Water	in progress	Works at various stages enhancing biodiversity
6	Yellingbo Landscape Conservation Area 10 year Plan	Management plan for the Yellingbo conservation area, which is a network of public land reserves ranging from Upper Yarra Valley to Dandenong Ranges.	Upper rural	PO1	10	DELWP	Parks Victoria, Melb Water	delivered	Plan was finalised and published in 2021.

id	Activity/Project	Description	Reach	Primary PO#	YSP Action#	Lead agency	Project partners	Status	Progress
7	Options for increasing requirements for rainwater tanks and maintenance	DELWP is assessing options for increasing requirements for rainwater tanks in the National Construction Code and improving their maintenance, which has amongst other things, the potential to keep significant amounts of stormwater out of waterways.	All reaches	PO1	1	DELWP	VBA, Better Regulation Victoria (DTF).	in progress	Discussion paper in preparation
8	Stormwater management and IWM education	DELWP and Clearwater collaborating to educate the industry on stormwater management and integrated water management, including: · updates to Online Navigator Tool Resource Portal, to guide planning system users on stormwater planning requirements · training sessions on stormwater management, and new training and communications tools, such as IWM video.	All reaches	PO1	2	DELWP	Clearwater	delivered	Stormwater Victoria Awards for Excellence in Policy or Education: High commendation awarded to DELWP & Clearwater
9	Exploring stormwater flow reduction regulatory options	Examining costs and benefits of incorporating aspects of the stormwater flow standards from the EPA Urban Stormwater Management Guidance (Jul'21) into other regulatory frameworks, eg VPP.	All reaches	PO1	1	DELWP	Melb Water, EPA, Local Government	in progress	EPA issued final urban stormwater management guidance Jul'21. DELWP has commenced engagement on scope of cost-benefit analysis.
10	Yarra Catchment IWM Action Plan	The Action Plan will provide an agreed list of priority actions that will help the Yarra Integrated Water Management (IWM) Forum progress towards the Yarra Catchment IWM targets.	All reaches	PO1	4	DELWP	Yarra IWM Forum Partners	in progress	Currently under development, with a final draft expected late 2022
11	Managing Environmental Impacts of Domestic Wastewater	In response to 2018 VAGO audit recommendations in 'Managing the Environmental Impacts of Domestic Wastewater', DELWP and EPA are reviewing the regulatory framework for managing on-site wastewater management systems (OWMS). In line with Environment Protection Regulations 2021, EPA is developing a toolkit setting out new laws for OWMS and enforcement.	All reaches	PO1	5	DELWP	EPA	in progress	Progressing with review of Code of Practice, developing e-learning modules and risk assessment approach
12	Grants funding for water-related priority projects	Funding for existing and new projects (\$1.7 million available from 2021 – 2024)	All reaches	PO1		DELWP	Multiple	in progress	DELWP continued to support priority projects identified during development of the YSP
13	Care for your Yarra	Digital platform connecting skilled volunteers with on-demand needs from Friends Groups and local communities within the Yarra Catchment area. In addition to coordinating a growing volunteer workforce will enable training in specific issues and activities before an on-ground training session.	All reaches	PO1	2	DELWP	Yarra Riverkeeper	in progress	Complete by Sep'22

id	Activity/Project	Description	Reach	Primary PO#	YSP Action#	Lead agency	Project partners	Status	Progress
14	Westerfolds Grassland Conservation	Includes weed management, furthers the species diversity of the area and repairs fencing to control rabbits. Additionally, volunteers will receive professional training in weed identification and removal, contributing to the ongoing management of the site.	Suburban	PO1	10	DELWP	Yarra Riverkeeper	in progress	Complete by Sep'22
15	Fitzsimons Lane Upgrade of Intersections	Fitzsimons Lane intersection upgrades in Eltham and Templestowe - roads project to improve traffic flow and safety for commuters, includes drainage and revegetation works impacting Diamond Creek and the Yarra River.	Suburban	PO1		Major Road Projects Victoria	Nillumbik Council, Manningham Council, Melb Water	in progress	Construction in progress
16	Birrarung Trial Floating Wetlands	Priority project - A trial of floating wetlands in the central Melbourne area of the river. Given the innovative nature of the floating vegetation concept, a trial will be run to assess future applications on a bigger scale.	Inner city	PO1	10	Melb City Council	DELWP	in progress	Progressing well, with plans underway for installing 3 wetlands later in 2022.
17	Yarra4Life	Environmental program in the Yarra Valley that improves, increases and protects habitat for native animals including the Helmeted Honeyeater and Leadbeater's Possum. Includes long-term goal of habitat link from the Yellingbo Nature Conservation Reserve north to Yarra Ranges National Park.	Upper rural	PO1	10, 13	Melb Water	Community & agencies	in progress	
18	Yering Gorge to Yarra Junction Integrated Catchment Management Project	Use of integrated catchment management principles to address threatening processes - working across the landscape with private and public land managers, TOs and broader community to achieve multiple benefits including biodiversity, threatened species recovery, sustainable agriculture, improved water quality and river health, and supporting TO aspirations and community empowerment.	Lower rural	PO1	10, 13	Melb Water	Community & agencies	in progress	
19	Weed control and revegetation works along the Yarra River	Enhancing a degraded section of the river between Dights Falls and Andrews Reserve, with a focus on weed control and revegetation to increase natural values and provide habitat.	Inner city	PO1	10	Melb Water	Parks Victoria	delivered	Delivered through waterways and drainage investment plan
20	Sugarloaf Adaptive Deer Management 2021-23	Intensive deer management program (eradication) to protect drinking water quality and biodiversity values at Sugarloaf Reservoir. The reservoir, which is fenced off, is within the Kinglake-Yarra biodiversity corridor.	Lower rural	PO1	20	Melb Water		in progress	Delivered through waterways and drainage investment plan

id	Activity/Project	Description	Reach	Primary PO#	YSP Action#	Lead agency	Project partners	Status	Progress
21	Melbourne Water Maintenance Program	Recurrent expenditure on maintenance of Yarra River through programmed maintenance eg weed control, debris removal, litter management.	All reaches	PO1	10	Melb Water		delivered	Delivered through waterways and drainage investment plan
22	Bolin Bolin billabong restoration	Delivering the long term watering solution at Bolin Bolin. Working on Country with Narrap team.	Suburban	PO1	6	Melb Water	WWCHAC, Parks Vic, VEWH, Manningham Council	delivered	Watering solution installed
23	Lower Yarra Landscape Approach to billabongs	Implementing the landscape scale approach to billabongs management framework for the Lower Yarra.	Suburban	PO1	7	Melb Water	WWCHAC, Parks Vic, VEWH, Manningham, Riverkeeper, Banyule	delivered	Technical report published
24	Delivering environmental water to the Yarra River	Delivering the Seasonal Watering Plan 2021-22 for the Yarra River.	All reaches	PO1	17	Melb Water	VEWH, WWCHAC	delivered	Delivered as planned
25	Monitoring the lower Yarra billabongs	Ecological monitoring program for the Lower Yarra Billabongs - vegetation, frogs and water quality. Working with Melbourne University and Narrap team.	Suburban	PO1	9	Melb Water	Melbourne University, WWCHAC	delivered	Delivered through waterways and drainage investment plan
26	Liveable Communities, Liveable Waterways Program	Funding program for projects and longer-term partnerships that provide value to Melbourne Water, our customers, partners and community by aligning with at least one of the following themes - Connected habitat and catchments, Integrated water management enablers, Science, innovation and technology, and Liveable Cities.	All reaches	PO1	13	Melb Water	Councils, Community Groups, Agencies, Private landholders	in progress	32 applications progressed to projects within YSP area
27	Upper Yarra weed management	Weed and willow control along multiple reaches of the river between Dee River and Woori Yallock Creek, and additional weed control between Don Road, Launching Place and the Warramate Hills NCR.	Upper rural	PO1	20	Melb Water		in progress	Delivered through waterways and drainage investment plan
28	Yarra Flats	Priority Project - trial watering of Annulus and Banksia Street billabongs and design of an onsite stormwater treatment wetland to supply water to the billabongs and provide improved community access.	Suburban	PO1	6	Melb Water	WWCHAC, DELWP, Parks Vic, Banyule, VEWH	in progress	Trial watering completed and permanent solution in design
29	Yarra River cleaning and maintenance - litter	Annual litter removal program.	Inner city	PO1		Parks Vic	DELWP	delivered	

id	Activity/Project	Description	Reach	Primary PO#	YSP Action#	Lead agency	Project partners	Status	Progress
30	Lower Yarra Litter Improvement	New litter management funding, litter traps, techniques, and innovations.	Inner city	PO1	2	Parks Vic	Federal, DELWP	in progress	
31	Regenerating Burnley Harbour for a Healthy Bay	Involves removing rubbish and invasive weeds, bank stabilisation and revegetation. Also incorporates a community event to provide engagement and awareness amongst local groups.	Inner city	PO1	11	DELWP	Yarra Riverkeeper	in progress	To-date completed 0.2 ha of revegetation and removed 20 kg of litter. Finish in Sep'22
32	Freshwater mussels research	Wurundjeri Woi wurrung led project to understand the distribution, ecology and threats to freshwater mussels. It forms part of the Wurundjeri Woi-wurrung Umalek Murrup Ngark Yaluk Ba Bik project with its objective of further involving Wurundjeri Woi-wurrung people in waterway research and restoration, and a long-term aim of reintroducing freshwater mussels into waterways.	Suburban	PO1	19	WWCHA C	Melb Water, Arthur Rylar Institute	in progress	
33	Birrarung Rangers	Priority Project - provides ongoing involvement of Traditional Owners in the day-to-day management of the Yarra River, Birrarung, strengthening connection to Country.	All reaches	PO1	13	WWCHA C	DELWP, Melb Water	planning	Consultation to develop scope and project plan
34	Yarra City bushland maintenance	Bushland maintenance, covers weed control in 34 bushland sites (approx. 35ha) across City of Yarra.	Inner city	PO1	10	Yarra City Council	community	delivered	program for 2021-22 completed
35	Yarra City EVC revegetation program for waterways	EVC revegetation program along waterways, aims to plant 20,000 local provenance plants in line with EVC density benchmarks.	Inner city	PO1	10	Yarra City Council	community	delivered	program for 2021-22 completed
36	Yering billabongs	Priority Project - restoration of 100 ha of floodplain to functional billabongs and wetlands. Led by Yarra Ranges Council, the project will reconnect the floodplain by creating ephemeral and semi-permanent water bodies to mimic natural habitats and provide water quality treatment for flows from Olinda Creek, Stringybark Creek and Muddy Creek, while also extending Spadoni's Reserve.	Lower rural	PO1	6	Yarra Ranges Council	DELWP, Melb Water, WWCHAC	in progress	Design work for re-engaging floodplains and billabongs completed

id	Activity/Project	Description	Reach	Primary PO#	YSP Action#	Lead agency	Project partners	Status	Progress
37	Polystyrene in the Yarra River	Priority project - assessing the relative contribution of polystyrene in the river from industries. Includes building a stronger evidence-based-understanding of litter sources, creating educational material for community and business on the extent and impact of polystyrene pollution, improving engagement with communities, and building an open-source interactive polystyrene pollution layer.	Inner city	PO1	2	Yarra Riverkeeper	DELWP	in progress	Phase 2 completed, and planning for phase 3 targeting sources and industry
38	Peri-urban deer control plan	Plan to reduce impacts to biodiversity, water, agriculture and Traditional Owner values through delivery of education, monitoring and deer control activities across the peri-urban area, including Yarra River land and catchment.	All reaches	PO1	20	DELWP	Parks Victoria, Councils, Melb Water, Traditional Owners, private landholders	in progress	Funding applications for works across the Yarra Catchment are being assessed.
39	Deliver options to support water rights for the Birrarung	Investigate the possibility of the reallocation of the former Amcor entitlement	All reaches	PO2	8	DELWP	WWCHAC	in progress	DELWP is working with Wurundjeri to develop and progress the transfer
40	Brushy Creek cultural values mapping project	Funding and in-kind officer support - towards Wurundjeri Woiwurrung Cultural Heritage Aboriginal Corporation second phase of the (Brushy Creek) cultural values mapping project	Suburban	PO2	26	WWCHAC	DELWP	in progress	Commenced in 2022, supported by DELWP
41	Heidelberg Activity Centre Structure Plan	Preparing a new Structure Plan for the Heidelberg Activity Centre	Suburban	PO3	39	Banyule Council		in progress	Preparing PS amendment to embed Structure Plan (approved by Council, Dec'21)
42	Heidelberg Park Masterplan	Developing Heidelberg Park Masterplan.	Suburban	PO3	29	Banyule Council	Melb Water, Parks Vic, VicRoads, DELWP, Warringal Conservation Society and Banyule Bicycle Users Group	in progress	Updated draft going to Council for adoption in Sep'22

id	Activity/Project	Description	Reach	Primary PO#	YSP Action#	Lead agency	Project partners	Status	Progress
43	Parks Maintenance - Mowing	Parks maintenance and mowing, including: Wilson's Reserve, Burke Rd North, The Boulevard, Warringal Parklands and Banyule Flats Reserve.	Suburban	PO3	29	Banyule Council		delivered	ongoing
44	Banksia Park Bridge	New bridge at end of Yarra Street in Heidelberg to connect across the Yarra River from Main Yarra Trail to Heide Museum of Modern Art in Bulleen.	Suburban	PO3	32	Manningham Council	Banyule Council, DELWP, Parks Vic	planning	Funding secured and bridge design being undertaken by Manningham
45	On road bicycle route on Yarra Street, Heidelberg	On-road bike path connection from proposed Yarra Street Bridge to access Heidelberg Activity Centre and Train Station	Suburban	PO3	32	Banyule Council		planning	Waiting for bridge design
46	Main Yarra Trail upgrade	1. Improve trail connection under Banksia Street. 2. Provide a new shared user path between Banksia Street and Burke Road (see Council's concept design). 3. Provide a short cut path on south side of Banyule wetlands.	Suburban	PO3	32	Banyule Council	NELP	planning	
47	Concept Design for Bike Path	Concept design for bike path between Banksia Street and Burke Road North	Suburban	PO3	32	Banyule Council		planning	
48	Disc Golf Project – Warringal Park	Investigate options for a 9-hole disc golf course at Warringal Park	Suburban	PO3		Banyule Council		delivered	Decision to not proceed with disc golf course at Warringal Parklands
49	Hawthorn Rowing Ramp	Refurbishment of the Hawthorn rowing ramp adjacent Hawthorn Rowing Club	Inner city	PO3	32	Boroondara Council		in progress	Contractor: Walcon. Pontoon manufactured off site. Installation Aug
50	Freeway Golf Course Plan	Planning for the future of Freeway Golf Course.	Suburban	PO3		Boroondara Council	NEL	delivered	Planning completed. Decision made to proceed with course reconfiguration
51	Willsmere Park Pavilion design	Pavilion design (for future redevelopment).	Suburban	PO3		Boroondara Council		in progress	Architects engaged and under design. Construction 2023/24
52	Hays Paddock	Design for renewal of playground, and upgrade and extension of path network	Suburban	PO4		Boroondara Council		in progress	Detailed design underway. Construction 2023/24
53	Fairview Park and Wallen Reserve	Install solar lighting along pathway	Inner city	PO3		Boroondara Council		delivered	Project cancelled in response to community feedback

id	Activity/Project	Description	Reach	Primary PO#	YSP Action#	Lead agency	Project partners	Status	Progress
54	Walmer St bridge	Renewal of the Boroondara section of the Walmer St bridge	Inner city	PO3	32	Boroondara Council		planning	Works scheduled to commence in August 2022
55	Acquisition of public land	Five land parcels purchased for inclusion in the Yarra Valley Parklands, as part of the proactive acquisition program with a Public Acquisition Overlay (PAO).	Suburban	PO3	33	DELWP	Parks Vic, Councils	in progress	In addition to land acquisitions, developed Acquisition Strategies for the parklands in the program
56	Open Space for Everyone 2021 - activities relevant to YSP	1) preparing metropolitan wide open space investment plan to guide 30-year investment priorities 2) investigating new governance models for managing public open space, including involvement of Traditional Owners more effectively 3) reviewing Design Guidelines for public open space to engage a broader cross section of the community 4) investigating shared use of public land agreements to optimise use of existing open space.	All reaches	PO3		DELWP	State and local government agencies and Traditional Owners	in progress	1) 30-year investment framework well progressed with DELWP working with 32 Councils, state departments/agencies and Wurundjeri and Bunurong Land Councils to capture open space investment opportunities across metro 2) Draft Integrated Place Management Framework report prepared to consider governance models to activate waterways land - co designed and funded by MW/DELWP
57	Land and asset issues management – suburban and inner city reach	Includes clarifying an ongoing asset manager for Fairfield pipe bridge and for public reserve abutting the Alphington Paper Mill development; and managing potential implications for adjacent public land associated with re-development works at the Collingwood Children's Farm.	Suburban	PO3		DELWP	Yarra Valley Water, Parks Vic, Yarra Council, Collingwood Children's Farm	planning	
58	Main Yarra Trail - Gipps St steps	Replace with all abilities access and improve bike access	Inner city	PO3	32	Parks Vic	Yarra Council, DELWP	in progress	Acquisition of land is at settlement stage, expected by Aug'22. Construction anticipated to commence by early 2023.

id	Activity/Project	Description	Reach	Primary PO#	YSP Action#	Lead agency	Project partners	Status	Progress
60	Upper Yarra Reservoir Park Revitalisation	Creating a variety of active and passive play areas for local residents and visitors to this popular camping spot.	Upper rural	PO3	32	DELWP	Yarra Ranges Council, Parks Vic	delivered	Community event to celebrate park upgrade scheduled for Aug'22
61	Alphington Park – new playspace	The new playground will expand the age range that the playspace is suitable for.	Suburban	PO3	32	DELWP	Yarra Council	in progress	Final design approved and contractor appointed. Works to commence Aug'22 and completion by Dec'22
62	Shared Trail at Launching Place	South bank of Yarra at Launching Place, links to Warburton Rail Trail. Two phase construction. Community consultation on phase 1 delayed by COVID 19	Upper rural	PO3	32	DELWP	Yarra Ranges Council, Parks Vic, Melb Water	planning	YRC section not budgeted for. MW is lead agency on broader trail
63	wonguim wilam	Upgrade of park precinct at Warrandyte River Reserve with an all abilities park, picnic facilities and landscaping.	Suburban	PO3	32	Manningham Council	Lions Club, VicRoads, DELWP	in progress	Official opening planned for Sep'22
64	Main Yarra Trail Extension to Warrandyte	Extending the shared trail network between the Mullum Mullum trail and Taroona Avenue, Warrandyte, to improve recreational opportunities (ie walking, cycling and jogging).	Suburban	PO3	32	Manningham Council		in progress	This year has focussed on the design phase of Stages 1 and 4, with construction anticipated to start in late 2022
65	North East Link related projects	Planning for recreational facilities and improved pedestrian and cycling opportunities as a result of the North East Link project	Suburban	PO3	32	NELP / Manningham Council	DELWP	in progress	Construction commenced for Bulleen Park and Ride. Planning scheme amendment for Templestowe Road soccer facility (C132mann) approved
66	Enterprize Park upgrade	Enterprize Park, located on the north bank, between the Aquarium and Queens Bridge is being upgraded with lawn areas expanded by approximately 1,000 m ² , and views and physical connectivity between park and river strengthened.	Inner city	PO3	35	Melb City Council	Traditional Owners	delivered	Works to upgrade the landscape at Enterprize Park are complete.
67	Southbank Promenade upgrade	Revitalising section of Southbank Promenade between Princes Bridge and Evan Walker Bridge, addressing a number of amenity and safety issues. This project will inform future stages of works along the promenade.	Inner city	PO3		Melb City Council		in progress	Early works package began in April 2022 and is expected to be completed by the end of 2022

id	Activity/Project	Description	Reach	Primary PO#	YSP Action#	Lead agency	Project partners	Status	Progress
68	Southbank Boulevard - public space revitalisation	Transformation will add 2.5ha of public spaces and neighbourhood parks in Southbank, Melbourne's most densely populated suburb. Completed sections include the roadway, super tram stop and Arts Gateway open space. Works are underway on the Civic Space located in front of the ABC Southbank Centre.	Inner city	PO3		Melb City Council		in progress	Roadway, civic space and neighbourhood parks complete, construction now focused on play space.
69	The Greenline Project: Revitalising the north bank of the Yarra River – Birrarung	The Greenline Project is a transformational project that will present a new vision for the north bank of the Yarra River - Birrarung. It will see the development of five precincts covering 4 km between Birrarung Marr and the Bolte Bridge.	Inner city	PO3	32	Melb City Council		planning	Implementation plan published; design work is progressing; and federal government pledged \$20 million
70	Seafarers Rest Park	New public park located on north bank between The Mission to Seafarers heritage building and the Seafarers Bridge, will increase pedestrian and bicycle access, retain and enhance existing trees, and protect neighbouring heritage sites.	Inner city	PO3	32	Melb City Council		planning	Final design endorsed in 2021, with construction scheduled to commence in 2023
71	Launching Place Kayak Launch	Install a kayak launch on the Yarra River at Launching Place, immediately upstream of the Don Road bridge.	Upper rural	PO3	32	Melb Water	Yarra Ranges Council	delivered	
72	Herring Island	Recurrent expenditure on the management of Herring Island.	Inner city	PO3	11	Parks Vic		delivered	
73	Yarra Bend Park	Recurrent expenditure on the management of Yarra Bend Park.	Suburban	PO3	32	Parks Vic		delivered	
74	Warrandyte State Park	Recurrent expenditure on the management of Warrandyte State Park.	Suburban	PO3	32	Parks Vic		delivered	
75	Sugarloaf Reservoir Park	Recurrent expenditure on the management of Sugarloaf Reservoir Park.	Lower rural	PO3	32	Parks Vic		delivered	
76	Yarra Ranges National Park	Recurrent expenditure on management of Yarra Ranges NP.	Upper rural	PO3	32	Parks Vic		delivered	
77	Yarra Valley Parklands	Recurrent expenditure on management of Yarra Valley Parklands - includes Bolin Bolin, Banyule Flats, Banksia Park, Yarra Flats, Viewbank Park, Birrarung Park, Westerfolds Park, Candlebark Park, Tikalara Park, Sweeney Flat, Laughing Waters Park, Pound Bend and Longridge.	Suburban	PO3	32	Parks Vic		delivered	
78	Fairlea Reserve Netball Courts and Pavilions Project	Construction of netball courts and pavilions - includes landscaping, bike racks, pedestrian pathways and increased car parking capacity.	Suburban	PO3	32	Parks Vic	Sport and Recreation Victoria,	in progress	Works are underway to construct the stadium and

id	Activity/Project	Description	Reach	Primary PO#	YSP Action#	Lead agency	Project partners	Status	Progress
							Netball Victoria, Yarra City Council		netball courts. Expect completion by Nov'22
79	Yarra River Management	Recurrent expenditure on the management of Yarra River.	Inner city	PO3	32	Parks Vic		delivered	
80	Haining Farm Development	Recurrent expenditure on the management of Haining Farm.	Upper rural	PO3	32	Parks Vic		delivered	
81	Thomas Oval Dog Park, South Yarra	Provide a dog-friendly park on underutilised land at Thomas Oval (Williams Road and Alexandra Avenue, South Yarra) - funding under the Government's Local Parks (dog parks) Program	Inner city	PO3	32	Stonning ton Council	DELWP	in progress	Construction commenced Apr'22 and is due to be completed by Nov'22
82	Lower Yarra River Maintenance Dredging Program	Dredging program to ensure access and egress for vessels to priority berthing sites along the inner city reach, as part of program to improve Lower Yarra River amenity and functionality.	Inner city	PO3	37	Parks Vic		in progress	Current campaign started Mar'22 and has been extended until end of Oct'22
83	Warburton Recreation Reserve Master Plan	Developing master plan to upgrade sports pavilion and refurbish the Lilydale to Warburton Rail Trail historic turntable.	Upper rural	PO3	32	Yarra Ranges Council		in progress	
84	Yarra Valley Trail (Stage 1B)	This stage will feature new bridges to replace the heritage bridges that were destroyed in the 2009 Black Saturday fires as well as a new bridge over the Yarra River.	Lower rural	PO3	32	Yarra Ranges Council	DELWP, Transport, VicTrack, Yarra Valley Railways, Rail Trails Australia	planning	Project at VCAT. Aiming for construction early 2023
85	Millgrove River Walk	The proposed walking track will provide a safe walking course for recreational and education purposes on the Yarra River bank and a widening of River Road.	Upper rural	PO3	32	Yarra Ranges Council	Dept of Premier and Cabinet	planning	Awarded and construction to commence Sept 2022
86	Planning scheme amendment for Yarra Strategic Plan	Planning scheme amendment to give further statutory effect to the land use framework plan in Part 2 of the Plan	All reaches	PO4	39	DELWP	Local councils	in progress	Planning scheme amendment to give effect to land use framework has been drafted, and will be considered by the Minister for Planning in due course
87	Yarra River land declarations	Yarra River land updated in September 2021, adding five new parcels and removing parcels gazetted in error. Preliminary	All reaches	PO4	39	DELWP	Parks Victoria	in progress	Sep'21, added five new parcels and removed

id	Activity/Project	Description	Reach	Primary PO#	YSP Action#	Lead agency	Project partners	Status	Progress
		work on Yarra River land declarations for the inner city reach in progress.							parcels gazetted in error. Preliminary work on declarations for inner city reach in progress.
88	Final Yarra River – Bulleen Precinct Land Use Framework Plan	Finalisation of land use framework that provides greater detail and direction for land use and development in this reach of the Yarra River – Birrarung	Suburban	PO4	39	DELWP	WWCHAC, Transport (MTIA), Parks Vic	in progress	Plan is being finalised for release by the Victorian Government in 2022
89	Updated coastal hazard overlay content in planning schemes	Amendment VC171 (gazetted 6 September 2021) implemented the state Marine and Coastal Policy 2020 and updated coastal hazard overlay content in planning schemes.	Inner city	PO4	39	DELWP	Melb Water	delivered	Gazetted 6 September 2021

© Copyright September 2022 Melbourne Water Corporation All rights reserved.

Disclaimer: This publication may be of assistance to you, but Melbourne Water and its employees do not guarantee that the publication is without flaw of any kind or is wholly appropriate for your particular purposes and therefore disclaims all liability or any error, loss or other consequence which may arise from you relying on any information in this publication.



<https://www.melbournewater.com.au/about/strategies-and-reports/yarra-strategic-plan-burndap-birrarung-burndap-umarkoo>