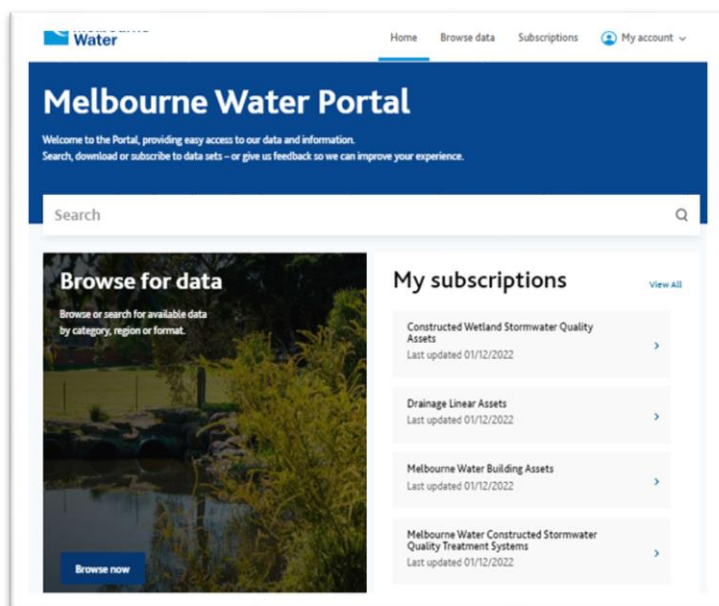


Accessing Melbourne Water GIS Data on the Portal

1. Log in to the Melbourne Water Portal: www.melbournewater.com.au/portal/user/login

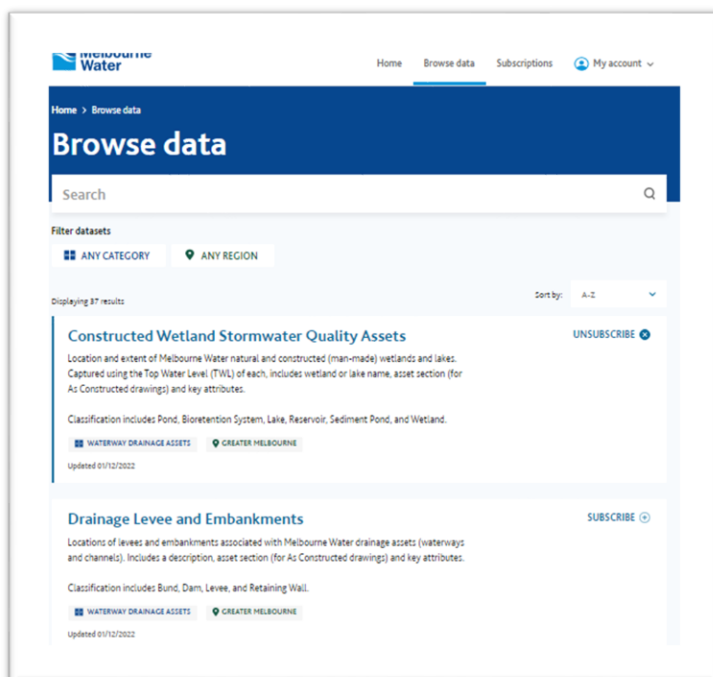
2. Home page:



From the Home page, you can search for data in 3 different ways:

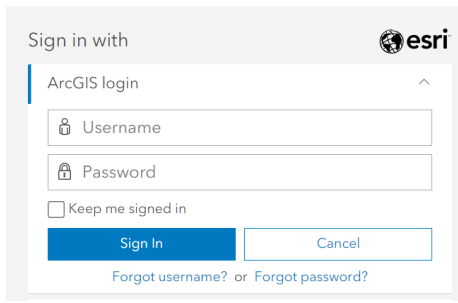
1. Browse data tab at the top of the Home page,
2. Browse now button, or
3. Search bar at the top of the Home page.

3. Browse data page:



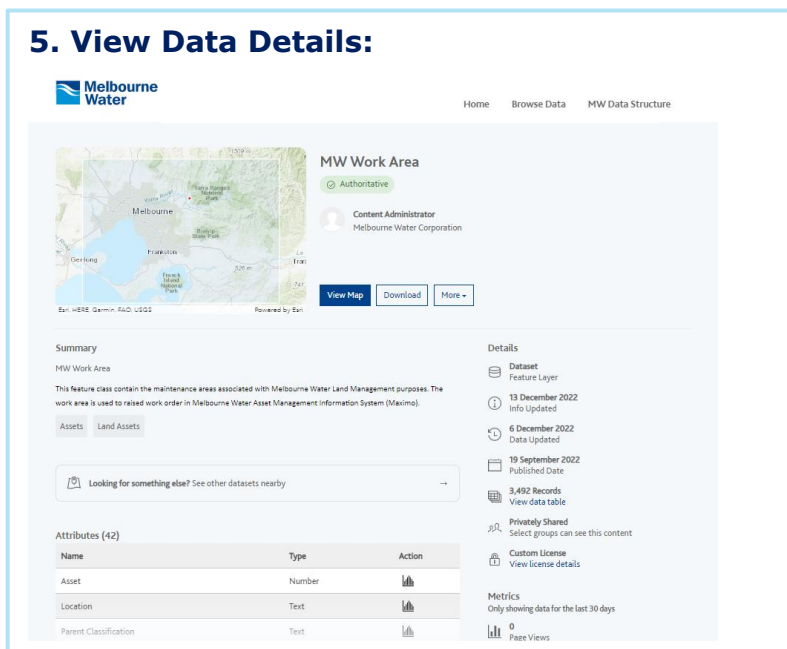
- When you click on the Browse data tab or the Browse now button on the Home page, you will go to the Browse data page.
- To locate the data set you need:
 - Scroll through the alphabetical list, or
 - Enter the name of the data set in the search bar.
- Once you find the data set you need, click on it to go to the Data Details page.

4. Log in to the Melbourne Water ArcGIS HUB:



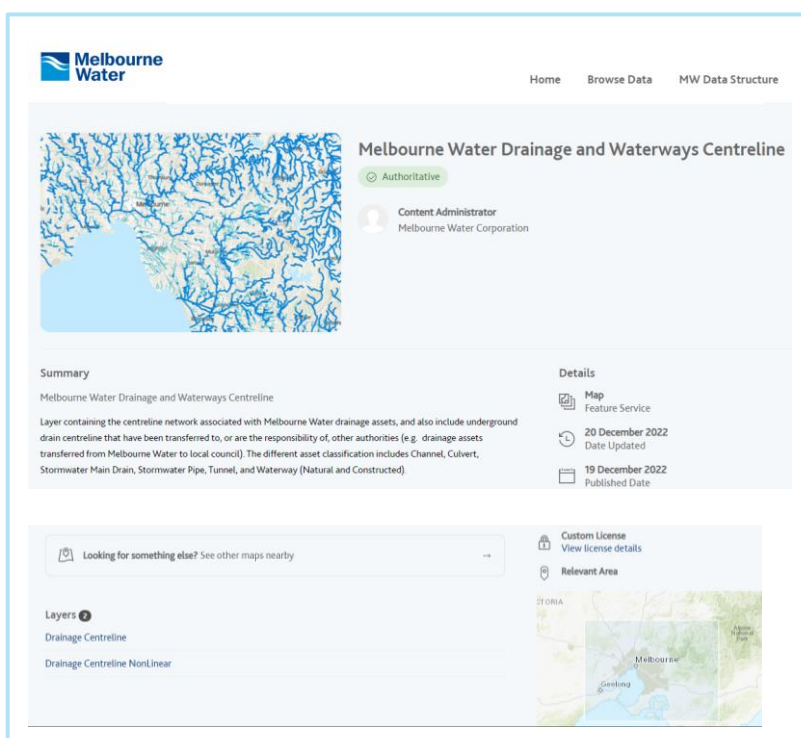
- You will need to enter your Esri Hub account details to view the data details for your selected data set.

5. View Data Details:



Data with Single Layer:

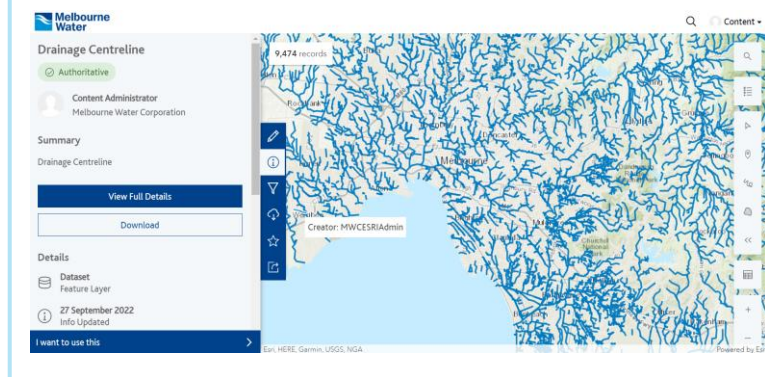
- The details page provides descriptive information of the selected data like published date, license information etc.
- Click on the view map button to view the data in a full web application.
- Click on the download button to download the full datasets.



Data with Multi Layers:

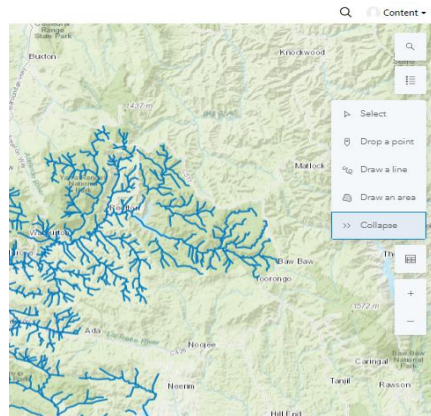
- If the view map, download, and more button is not available, this means that the data has multi layers.
- Scroll down the page to the Layers section.
- Click on the layer to go the item page and then download the full datasets.

6. View Data:

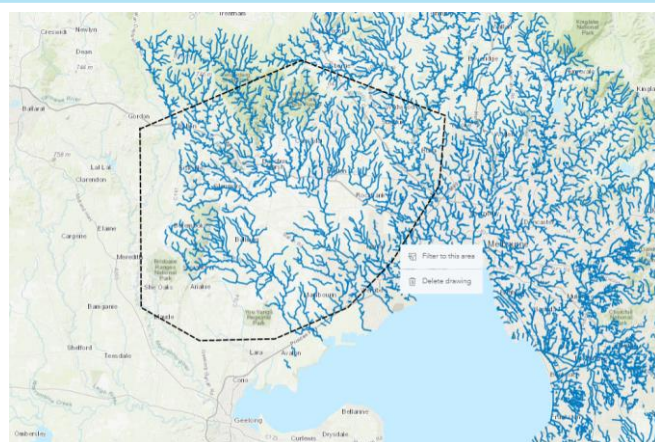


- The selected data is opened with the configured web application to display the data spatially.
- You have options to further navigate (like pan, zoom etc.) to view and analyze the data prior to filtering and downloading the data.

7. Filter Data:



- The displayed data can be filtered as required using multiple options as displayed, such as, dropping a point, drawing a line/polygon etc.



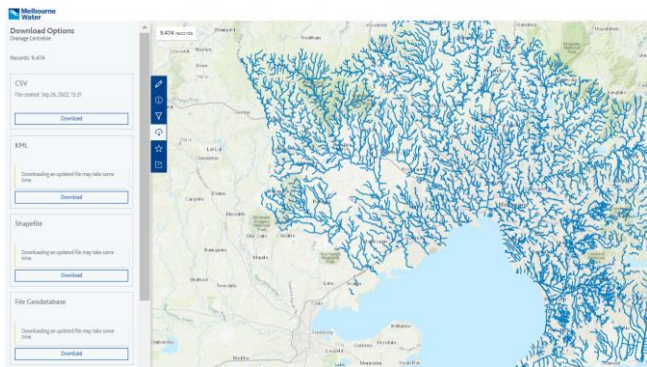
- The filtered data can also be extended using a buffer function, (where the user can define their own custom buffer value).

8. Clipped Data (Filtered):



- The display data is then restricted to the filtered data area only and can be downloaded using the preferred download format as shown below.

9. Download Data:



From the map view, you can search for data in the following ways:

- Click on the download widget icon to open the download options.
- Click on the required format to download the data.
- You can also navigate to the data details page for metadata and download options.