

# Why are we moving to a circular economy with our sewerage system?



## What is the circular economy?

In a circular economy, people minimise waste and make the most of resources. It allows us to avoid waste by using good design and effective recovery of materials that can be reused.

Governments and businesses around the world are shifting to these principles because it reduces the environmental impacts of production, while increasing the value of the resources that are used to create these goods and services.

Melbourne's water sector is working with the community and regulators on a strategy to transform Melbourne's sewerage system from a one-way system of waste collection-treatment-discharge, to a system of circular resource recovery and re-use.

This transformation will ensure our city is future-ready and resilient.

## What is resource recovery and how will it help the sewerage system?

We're transforming our sewerage system into a *resource recovery* system so we can recycle the resources generated from the treatment process.

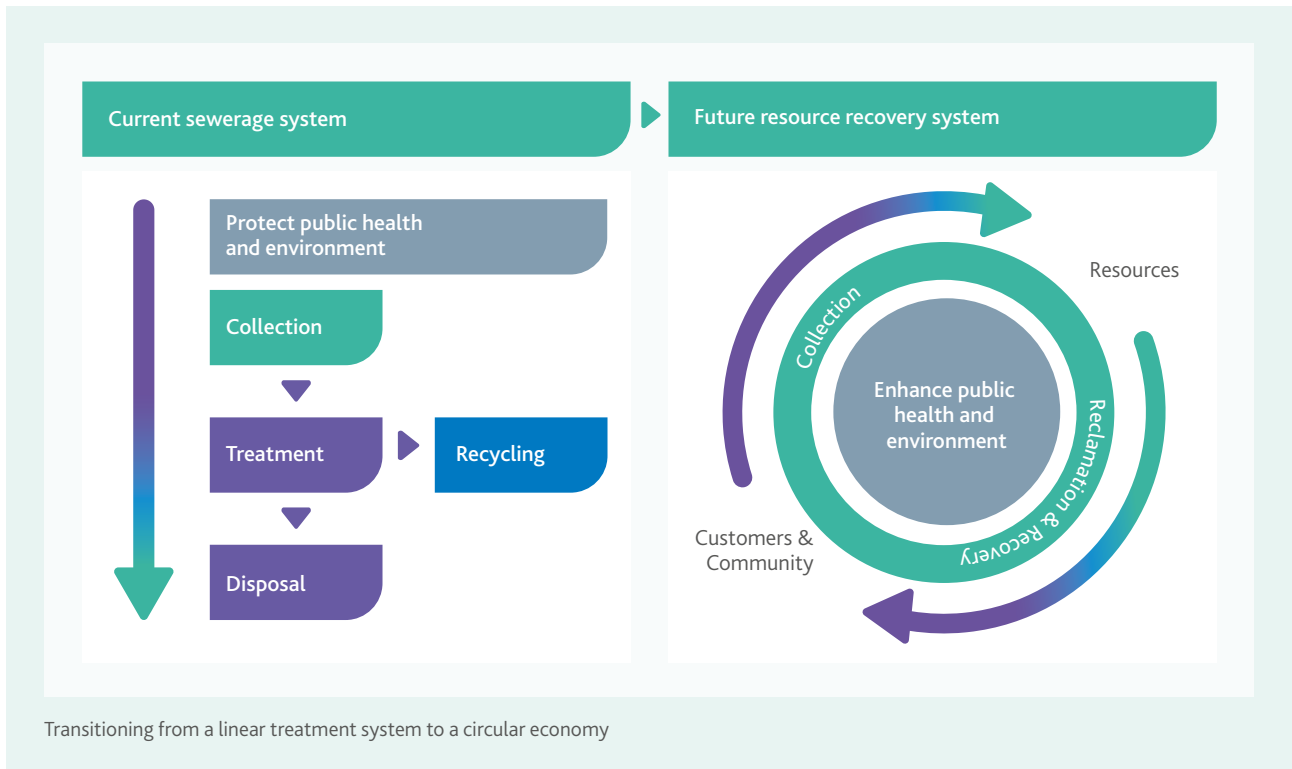
This includes:

- Capturing biogas to reduce our reliance on grid electricity and minimise costs
- Reusing biosolids to improve and condition local agricultural farms and businesses
- Using recycled water for irrigation to reduce pressure on drinking water supplies.

This helps us reduce the sewerage system's impact on the environment, while ensuring the system remains safe, reliable and affordable.

It also makes Melbourne a more water efficient city that can draw on diverse water sources that will help build a resilient community, and create jobs and new industries.





### Transforming technologies and mindsets

We’re pursuing emerging opportunities for resource recovery and using renewable energy, which is so important as we prepare for a future with reduced access to natural resources.

Technological innovations will develop over time and have the potential to drive new industries and enterprises to benefit all Melburnians, but they need to be supported by industry, the community, and new governance arrangements.

Transforming our sewerage system into a resource recovery system isn’t just about building new infrastructure – it’s about a commitment to change at all levels, from technology through to mindsets. A transformation approach will help us embrace uncertainty through innovation.



### Realising a resilient city

A circular resource recovery system will protect and enhance Melbourne’s treasured liveability, so that we as a community can access safe, affordable sanitation and continue to enjoy life in our beautiful city with its cherished green spaces, parklands, rivers, bays and creeks.



For further information visit [Melbourne Sewerage Strategy](#) | [Melbourne Water](#)