

Phase 2 Engagement Report Moonee Ponds Creek

SURVEY ENGAGEMENT AND COLLABORATION



Local community information sessions

approximately
140
people attended the information sessions




Engagement with local sports clubs **3**

1 school engagement session



PHASE 2 SURVEY COMMUNITY RESPONSE



314
SURVEY RESPONSES IN PHASE 2

527
CONTRIBUTIONS OVERALL DURING PHASE ONE AND TWO

8,820
OVERALL

YOURSAY VIEWS

RESULTS BY DEMOGRAPHIC



AGED 0-9	0.6%
AGED 10-19	1.6%
AGED 20-29	8.0%
AGED 30-39	26.4%
AGED 40-49	25.8%
AGED 50-59	18.5%
AGED 60-69	13.1%
AGED 70-79	4.5%
PREFER NOT TO SAY	1.6%

Which plant or animal would you like to see return to the Moonee Ponds Creek word cloud?



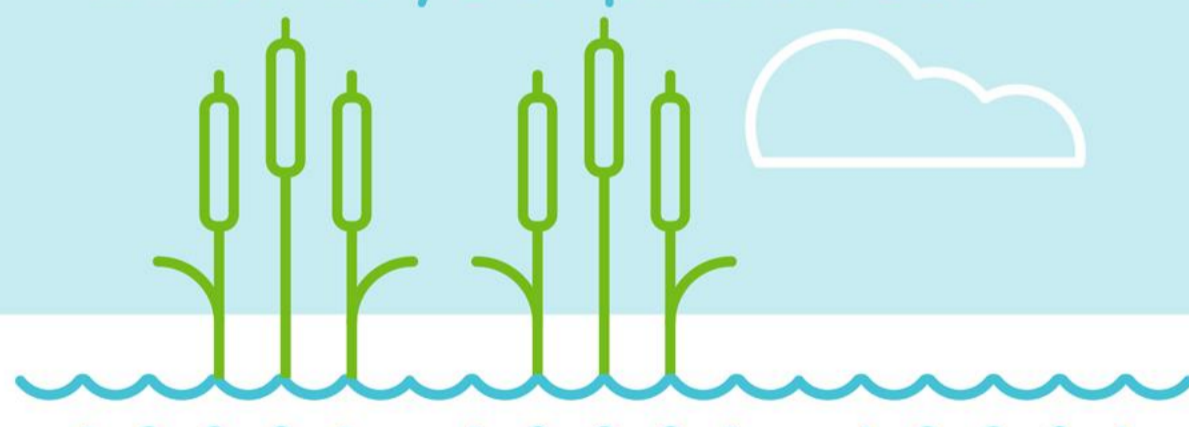
Open space results
What are your preferred options (treatments) for the three open space areas?



✓ BIODIVERSITY ZONE	256
✓ QUIET REFLECTIVE SPACE	226
✓ CULTURAL SPACE	185
EDUCATIONAL SPACE	115
PICNIC SPACE	100
EXERCISE SPACE	60



Design concept votes
Of the three design concepts which is your preferred?



Most important aspects of Design Concept C (ranked)

The ranking of each concept design was calculated by the sum of the weight of each ranked position, multiplied by the response count for the position choice then divided by the total contributions.

✓ Installation of pond at Oak Park Reserve	3.46
✓ Opportunity to interact with the waterway	3.31
✓ Separation of shared path along Brosnan Crescent	3.0
Upgrade of walkways around Oak Park	2.78
Daylighting of Oak Park stormwater drain	2.46

31% ranked the installation of the pond at Oak Park Reserve as the most important aspect of Design Concept C

“ I think this design offers the best connectivity for the community and has the opportunity to make Oak Park Reserve and the creek a real destination. ”

“ Separating the bike and pedestrian paths, installation of pond and I like the idea of the vantage point at Ethel reserve. ”

“ Better natural outcomes over a shorter section, allowing future high quality natural outcomes. ”

“ The different concepts all naturalise a significant length of the creek, but I'm not fussed about the exact length. I'm most excited by the idea of a pond and the daylighting of the Oak Park drain. ”

“ It is really important for people to be able to engage with the water and to understand that they can influence how the creek behaves by how they manage their water use and their litter etc. ”

“ A pond and weirs are important for slowing down water flow and making the creek more natural. ”