

# Holden Reservoir Inlet Pipeline Project

## Changed traffic conditions Gourlay Road/The Parks intersection, Hillside

### About the project

The new Holden Reservoir Inlet Pipeline will be approximately three kilometres long and will travel underground along the median strip of Melton Highway, westbound from Antionetta Way, Hillside across to the north side at Sanctuary Road. This project is the first phase of a three-part overarching project which will supply high-quality drinking water to Melbourne's growing outer west.

### What work is happening at the intersection?

Construction work for Holden Reservoir Inlet Pipeline is continuing city bound.

Recently, there was a temporary closure of the right-hand turn from the Melton Highway onto Gourlay Road.

Our works are now going to impact the intersection as we dig trenches and lay piping. This will connect the pipeline on either side of the intersection.

### How will this impact you?

The intersection of Gourlay Road/The Parks will be partially closed from the 6 April until mid-May 2020.

#### Motorists

As the intersection will be closed, there will be no access across Melton Highway (see map).

There will be no right turn from Melton Highway onto Gourlay Road or The Parks.

See the map below for details on closures and detours.

#### Pedestrians

Pedestrian access will remain open and detours will be in place as the works progress. Please follow signs to ensure you cross safely.

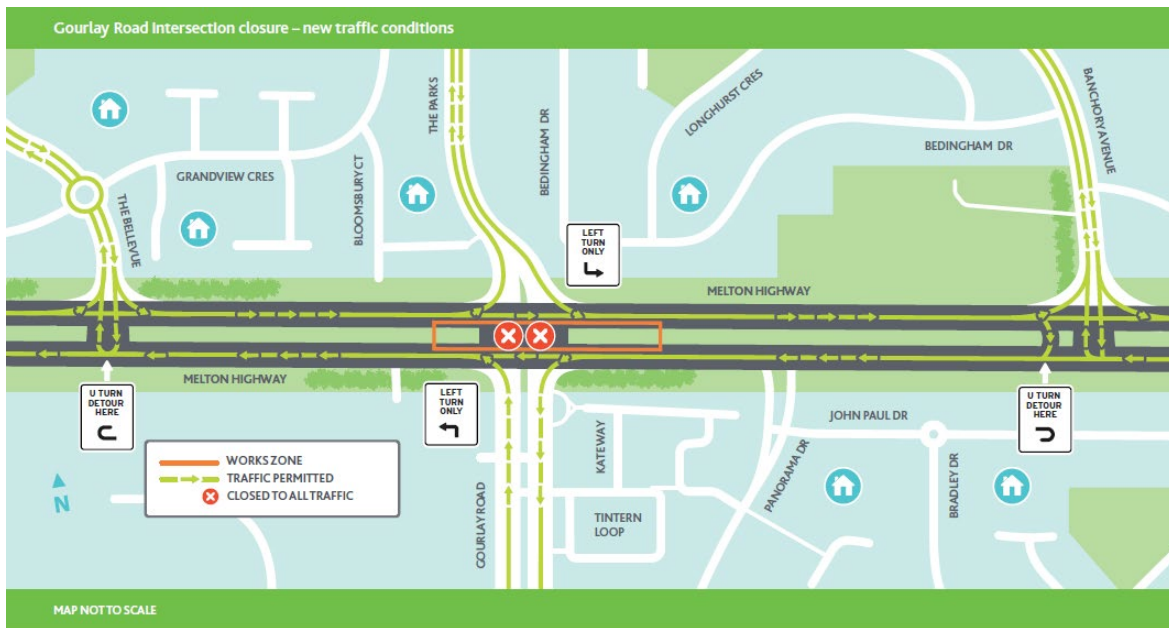
#### Residents and businesses

Properties close to the intersection may experience construction noise and dust from the work site. We will be monitoring this.

### When will this be happening?

- The intersection will be closed from mid-March 2020 for up to five weeks.
- Works will be completed and the entire intersection will reopen in May.

- Work hours will be between 7am to 5pm, Monday to Friday. If weekend or night works are required, we will alert residents who are in close proximity to the work site.



## Suggested detours

For the safety of motorists, pedestrians and our construction workers:

- Follow all signage, including detour signs along Melton Highway.
- Motorists are advised to use U-turns further along Melton Highway to reach Gourlay Road or The Parks during right hand turn closures.
- Follow alerts and instructions on electronic boards at key locations around Gourlay Road.
- Plan your trip in advance, seek alternative routes, and allow extra time to avoid delays.

Melbourne Water apologies for any inconveniences caused during construction of these essential works.

### Keep up to date with what's happening

For more information about this project or our other activities please call the Holden Reservoir Pipeline team on **1800 931 140** or email [holdenreservoirpipeline@melbournewater.com.au](mailto:holdenreservoirpipeline@melbournewater.com.au) or visit [www.melbournewater.com.au](http://www.melbournewater.com.au)



Interpreter

For an interpreter, please call the Translating and Interpreting Service (TIS National) on 13 14 50



**Like us**

[facebook.com/melbournewater](https://facebook.com/melbournewater)



**Follow us**

@MelbourneWater



**Visit us**

[www.melbournewater.com.au](http://www.melbournewater.com.au)