



Melway Ref: 343 D5

Author: Rebekah Campbell

Scale @ A1 1:5000

**DSCM Legend**

- DSS Boundary
- DS Strategy Boundary
- DSCM Property
- Stage (Allocated)
- Stage (Works in Progress)
- Stage (Finalised)
- Nodes
- Bio-Retention Swale
- Channel
- Cleanout works
- Culvert
- Grassed Swale
- Low flow pipe with Channel
- Overland flow path
- Pipeline
- Soft Engineering
- Bio-Retention Basin
- Buffer Strip
- Inlet/Outlet Structure
- Junction Pit
- Litter trap
- Retarding Basin
- Sediment trap
- Wetland

**As Constructed Legend**

- Channel
- Natural Waterway
- Sewer Main
- Underground Drain
- Water Main
- Flood Extents
- Lake
- Retarding Basin
- Sediment Trap
- Wetland

**Plan Date: April 2017**

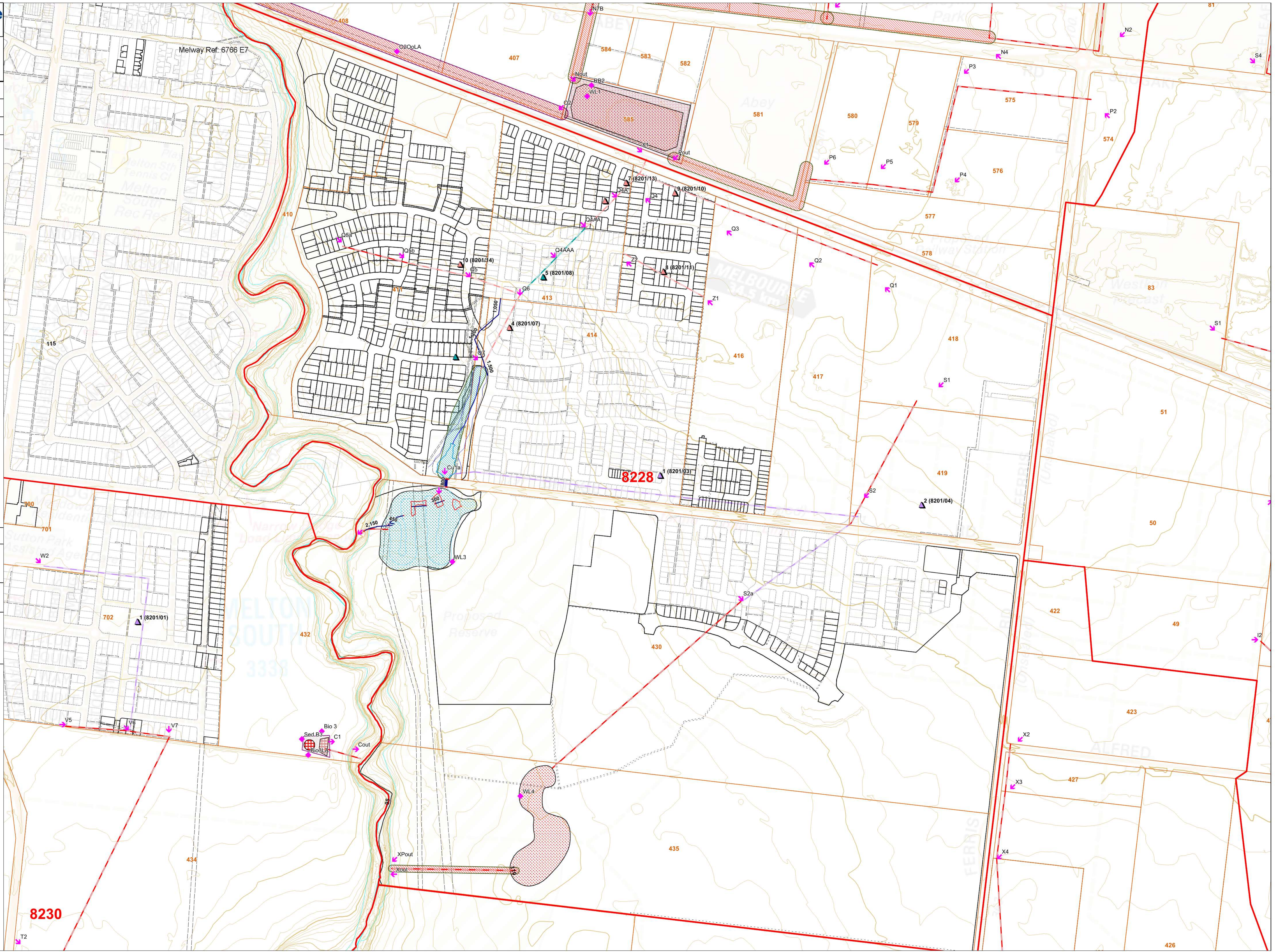
Melway Water has been taken in collecting, validating and providing the attached data. Melbourne Water Corporation makes no representation or guarantee as to the accuracy or completeness of this data. Any person or group that uses this data does so at its own risk and should make their own assessment and investigations as to the validity, accuracy and completeness of the data. Melbourne Water Corporation shall not be liable in any way to any person or group for any loss, including damages, costs, interest, loss of profits or expenses or other losses or damages, arising from the use, error, inaccuracy, incompleteness or other defect in this data.

**Copyright Melway Publishing 2010**  
 Reproduced from Melway Edition 37 with permission.

Melbourne Water is providing our indicative assets information and it not to be used as the basis of future design and expects that the reported engineering consultant will perform their own calculations as part of requirements for their development.

Please note that as schemes develop and Melbourne Water receives additional information, the corresponding advice available herein provided as part of the feasibility request may become out of date. Under the due process of the responsibility of the consultant to ensure that Melbourne Water's feasibility advice is current and to certify that all information already provided to Melbourne Water for acceptance is correct having completed their own detailed calculation.

**8228 - Ferris Road DSS Infrastructure 1/1**



8230

426